



FORUM Pipe Handling Equipment

General Catalog · Handling Tools
11.2017

Brochure Contents

1250 – 1750 TON EQUIPMENT.....	04
LINKS / BAILS.....	06
BECKETS.....	11
ELEVATORS.....	12
TUBING SPIDERS.....	28
CONTROL PANELS.....	29
ELEVATORS / SPIDERS.....	30
FLUSH MOUNTED SLIPS.....	40
POWER SLIP ELEVATOR.....	41
POWER SLIPS.....	42
LOAD RATED MASTER BUSHING.....	49
SLIP LIFTERS.....	50
XPLS SYSTEM.....	52
BACKSAVERS.....	54
MANUAL SLIPS.....	56
SAFETY CLAMPS.....	62
MASTER BUSHINGS & RT-ADAPTERS.....	66
CASING BUSHINGS.....	68
HINGED CASING SPIDERS.....	69
ROTATING MOUSEHOLES.....	70
PIPE SPINNERS.....	72
MANUAL TONGS.....	73
STABBING GUIDES.....	82
CASING SCRAPERS.....	83
BORE CODES.....	84
SERVICE & REPAIR.....	86

GENERAL INFORMATION:

The manufacturing and assembly facilities of FORUM are located in the port of Hamburg, Germany and in Broussard, Louisiana, USA.

www.f-e-t.com

www.blohmvooss-oiltools.com

APPLICABLE STANDARDS AND APPROVALS:

MANUFACTURING/QUALITY/ SAFETY STANDARDS:

API-8C, API-7K, API-Q1, CE, Atex, GOST / DECLARATION, TR/RT NORSOK

TYPE APPROVAL CLASSIFICATION SOCIETIES:

ABS, DNV-GL, LR

TESTING CAPABILITIES:

ELEVATOR LOAD TEST UNITS up to 4000 ton

TORQUE TESTING UNIT up to 250 000 ft/lbs

ELEVATOR LINK PULL TEST UNIT up to 1020 ton/set, max. 720" (60 ft)

SLIP TEST UNIT up to 3200 ton

ALL LOAD CAPACITIES IN SHORT TON (TON) UNLESS STATED OTHERWISE

FORUM has been a leading manufacturer of Pipe Handling Equipment for the Oil and Gas Industry for over 45 years. In 2013 we combined the legacy product lines of AOT (est. 1984) and B+V (est. 1972).

Today FORUM offers an extensive, innovative portfolio of Handling Tools up to 1750 ton load capacity, which meets and exceeds the on- and offshore market requirements worldwide.

FORUM offers:

- Hydraulic, pneumatic and manual Elevators up to 1500 ton
- Elevator / Spiders up to 1000 ton
- Elevator Links up to 720" length and up to 1750 ton capacity
- Power Slips from 350 up to 1500 ton
- Bushing Type Elevators which allow the user to utilize one Elevator frame for various pipe sizes
- Wrench & Spinner Combination
- Drill Pipe Spinners
- Casing Bushings & Hinged Casing Spiders
- Manual Tongs up to 160 000 ft/lbs
- Manual Slips
- Safety Clamps
- Master Bushings
- Load Rated Master Bushing
- Slip Lifter / BackSaver

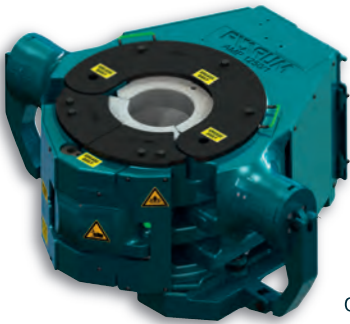
Our products are designed and manufactured in Broussard, LA, USA and Hamburg, Germany in accordance with the latest standards of the American Petroleum Institute.

Customer satisfaction is the highest priority of our dedicated professionals. Our vision is to be your preferred partner for innovative Pipe Handling Solutions.



Topdrive with B+V Links and Elevator
© Bentec GmbH Drilling & Oilfield Systems

FORUM provides innovative handling tool solutions for ultra deepwater operations up to 1750 ton.



AMP-1250

The **Automated Multi Pipe Elevator 1250**

(AMP-1250) has been developed to enhance rig safety and efficiency while

handling heavy tubular or riser running tools, between 5.1/2" – 9.7/8" up to 1500 ton.



PS-1250

The **Power Slip 1250**

(PS-1250) has been developed to handle heavy casing and landing strings between 3.1/2" – 14", up to 1250 ton string weight.



SBE-1250

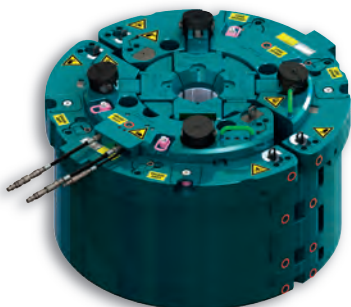
The **Solid Body**

Elevator (SBE) is designed for handling riser running tools with either fixed or detachable couplings. A solid forged design with highest strength material allows loads up to 1250 ton.

Elevator Links connect Top Drive and Elevator to lift and hold heavy tubulars. FORUM's links are forged from one single piece of high grade steel, to reach a max strength. FORUM offers lengths between 48" & 720" and up to 1750 ton capacity.



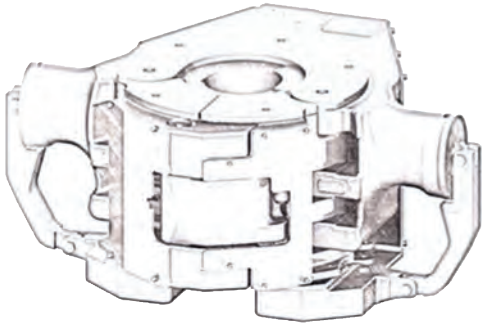
ELEVATOR LINKS



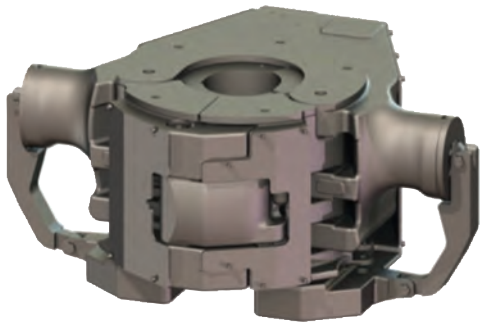
LRMB-1250

The **Load Rated Master Bushing 1250** (LRMB-1250) is specially designed for drilling operations and can hold long and heavy tubulars with a weight up to 1250 ton and a range of 2.3/8" to 13.3/8" while installed in a 49.1/2" rotary table.

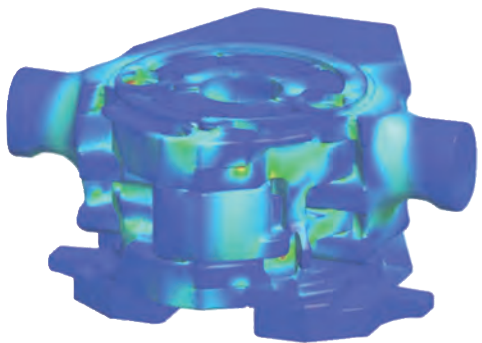
FORUM is continuously developing new equipment in order to meet the fast growing and changing demand of the Oil & Gas Industry by using the latest 3D CAD and FEM design technologies.



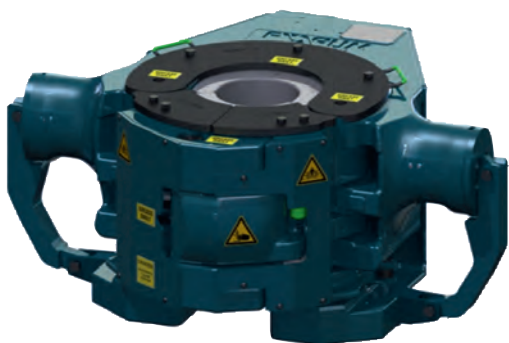
- 1 Concept Phase**
- Market and Competitive Assessment
 - Customer input
 - Setting of performance parameters
 - Determining of dimensions, pipe range, interface and features



- 2 3D Modeling with CAD**
- HSE Assessment
 - Manufacturing Assessment



- 3 FEM testing**
- Finalizing functional design
 - Weight optimization



- 4 Prototyping**
- Determining production methods
 - Field testing
 - Product optimization

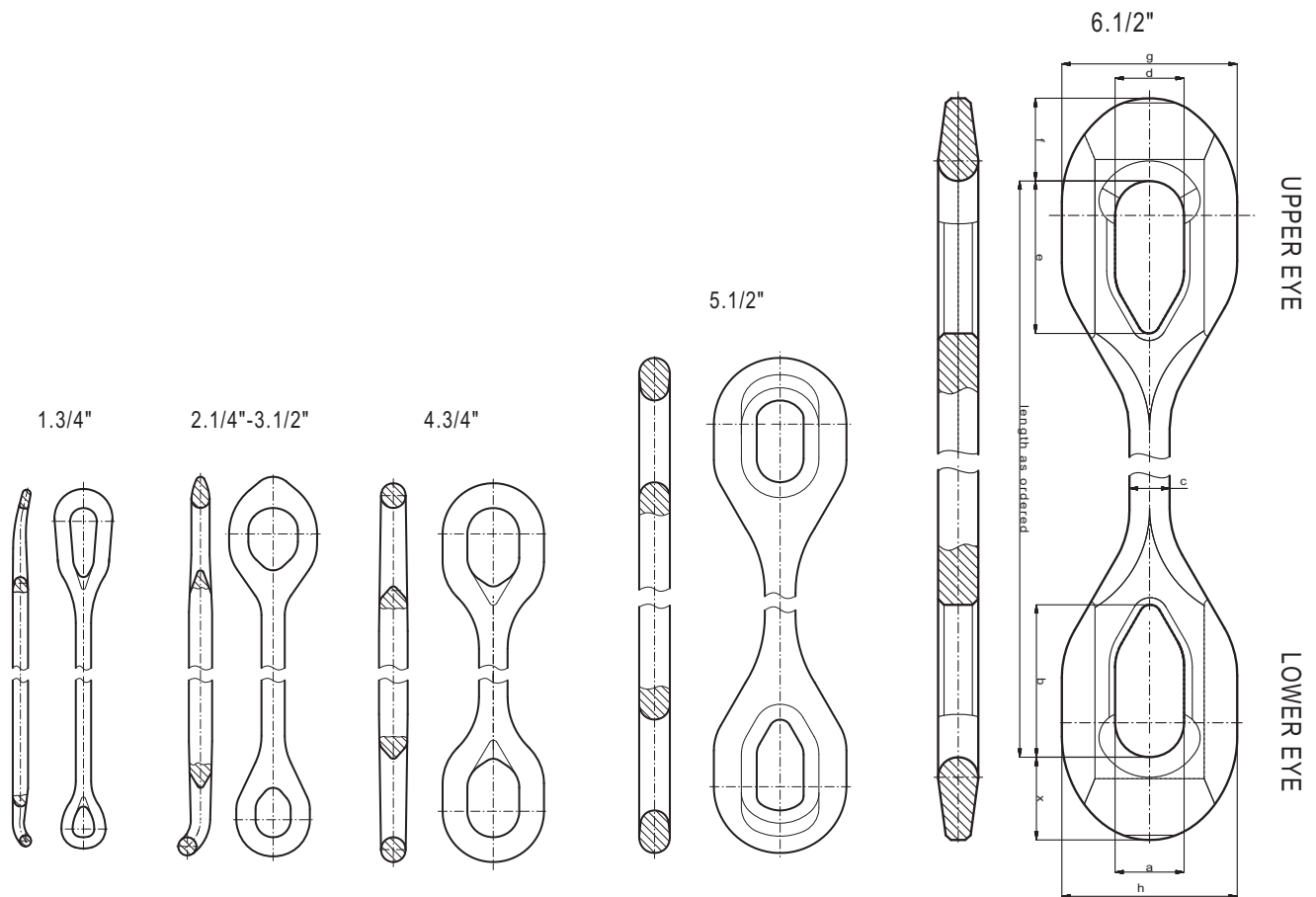
Links / Bails

Description:

Elevator Links connect Top Drive and Elevator to lift and hold heavy tubulars. FORUM's links are forged from one single piece of high grade steel, to reach a max strength. FORUM offers lengths between 48" & 720" and up to 1750 ton capacity.

Features:

- Capacities from 150 to 1750 ton
- Sizes from 48" to 720"
- Customized sizes and loads beyond 1750 ton upon request
- Different eye shapes upon request
- Special transport boxes included



DIMENSIONS

Ton	Size	x	a	b	c	d	e	f	g	h
150	1.3/4"	2.1/4"	4.3/16"	5.1/2"	3"	5.1/4"	13"	3.3/4"	11.3/8"	8.1/2"
250	2.1/4"	2.2/5"	5.1/2"	8"	3"	8"	10.1/4"	5"	14.1/8"	10.1/4"
350	2.3/4"	3"	5.3/5"	8"	3.2/3"	9.1/4"	11.3/4"	5.3/8"	15.3/4"	11.13/16"
500	3.1/2"	3.1/2"	6.3/4"	10.1/4"	4.1/2"	9.1/2"	12"	6.1/16"	17.3/8"	14"
750	4.3/4"	4.3/4"	10"	15"	5.1/2"	10"	15"	4.3/4"	19.1/2"	19.1/2"
1000	5.1/2"	8.3/16"	12.1/2"	17.1/2"	5.1/2"	12.3/4"	17.1/2"	8.3/16"	25.1/2"	25.1/2"
1250	5.1/2"	8.3/16"	12.1/2"	17.1/2"	5.1/2"	12.3/4"	17.1/2"	8.3/16"	25.1/2"	25.1/2"
1500	6.1/2"	6.1/2"	12.1/2"	17"	6.45/64"	12.1/2"	17"	6.1/2"	25.1/2"	25.1/2"



HOISTING EQUIPMENT

Links / Bails

LINKS

Load Rating*	Size	P/N
150 ton	1.3/4" x 48"	134 048-Y
	12" increases	
	1.3/4" x 360"	134 360-Y
250 ton	2.1/4" x 48"	214 048-Y
	12" increases	
	2.1/4" x 480"	214 480-Y
350 ton	2.3/4" x 48"	234 048-Y
	12" increases	
	2.3/4" x 720"	234 720-Y
500 ton	3.1/2" x 72"	312 072-Y
	12" increases	
	3.1/2" x 720"	312 720-Y
750 ton	4.3/4" x 72"	434 072-Y
	12" increases	
	4.3/4" x 720"	434 720-Y
1000 ton	5.1/2" x 96"	512 096-Y
	12" increases	
	5.1/2" x 540"	512 540-Y
1250 ton	6.1/2" x 120"	612 120-Z-1250
	12" increases	
	6.1/2" x 240"	612 240-Z-1250
1500 ton	6.1/2" x 120"	612 120-Z-1500
	12" increases	
	6.1/2" x 240"	612 240-Z-1500
1750 ton	6.1/2" x 120"	612 120-Z-1750
	12" increases	
	6.1/2" x 240"	612 240-Z-1750

More sizes upon request

Build your P/N



Example

134 048 -Y*
-Z**

Size Length Suffix

*-Y for API 8C-PSL1 **-Z for API 8C-PSL2



Length – Available sizes /inch (")

ton	150	250	350	500	750	1000	1250	1500	1750
	048	048	048						
	060	060	060						
	072	072	072	072	072				
	084	084	084	084	084				
	096	096	096	096	096	096			
	108	108	108	108	108	108			
	120	120	120	120	120	120	120	120	120
	132	132	132	132	132	132	132	132	132
	144	144	144	144	144	144	144	144	144
	156	156	156	156	156	156	156	156	156
	168	168	168	168	168	168	168	168	168
	180	180	180	180	180	180	180	180	180
	192	192	192	192	192	192	192	192	192
	204	204	204	204	204	204	204	204	204
	216	216	216	216	216	216	216	216	216
	228	228	228	228	228	228	228	228	228
	240	240	240	240	240	240	240	240	240
	252	252	252	252	252	252			
	264	264	264	264	264	264			
	276	276	276	276	276	276			
	288	288	288	288	288	288			
	300	300	300	300	300	300			
	312	312	312	312	312	312			
	324	324	324	324	324	324			
	336	336	336	336	336	336			
	348	348	348	348	348	348			
	360	360	360	360	360	360			
	372	372	372	372	372	372			
	384	384	384	384	384	384			
	396	396	396	396	396	396			
	408	408	408	408	408	408			
	420	420	420	420	420	420			
	432	432	432	432	432	432			
	444	444	444	444	444	444			
	456	456	456	456	456	456			
	468	468	468	468	468	468			
	480	480	480	480	480	480			
	492	492	492	492	492	492			
	504	504	504	504	504	504			
	516	516	516	516	516	516			
	528	528	528	528	528	528			
	540	540	540	540	540	540			
	552	552	552	552	552	552			
	564	564	564	564	564	564			
	576	576	576	576	576	576			
	588	588	588	588	588	588			
	600	600	600	600	600	600			
	612	612	612	612	612	612			
	624	624	624	624	624	624			
	636	636	636	636	636	636			
	648	648	648	648	648	648			
	660	660	660	660	660	660			
	672	672	672	672	672	672			
	684	684	684	684	684	684			
	696	696	696	696	696	696			
	708	708	708	708	708	708			
	720	720	720	720	720	720			



LINK CONNECTORS



Description:

Link Connectors connect the upper and lower eyes of standard API 8C Elevator Links in an ergonomic and weight-optimized manner. The robust design and quick installation allow safe and efficient lifting of equipment around the well center and drill floor.

Features:

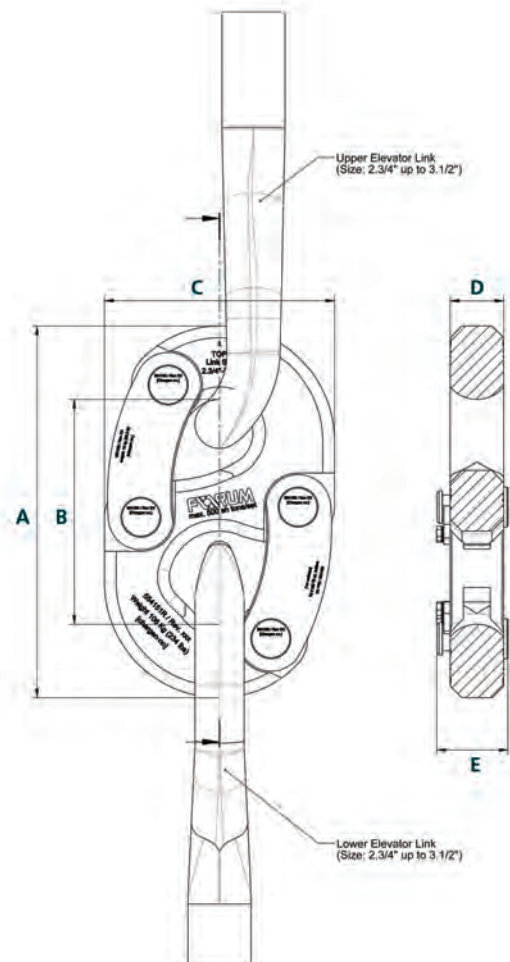
- Available in 350 – 500 ton, other capacities upon request
- Increase length of the total link connection system by 16.54"
- Proof load tested with 1,5 times max load rating
- API 8C specified radii

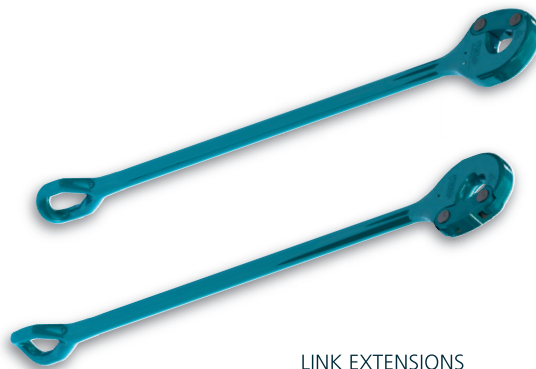
LINK CONNECTORS

Load Rating	Size	P/N	Weight (pair)
350 – 500 ton	2.3/4" – 3.1/2"	554 150	313 kg (691 lbs)

DIMENSION LINK CONNECTORS

A	B	C
27.3 inch (695 mm)	16.54 inch (420 mm)	16.93 inch (430 mm)
D	E	
3.94 inch (100 mm)	5.24 inch (133 mm)	





LINK EXTENSIONS



Description:

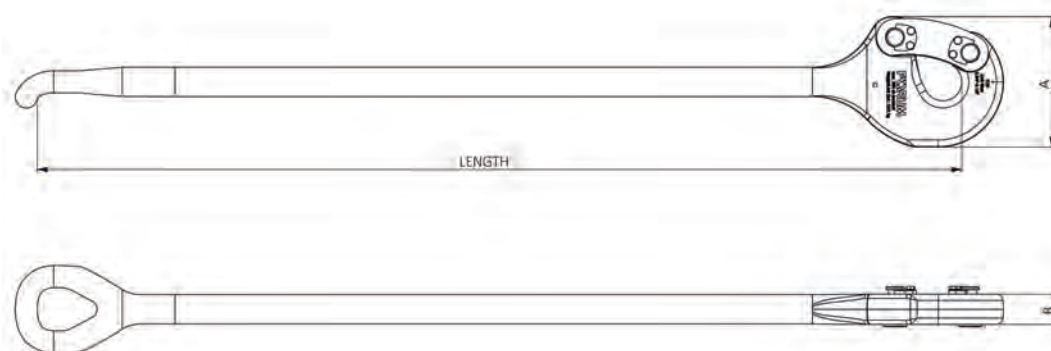
The link extensions connect to the existing standard links, eliminating the need to remove the standard links to install extra-long links. As a result, downtime is decreased and there is no need for an additional set of extra-long elevator links.

Features:

- 350 ton or 500 ton load rating per set
- Length ranges from 48" to 144"
- All radii specified by API 8C

LINK EXTENSIONS

P/N Metric [Imperial]	Upper Link Size		Length [in]	Dim. A in [mm]	Dim. B in [mm]	Weight/set lb [kg]
	Min	Max				
234 048-Y-LE2 [-IM]	2.3/4"	3.1/2"	048"	16,9 [430]	3,9 [100]	819,5 [371,7]
234 072-Y-LE2 [-IM]	2.3/4"	3.1/2"	072"	16,9 [430]	3,9 [100]	975,5 [442,5]
234 096-Y-LE2 [-IM]	2.3/4"	3.1/2"	096"	16,9 [430]	3,9 [100]	1131,4 [513,2]
234 108-Y-LE2 [-IM]	2.3/4"	3.1/2"	108"	16,9 [430]	3,9 [100]	1248,3 [566,2]
234 120-Y-LE2 [-IM]	2.3/4"	3.1/2"	120"	16,9 [430]	3,9 [100]	1287,3 [583,9]
234 132-Y-LE2 [-IM]	2.3/4"	3.1/2"	132"	16,9 [430]	3,9 [100]	1365,3 [619,3]
234 144-Y-LE2 [-IM]	2.3/4"	3.1/2"	144"	16,9 [430]	3,9 [100]	1443,3 [654,7]





PERFECTION LINKS



Description:

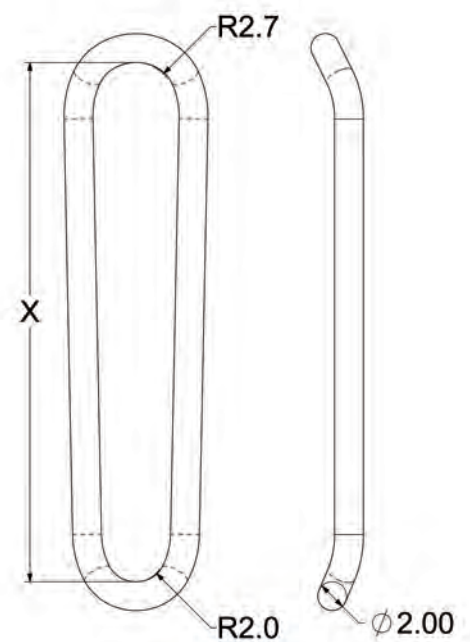
FORUM Perfection Links are designed to be used with a standard drill pipe elevator and becket for light loads when pulling drill collar and are load rated for 150 ton.

Features:

- Available in 36" and 42" lengths

PERFECTION LINKS

Load Rating*	Description	P/N	Weight	Dimension X
150 ton	2" x 36" Perfection Links (Set)	200-036-Y	68 kg (150 lbs)	36
150 ton	2" x 42" Perfection Links (Set)	200-042-Y	78 kg (172 lbs)	42





STANDARD BECKET



THREADED (NC38) BECKET



Description:

FORUM Beckets are designed to be used with a standard drill pipe elevator and perfection links for light loads when pulling drill collar and are load rated for 150 ton.

Features:

- Available in 4 sizes with 18° taper
- Available with NC 38 connection for use with lift sub

BECKETS

Description	P/N	Compatible Bore Codes**	Load Rating	Weight
Drill Collar Lift Beckett, Bore 120-123	E31189-120-123	120, 122, 123	150 ton	93 kg (205 lbs)
Drill Collar Lift Beckett, Bore 121-123	E31189-121-123	121, 122, 123	150 ton	93 kg (205 lbs)
Drill Collar Lift Beckett, Bore 121 and 124	E31189-121-124	121, 124	150 ton	99 kg (218 lbs)
Drill Collar Lift Beckett, Bore 122-124	E31189-122-124	122, 123, 124	150 ton	106 kg (234 lbs)
Drill Collar Lift Beckett, W/NC 38	E31189-NC38*	N/A	150 ton	75 kg (166 lbs)

*Mating Sub Connections available upon request – Alternate Connections available upon request
 Designed and tested to API 8C Requirements **for Bore Code please see Page 84/85 column 2

HOISTING EQUIPMENT

Solid Body Elevator



SBE-1250



VES-SBE-1250



Description:

The Solid Body Elevator (SBE) is designed for handling riser running tools with either fixed or detachable couplings. A solid forged design with highest strength material allows loads up to 1250 ton.

Features:

- Pipe range from 5" – 12.3/4"
- Other sizes upon request
- SBE with fixed bore code
- VES-SBE bushing system for RRT with detachable couplings
- Manufactured acc. to API 8C PSL2

SOLID BODY ELEVATOR (SBE-1250)

Type	Range	Load Rating	P/N	Weight*	Link Size
SBE-1250	5" – 12.3/4"	1250 ton	691 250-Z-BC**	1820 kg (4012 lbs)	1000 – 1500
VES-1-SBE-1250***	5" – 8.5/8"	1250 ton	691 250-Z-VES-1	1610 kg (3549 lbs)	1000 – 1500
VES-2-SBE-1250***	8.3/4" – 9.5/8"	1250 ton	691 250-Z-VES-2	1550 kg (3417 lbs)	1000 – 1500
VES-3-SBE-1250***	9.7/8" – 12.3/4"	1250 ton	691 250-Z-VES-3	1485 kg (3274 lbs)	1000 – 1500

SOLID BODY ELEVATOR BUSHING TYPE (VES-SBE-1250)

VES-1-SBE-1250***	Size	P/N
	6.5/8"	691 253-1-531
	7"	691 253-1-530
	8"	691 253-1-532
	8.1/2"	691 253-1-533
	8.5/8"	691 253-1-544

VES-2-SBE-1250***	Size	P/N
	8.3/4"	691 253-2-534
	9.29"	691 253-2-537
	9.40"	691 253-2-539
	9.5/8"	691 253-2-538

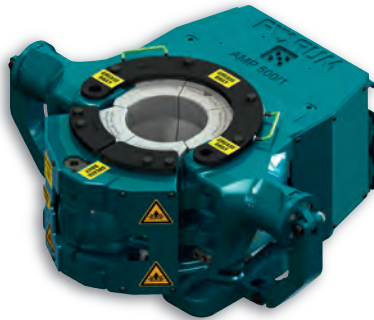
VES-3-SBE-1250***	Size	P/N
	12.3/4"	691 253-2-543



VES-SBE-1250 WITH RISER RUNNING TOOL

HOISTING EQUIPMENT

Automated Multi Pipe Elevator



AMP-500/1

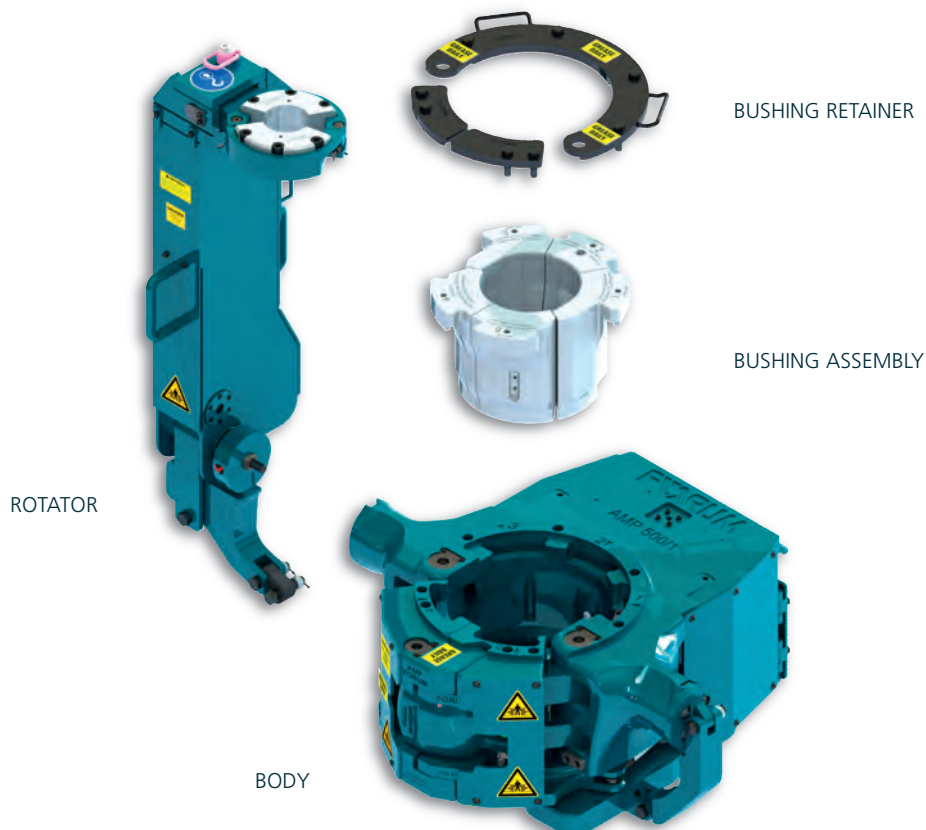


Description:

The AMP Elevator is a hydraulic double door bushing type Elevator for handling tubulars between 2.3/8" – 22" and loads from 350 to 1500 ton.

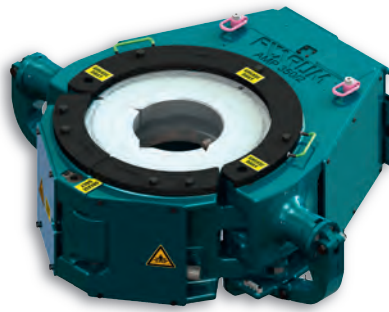
Features:

- Integrated load cell for increased safety
- Trigger closing mechanism
- „Elevator closed“ feedback signal
- Interfaces with Top Drives of all OEMs
- Optional rotator systems:
 - Single acting (+90° doors up)
 - Double acting (+90° doors up / -55° doors down)



HOISTING EQUIPMENT

Automated Multi Pipe Elevator



AMP-350/2



AMP ELEVATORS

	AMP-350/1	AMP-350/2	AMP-500/1	AMP-500/2
P/N with BV and VC control	638 100-Y	638 200-Y	648 100-Y	648 200-Y
Pipe Size	2.3/8" – 11"	9.5/8" – 20"	2.3/8 – 11"	9.5/8" – 22"
Load Rating	350 ton / 18° 350 ton / 45° 350 ton / 90°	350 ton / 18° 350 ton / 45° 350 ton / 90°	500 ton / 18° 750 ton / 45° 750 ton / 90°	500 ton / 90° n/a n/a
Length [mm]/[inch]	900 / 35.43"	1157 / 45.55"	1092 / 43"	1260 / 49.60"
Width [mm]/[inch]	1100 / 43.30"	1382 / 54.41"	1150 / 45.27"	1562 / 61.49"
Height [mm]/[inch]	442 / 17.4"	442 / 17.4"	465 / 18.3"	470 / 18.50"
Ear to Ear [mm]/[inch]	750 / 29.52"	1050 / 41.34"	830 / 32.68"	1200 / 47.24"
Weight*	800 kg (1764 lbs)	1020 kg (2249 lbs)	1000 kg (2205 lbs)	1300 kg (2866 lbs)
Link Size [t]	350/500	350/500	500/750	500/750

Bushing Assembly

P/N	638 106-BC**	638 206-BC**	648 006-BC**	648 206-BC**
-----	--------------	--------------	--------------	--------------

Hook Up Kit

P/N	648 100-HUK	648 100-HUK	648 100-HUK	648 100-HUK
-----	-------------	-------------	-------------	-------------

AMP Rotator System

Elevator Rotator System (double-acting +90° doors up/ -55° doors down)	678 800-350	678 800-350	678 800-500	678 800-500
Elevator Rotator System (single-acting +90° doors up/ -55° doors down)	678 801-350	678 801-350	678 801-500	678 801-500

Control Unit AMP/SD

P/N	645 002-EL	645 002-EL	645 002-EL	645 002-EL
-----	------------	------------	------------	------------

Control Unit Rotator (hydraulic)

P/N	678 190-H	678 190-H	678 190-H	678 190-H
-----	-----------	-----------	-----------	-----------

Control Unit Rotator (electric)

P/N	678 190-EL	678 190-EL	678 190-EL	678 190-EL
-----	------------	------------	------------	------------

Stand-alone Control Unit

P/N	757 190	757 190	757 190	757 190
-----	---------	---------	---------	---------

HOISTING EQUIPMENT

Automated Multi Pipe Elevator



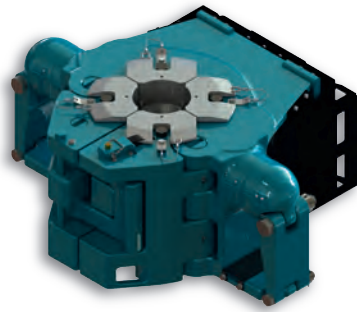
AMP-1250



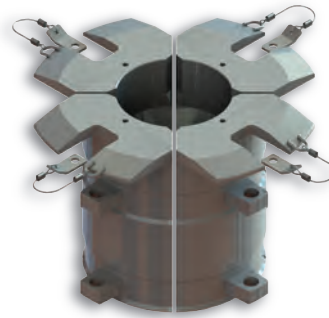
VES-SD-500/3	AMP-750/1	AMP-1000/1	AMP-1250/1
646 600-Y	678 100-Y	618 100-Y	688 000-Y
20" – 30"	2.3/8" – 11"	2.3/8" – 11"	5.1/2" – 9.7/8"
500 ton / 90°	750 ton / 18°	1000 ton / 18°	1250 ton / 18°
n/a	1000 ton / 45°	1000 ton / 45°	1500 ton / 45°
n/a	1000 ton / 90°	1000 ton / 90°	1500 ton / 90°
1550 / 61.02"	1105.5 / 43.52"	1105.5 / 43.52"	1181.4 / 46.5"
2016 / 79.37"	1370 / 53.94"	1370 / 53.94"	1432 / 56"
490 / 19.29"	571 / 22.5"	571 / 22.5"	643.4 / 25.33"
1715 / 67.52"	960 / 37.8"	960 / 37.8"	1050 / 41.34"
1980 kg (4365 lbs)	1430 kg (3153 lbs)	1430 kg (3153 lbs)	2018 kg (4449 lbs)
500	750/1000	750/1000	1250/1500
645 600-BC**	678 106-BC**	618 106-BC**	688 006-BC**
675 100-HUK	648 100-HUK	648 100-HUK	648 100-HUK
678 800-500	678 800-750	678 800-1000	678 800-1250
678 801-500	678 801-750	678 801-1000	678 801-1250
645 002-EL	645 002-EL	645 002-EL	645 002-EL
678 190-H	678 190-H	678 190-H	678 190-H
678 190-EL	678 190-EL	678 190-EL	678 190-EL
757 190	757 190	757 190	757 190

Calculated sound pressure level: 87,8 dB(A)

Xtreme Performance Elevator – XP-1000



XP-1000 ELEVATOR



XP-1000 BUSHING



Description:

Forum XP-1000 Elevators are hydraulically operated, side door elevators which are operated remotely from the drillers cabin or standalone control panels. Designed to handle 18° and 45° type drill pipe ranging from 3.1/2" – 6.906" and load ratings from 1000 ton at 18° up to 1250 ton at 45°.

Features:

- Link compatibility: 750 – 1250 ton
- Load activated latch lock with manual safety engagement for loads less than 1000 lbs
- Insert bushings available for multiple pipe sizes and grades
- Interfaces with existing rig controls
- Models available that interface with multiple control systems
- Hydraulic and pneumatic closed feedback options available

XP-1000 ELEVATORS (WITHOUT BUSHINGS)

Type	Range	P/N	18° Load Rating	45° Load Rating	Weight	Link Size
XP-1000	3.5" – 6.906"	E100100-02	1000 ton	1250 ton	1491 kg (3288 lbs)	750 – 1250
XP-1000	3.5" – 6.906"	E100100-03	1000 ton	1250 ton	1520 kg (3350 lbs)	750 – 1250
XP-1000	3.5" – 6.906"	E100100-06	1000 ton	1250 ton	1528 kg (3369 lbs)	750 – 1250
XP-1000	3.5" – 6.906"	E100200-02	1000 ton	1000 ton	1491 kg (3288 lbs)	750 – 1250
XP-1000	3.5" – 6.906"	E100200-03	1000 ton	1000 ton	1520 kg (3350 lbs)	750 – 1250
XP-1000	3.5" – 6.906"	E100200-06	1000 ton	1000 ton	1528 kg (3369 lbs)	750 – 1250

Available Hydraulic Controls

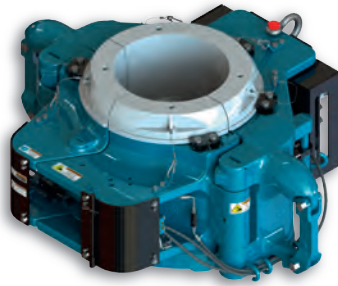
- 02: Standard
- 03: Interface
- 06: Interface w/ Bypass

XP-1000 BUSHINGS

Size	Taper	P/N	Load Rating in E100100	Load Rating in E100200	Weight
3.1/2" EU	18°	E100206-120	1000 ton	1000 ton	193 kg (426 lbs)
4" EU, 4.1/2" IU, 4.1/2" IEU	18°	E100206-122	1000 ton	1000 ton	178 kg (393 lbs)
4.1/2" EU, 5" IEU	18°	E100206-123	1000 ton	1000 ton	172 kg (378 lbs)
5.1/2" IEU (FH)	18°	E100206-124	1000 ton	1000 ton	162 kg (356 lbs)
5.7/8"	18°	E100206-5875	1000 ton	1000 ton	159 kg (350 lbs)
6.5/8"	45°	E100206-6600	1250 ton	1000 ton	138 kg (305 lbs)
6.5/8" IEU / 6.906"	18°	E100206-7500	1000 ton	1000 ton	132 kg (291 lbs)
6.5/8" EU	18°	E100206-7600	1000 ton	1000 ton	128 kg (281 lbs)

HOISTING EQUIPMENT

Automated Side Door Elevator – ASD



ASD-IB ELEVATOR



Description:

FORUM's hydraulically-operated, fully Automated Side Door Elevator (ASD) quickly and safely picks up many ranges of casing and other tubulars, enabling safe hoisting and movement within the derrick and around the rig floor. Additionally, the ASD is equipped with multiple safety features and operator feedback options. All components are designed, manufactured and tested to the latest API 8C edition.

Features:

- Directly compatible with various lock out systems
- Hydraulic or Pneumatic Feedback Signals
- Plug-and-Play with most Operating Systems
- Optional Control Panel
- Uses common HPU pressures and flowrates improving efficiency through use of existing rig systems
- Dual bulkhead equipped for variable operating systems
- Streamlined Design for minimal operational space required

ASD ELEVATORS (WITHOUT BUSHINGS)

Type	Range	P/N	90° Load Rating	Weight	Link Size
ASD-500/1	9.5/8" – 16"	E40400-06*	500 ton	1364 kg (3007 lbs)	250 – 500
ASD-500/2	16" – 24"	E40600-06*	500 ton	1939 kg (4274 lbs)	500 – 1250
ASD-350/3	24" – 30"	E40650-06*	350 ton	2169 kg (4782 lbs)	350 – 1250
ASD-350/4	30" – 36"	E40700-06*	350 ton	2440 kg (5380 lbs)	350 – 1250

ASD-IB ELEVATORS (BUSHING STYLE LESS BUSHINGS)

Type	Range	P/N	90° Load Rating	Weight	Link Size
ASD-500/1	9.5/8" – 14.3/8"	E40400-06-IB	500 ton	1264 kg (2787 lbs)	250 – 500
ASD-500/2	14.9/16" – 22"	E40600-06-IB	500 ton	1970 kg (4342 lbs)	500 – 1250

ASD-IB BUSHINGS (ASD-500/1)

Type	Connection/Pipe Size	Bushing P/N	Rise	Weight
Bushing, 14.00 TTR-HD Box	14.00 TTR-HD	1112029	12"	231 kg (510 lbs)
Bushing, 10.75 TTR-HD Box	10.75 TTR-HD	1112080	12"	313 kg (690 lbs)
Bushing, 9.63 ZF2005 Connection	9.63 ZF2005	1114044	12"	346 kg (763 lbs)
Bushing, 141 Bore	9.5/8" Casing	1114382	12"	360 kg (793 lbs)
Bushing, 143 Bore	11.3/4" Casing	1114460	12"	309 kg (682 lbs)
Bushing, 10.19 ZF2005 Connection	10.19 ZF2005	1114479	12"	304 kg (671 lbs)

ASD-IB BUSHINGS (ASD-500/2)

Type	Connection/Pipe Size	Bushing P/N	Rise	Weight
Bushing, 16.77 ZF2005/PR-85	16.77 ZF2005/PR-85	1117337	12"	733 kg (1615 lbs)
Bushing, 14.00 TTR-HD Box	14.00 TTR-HD	1145888	12"	813 kg (1792 lbs)

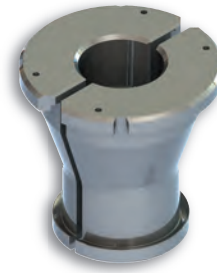
*Available Hydraulic Controls: -06 – Dual Control (Standard & XP)

HOISTING EQUIPMENT

Hydraulic Operated Elevators



VES-CL-250



VES-CL BUSHING



Description:

FORUM's Hydraulic Center Latch Elevators are equipped with a bushing system to handle tubulars with square and tapered load shoulders between 2.3/8" – 9.7/8".

Features:

- Pipes from 2.3/8" – 9.7/8"
- Capacities from 150 to 1250 ton
- For drill pipe, casing, drill collar, tubing and RRT
- „Elevator closed“ feedback signal
- Optionally available with wear bushing to minimize wear and to decrease the noise level
- Interfaces with Top Drives of all OEMs

HYDRAULIC VES-CL SERIES (WITHOUT BUSHINGS)

Type	Range	P/N	Load Rating	Weight	Link Size
VES-CL-150	2.3/8" – 5.1/4"	611 900-Y-H-TF**	150 ton	132 kg (290 lbs)	150 – 350
VES-CL-250	2.3/8" – 5.1/4"	612 900-Y-H-TF**	250 ton	255 kg (563 lbs)	250 – 500
VES-CL-350	2.3/8" – 7"	613 000-Y-H-F**	350 ton	425 kg (937 lbs)	250 – 500
VES-CL-500	2.3/8" – 7"	615 900-Y-H**	500 ton	635 kg (1399 lbs)	500 – 750
VES-CL-750	3.1/2" – 7"	617 500-Y-H**	750 ton	1831 kg (4037 lbs)	750 – 1000
VES-CL-1000	3.1/2" – 7"	611 000-Y-H**	1000 ton	2096 kg (4620 lbs)	1000 – 1250
VES-CL-1250	3.1/2" – 7"	612 500-Y-H**	1250 ton	2041 kg (4500 lbs)	1000 – 1250

Calculated sound pressure level: 87,8 dB(A)

VES-CL BUSHINGS

Type	P/N
VES-CL-150/250	612 900-BC *
VES-CL-350/500	613 902-BC *
VES-CL-750	617 510-BC *
VES-CL-1000	611 030-BC *
VES-CL-1250	upon request

WEAR BUSHINGS

Type	P/N
VES-CL-350/500	615 985-BC *

*BC = Bore Code – see Page 84/85 column 1 **add -WB for Wear Bushing option
For hydraulically operated SDL and SDS Elevators please see Page 22.



VES-ACL



Description:

FORUM's Pneumatic Center Latch Elevators are equipped with a bushing system to handle tubulars with square and tapered load shoulders between 2.3/8" – 7.5/8". The ABVC version can handle flush tubulars by means of an interchangeable slip system.

Features:

- Pipes from 2.3/8" – 7.5/8"
- Capacities from 150 to 500 ton
- „Elevator closed" visual feedback
- Optionally available with wear bushing to minimize wear and to decrease the noise level

AIR OPERATED CENTER LATCH ELEVATOR (ACL), 18° TAPER

Type	Range	P/N	Load Rating	Weight	Link Size
ACL-250	3.1/2" – 5.1/2"	612 970-Y-BC*	250 ton	494 kg (1090 lbs)	250 – 500
ACL-350	3.1/2" – 6.5/8"	613 970-Y-BC*	350 ton	497 kg (1095 lbs)	250 – 500
ACL-500	4" – 6.5/8"	615 970-Y-BC*	500 ton	973 kg (2145 lbs)	500 – 750

Calculated sound pressure level: 101 dB(A)

AIR OPERATED CENTER LATCH ELEVATOR, BUSHING TYPE (VES-ACL)

Type	Range	P/N	Load Rating	Weight	Link Size
VES-ACL-250	2.3/8" – 5.1/4"	612 970-Y	250 ton	490 kg (1080 lbs)	250 – 500
VES-ACL-350	2.3/8" – 7"	613 970-Y	350 ton	494 kg (1090 lbs)	250 – 500
VES-ACL-500	2.3/8" – 7"	615 970-Y	500 ton	968 kg (2134 lbs)	500 – 750

Calculated sound pressure level: 101 dB(A)

AIR OPERATED SLIP TYPE ELEVATOR (ABVC)

Type	Range	P/N	Load Rating	Weight	Link Size
ABVC-150	1.315" – 7"	671 650-Y	150 ton	506 kg (1115 lbs)	150 – 500
ABVC-200	2.3/8" – 7.5/8"	672 000-Y	200 ton	1027 kg (2265 lbs)	150 – 500

VES-ACL BUSHINGS

Type	P/N
VES-ACL-250	612 900-BC*
VES-ACL-350/500	613 902-BC*

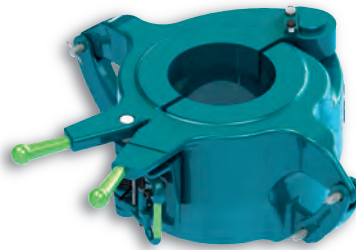
TRIGGER CLOSING TOOL

Type	P/N
ACL-250	613 700-TCT
ACL-350/500	613 700-TCT
VES-ACL-250	613 700-TCT
VES-ACL-350/500	613 700-TCT

*BC = Bore Code – see Page 84/85 column 1



VES-CL-250



CLS-150/3



Description:

FORUM CL / VES-CL (18° – 90°) and CLS (90°) Series Elevators are manually operated center latch elevators designed to handle pipe sizes from 2.3/8" – 9.5/8" and load ratings from 100 to 1250 ton.

Features:

- Pipe sizes from 2.3/8" – 9.5/8"
- Capacities from 150 to 1250 ton
- Optionally available with wear bushing to minimize wear and to decrease the noise level
- Hydraulic version: See page 18

CL SERIES, 18° TAPER

Type	Range	P/N	Load Rating	Weight	Link Size
CL-150/2	4" – 5.1/2"	611 520-Y-BC *	150 ton	165 kg (364 lbs)	150 – 350
CL-250	3.1/2" – 5.1/2"	612 540-Y-BC *	250 ton	255 kg (562 lbs)	250 – 500
CL-350	3.1/2" – 6.5/8"	613 540-Y-BC *	350 ton	326 kg (719 lbs)	250 – 500
CL-500	3.1/2" – 6.5/8"	615 000-Y-BC *	500 ton	655 kg (1444 lbs)	500 – 750
CL-750	5" – 8.3/4"	617 500-Y-BC *	750 ton	1937 kg (4270 lbs)	750 – 1000
CL-1000	5" – 9.5/8"	611 000-Y-BC *	1000 ton	2313 kg (5100 lbs)	1000 – 1250
CL-1250	5" – 9.5/8"	612 500-Y-BC *	1250 ton	2041 kg (4500 lbs)	1000 – 1250

Calculated sound pressure level: 82,5 dB(A)

VES-CL

Type	Range	P/N	Load Rating	Weight	Link Size
VES-CL-150	2.3/8" – 5.1/4"	611 900-Y**	150 ton	148 kg (326 lbs)	150 – 350
VES-CL-250	2.3/8" – 5.1/4"	612 900-Y**	250 ton	232 kg (511 lbs)	250 – 500
VES-CL-350	2.3/8" – 7"	613 000-Y**	350 ton	395 kg (871 lbs)	250 – 500
VES-CL-500	2.3/8" – 7"	615 900-Y**	500 ton	704 kg (1552 lbs)	500 – 750
VES-CL-750	3.1/2" – 7"	617 500-Y**	750 ton	1835 kg (4045 lbs)	750 – 1000
VES-CL-1000	3.1/2" – 7"	611 000-Y**	1000 ton	2194 kg (4837 lbs)	1000 – 1250
VES-CL-1250	3.1/2" – 7"	612 500-Y**	1250 ton	2041 kg (4500 lbs)	1000 – 1250

Calculated sound pressure level: 82,5 dB(A)

VES-CL BUSHINGS***

Type	P/N	Type	P/N
VES-CL-150/250	612 900-BC *	VES-CL-750	617 510-BC *
VES-CL-350/500	613 902-BC *	VES-CL-1000	611 030-BC *

WEAR BUSHINGS

Type	P/N
CL-250/350/500	613 543-BC *
VES-CL-350/500	615 985-BC *

CLS SERIES

Type	Range	P/N	Load Rating	Weight	Link Size
CLS-100/1	2.3/8" – 4.7/8"	621 100-Y-BC *	100 ton	90 kg (198 lbs)	150 – 350
CLS-150/2	4.7/8" – 7.1/2"	621 150-Y-BC *	150 ton	157 kg (345 lbs)	150 – 350
CLS-150/3	7.1/2" – 9.7/8"	621 155-Y-BC *	150 ton	187 kg (412 lbs)	150 – 350

Calculated sound pressure level: 82,5 dB(A)



G SERIES ELEVATOR



G SERIES BUSHING



Description:

FORUM A & G Series Elevators are manually operated center latch elevators designed to handle all 90° (A Series) and 18° (G Series) pipes. Pipe size ranges from 1" – 6.5/8" and load ratings from 65 up to 350 ton.

Features:

- Link compatibility: 100 to 500 ton
- Latch with safety latch lock
- Optional interchangeable insert bushing style available for MGG & GG models
- Optional wear bushings available for MGG & GG models
- Engineered slim hole bores available for some models (G Series)

A SERIES, 90° TAPER

Type	Range	P/N	Load Rating	Weight	Link Size
TA-65	1" – 2.7/8"	E32385-BC*	65 ton	54 kg (120 lbs)	100 – 250
TA-65	3.1/2" – 4.3/4"	E32386-BC*	65 ton	76 kg (167 lbs)	100 – 350
TA-100	2.3/8" – 2.7/8"	E32383-BC*	100 ton	66 kg (145 lbs)	100 – 250
TA-100	3.1/2" – 4.3/4"	E32384-BC*	100 ton	88 kg (193 lbs)	100 – 250
MRA	2.3/8" – 5.1/2"	E30158-BC*	150 ton	113 kg (249 lbs)	100 – 350
MAA	2.3/8" – 3.1/2"	E12526-BC*	175 ton	87 kg (192 lbs)	250 – 500

G SERIES, 18° TAPER

Type	Range	P/N	Load Rating	Weight	Link Size
MG	2.3/8" – 5"	E30157-BC*	100 ton	117 kg (257 lbs)	100 – 350
RG-150	2.3/8" – 3.1/2"	E30156-Y-BC*	150 ton	142 kg (313 lbs)	100 – 350
RG-175	4" – 4.1/2"	E23540-BC*	175 ton	197 kg (435 lbs)	250 – 350
MGG	2.7/8" – 5.1/2"	E35005-BC*/**	250 ton	292 kg (643 lbs)	250 – 350
GG	3.1/2" – 5.7/8"	E31068-BC*/**	350 ton	366 kg (807 lbs)	250 – 350

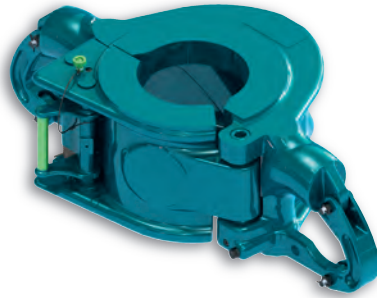
G SERIES WEAR BUSHINGS

Type	Bushing ID (in.)	P/N
Wear Bushing f/ 118 Bore	3"	E200275-118
Wear Bushing f/ 119 & 120 Bores	3.5/8"	E200275-120
Wear Bushing f/ 121 Bore	4.1/8"	E200275-121
Wear Bushing f/ 122 & 5877 Bores	4.5/8"	E200275-122
Wear Bushing f/ 123 & 5876 Bores	5.1/8"	E200275-123
Wear Bushing f/ 124 Bore	5.5/8"	E200275-124
Wear Bushing f/ 5875 Bore	6"	E200275-5875
Wear Bushing f/ 655 & 740 Bores	6.5/8"	E200275-740

*BC = Bore Code – see Page 84/85 column 2 **add -WB for Wear Bushing option

HOISTING EQUIPMENT

Side Door Elevators



SDL-150/1



Description:

FORUM SDL / SDS Series Elevators are manually operated Side Door Elevators designed to handle all 90° connections including drill collars, collar type drill pipe, casing and tubing. Pipe size ranges from 2.3/8" – 42" and load ratings from 100 to 750 ton.

Features:

- Link compatibility: 150 to 750 ton
- Latch with safety latch lock
- „Elevator closed“ verification pin
- Safe area operating handles
- SDL series: Weight optimized; one hand operation

SDL / SDS SERIES – MANUALLY OPERATED

Type	Range	P/N	Load Rating	Weight	Link Size
SDL-100	2.3/8" – 5.3/4"	651 010-Y-BC *	100 ton	82 kg (181 lbs)	150 – 500
SDL-150/1	4.3/8" – 8"	651 510-Y-BC *	150 ton	121 kg (267 lbs)	150 – 500
SDL-150/2	8" – 11"	651 520-Y-BC *	150 ton	145 kg (320 lbs)	150 – 500
SDL-150/3	11" – 14"	651 530-Y-BC *	150 ton	170 kg (375 lbs)	150 – 500
SDL-150/5	18" – 22"	651 550-Y-BC *	150 ton	310 kg (683 lbs)	150 – 500
SDS-150/7	24" – 30"	641 620-Y-BC *	150 ton	878 kg (1936 lbs)	150 – 500
SDS-250/0	6.1/2" – 9.5/8"	642 600-Y-BC *	250 ton	244 kg (538 lbs)	250 – 500
SDS-250/1	9.5/8" – 13.3/8"	642 500-Y-BC *	250 ton	283 kg (624 lbs)	250 – 500
SDS-250/2	13.3/8" – 18.5/8"	642 520-Y-BC *	250 ton	438 kg (966 lbs)	250 – 500
SDS-250/3	18.5/8" – 20"	642 540-Y-BC *	250 ton	416 kg (917 lbs)	250 – 500
SDS-250/5	24" – 30"	642 580-Y-BC *	250 ton	762 kg (1680 lbs)	250 – 500
SDS-250/6	30" – 36"	642 620-Y-BC *	250 ton	1195 kg (2635 lbs)	250 – 500
SDS-250/7	36.1/2" – 42"	642 630-Y-BC *	250 ton	2025 kg (4464 lbs)	250 – 500
SDS-350/1	6.5/8" – 9.3/4"	643 500-Y-BC *	350 ton	433 kg (955 lbs)	350 – 500
SDS-350/2	10.3/4" – 16.3/4"	643 520-Y-BC *	350 ton	662 kg (1459 lbs)	350 – 500
SDS-350/4	18.5/8" – 21.1/2"	643 560-Y-BC *	350 ton	712 kg (1570 lbs)	350 – 500
SDS-350/5	24" – 30"	643 580-Y-BC *	350 ton	1079 kg (2379 lbs)	350 – 500
SDS-350/6	30" – 36"	643 570-Y-BC *	350 ton	1052 kg (2320 lbs)	350 – 500
SDS-500	9.5/8" – 16"	645 500-Y-BC *	500 ton	1010 kg (2227 lbs)	350 – 500
SDS-750	9.5/8" – 16"	647 500-Y-BC *	750 ton	980 kg (2161 lbs)	500 – 750

Calculated sound pressure level: 82,5 dB(A)

SDL / SDS SERIES – HYDRAULICALLY OPERATED

Type	Range	P/N	Load Rating	Weight	Link Size
SDL-150/2	8" – 11"	651 520-Y-BC *-H	150 ton	250 kg (551 lbs)	150 – 500
SDL-150/3	11" – 14"	651 530-Y-BC *-H	150 ton	270 kg (595 lbs)	150 – 500
VES-SDL-150/3	8.5/8" – 12.3/4"	651 530-Y-VES-H	150 ton	375 kg (827 lbs)	150 – 500
SDS-150/7	24" – 30"	641 620-Y-BC *-H	150 ton	1080 kg (2381 lbs)	150 – 500
SDS-250/1	9.5/8" – 13.3/8"	642 500-Y-BC *-H	250 ton	499 kg (1100 lbs)	250 – 500
SDS-250/3	18.5/8" – 20"	642 540-Y-BC *-H	250 ton	615 kg (1356 lbs)	250 – 500
SDS-350/4	18.5/8" – 21.1/2"	643 560-Y-BC *-H	350 ton	791 kg (1744 lbs)	250 – 500
VES-SDS-500	9.5/8" – 16"	645 570-Y-H	500 ton	975 kg (2150 lbs)	500 – 750

Calculated sound pressure level: 82,5 dB(A)



SLX SERIES ELEVATOR



Description:

FORUM SLX Series Elevators are manually operated Side Door Elevators designed to handle all 90° connections including drill collars, collar type drill pipe, casing and tubing. Pipe size ranges from 4.1/2" – 26" and load ratings from 65 to 250 ton.

Features:

- Link compatibility: 100 to 500 ton
- Latch with safety latch lock
- Manually operated secondary latch lock
- SLX-250 models are equipped with a patented manually operated rotary secondary latch lock
- Safe area operating handles
- Additional handle at the rear for safe and easy handling

SLX-65

Range	P/N	Load Rating	Weight	Link Size
5.1/2" – 8.5/8"	E38-067-BC*	65 ton	110 kg (243 lbs)	100 – 350
9" – 10.3/4"	E38-809-BC*	65 ton	120 kg (265 lbs)	100 – 350
11" – 14.1/4"	E38-137-BC*	65 ton	156 kg (344 lbs)	100 – 350

SLX-150

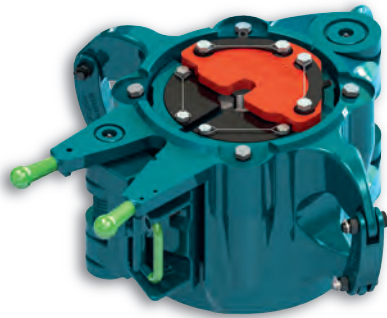
Range	P/N	Load Rating	Weight	Link Size
5.1/2" – 8.5/8"	E31239-BC*	150 ton	147 kg (324 lbs)	100 – 500
9.5/8" – 10.3/4"	E33950-BC*	150 ton	162 kg (358 lbs)	100 – 500
11.3/4" – 14"	E33982-BC*	150 ton	268 kg (591 lbs)	100 – 500
16" – 20"	E33632-BC*	150 ton	418 kg (921 lbs)	100 – 500

SLX-250

Range	P/N	Load Rating	Weight	Link Size
4.1/2" – 9.5/8"	1029437-BC*	250 ton	245 kg (539 lbs)	250 – 500
9.5/8" – 14"	1033575-BC*	250 ton	329 kg (725 lbs)	250 – 500
14" – 20"	1035817-BC*	250 ton	467 kg (1030 lbs)	250 – 500
20" – 26"	1045253-BC*	250 ton	597 kg (1317 lbs)	250 – 500

HOISTING EQUIPMENT

Slip Type Elevators



BVC-100



BVC SLIP ASSEMBLY



Description:

FORUM BVC / BVT Series Slip Type Elevators are manually operated, center latch, slip type elevators designed to handle upset or collar type casing and tubing. Pipe size ranges from 1.315" – 7.3/4" and load ratings from 75 to 200 ton.

Features:

- Pipe sizes from 1.315" up to 7.3/4"
- Capacities from 75 to 200 ton
- Optionally available with Remote Slip Setting (RSS)
- Latch with safety latch lock
- 4-slip design
- Safe area operating handles

BVC / BVT SERIES

Type	Range	P/N	Load Rating	Weight	Link Size
BVT-75	1.315" – 3.1/2"	670 700-Y	75 ton	185 kg (408 lbs)	150 – 350
BVC-75	1.315" – 7"	670 720-Y	75 ton	203 kg (447,5 lbs)	150 – 350
BVT-100	1.315" – 3.1/2"	671 000-Y	100 ton	188 kg (414,5 lbs)	150 – 350
BVC-100	1.315" – 7"	671 100-Y	100 ton	200 kg (441 lbs)	150 – 350
BVC-125	1.315" – 7"	671 200-Y	125 ton	353 kg (778,2 lbs)	150 – 500
BVC-150	1.315" – 7"	671 500-Y	150 ton	352 kg (776 lbs)	150 – 500
BVC-200	2.3/8" – 7.3/4"	672 000-Y	200 ton	520 kg (1146,4 lbs)	150 – 500

Calculated sound pressure level: 82,5 dB(A)

BVC SERIES WITH REMOTE SLIP SET

Type	Range	P/N	Load Rating	Weight	Link Size
BVC-75-RSS	1.315" – 7"	670 720-Y-RSS	75 ton	214 kg (472 lbs)	150 – 350
BVC-100-RSS	1.315" – 7"	671 100-Y-RSS	100 ton	202 kg (445 lbs)	150 – 350
BVC-125-RSS	1.315" – 7"	671 200-Y-RSS	125 ton	354 kg (780 lbs)	150 – 500
BVC-150-RSS	1.315" – 7"	671 500-Y-RSS	150 ton	353 kg (778,2 lbs)	150 – 500
BVC-200-RSS	2.3/8" – 7.3/4"	672 000-Y-RSS	200 ton	967 kg (2132 lbs)	150 – 500

Calculated sound pressure level: 82,5 dB(A)

BVC SLIPS (INCLUDING SETTING RING AND INSERTS)

Type	Rated Capacity	1.315"	1.66"	1.9"	2" & 2.1/16"	2.3/8"	2.7/8"
BVT	75 – 100 ton	671 028	671 029	671 030	671 031	671 032	671 033
BVC/ABVC	75 – 150 ton	671 168	671 169	671 170	671 171	671 172	671 173
BVC/ABVC	200 ton	n/a	n/a	n/a	n/a	672 172	672 173

Type	3.1/2"	4"	4.1/2"	5"	5.1/2"	6.5/8"	7"	7.5/8"	7.3/4"
BVT	671 034	n/a	n/a	n/a	n/a	n/a	n/a	n/a	n/a
BVC/ABVC	671 134	671 135	671 136	671 137	671 138	671 139	671 140	n/a	n/a
BVC/ABVC	672 134	672 135	672 136	672 137	672 138	672 139	672 140	672 175	672 176



Y SERIES ELEVATOR



Description:

FORUM Y Series Slip Type Elevators are manually operated, center latch, slip type elevators designed to handle upset or collar type casing and tubing. Pipe size ranges from 3/4" – 7.5/8" and load ratings from 20 to 200 ton.

Features:

- Link compatibility: 100 to 500 ton
- Latch with safety latch lock
- 4-slip design
- Safe area operating handles
- Additional handle at the rear for safety and maneuverability

SLIP TYPE ELEVATORS

Type	Range	P/N	Load Rating	Weight	Link Size
LYT	3/4" – 2.1/16"	E28750	20 ton	27 kg (60 lbs)	100
MYT	1.050" – 2.7/8"	E29328	40 ton	74 kg (164 lbs)	100 – 350
YT	1" – 3.1/2"	E23105	75 ton	171 kg (377 lbs)	100 – 250
HYT	2.3/8" – 3.1/2"	E39284	150 ton	268 kg (591 lbs)	100 – 500
YC	3.1/2" – 7"	E24140	75 ton	205 kg (452 lbs)	100 – 250
HYC	3.1/2" – 7.5/8"	E55310	200 ton	474 kg (1044 lbs)	250 – 500

SLIPS

Type	Rated Capacity	3/4"	1"	1.1/4"	1.1/2"	2.1/16"
LYT	20 ton	E28745-7	E28745-2	E28745-3	E28745-4	E28745-6

Type	Rated Capacity	1.050"	1.315"	1.66"	1.9"	2"	2.1/6"	2.3/8"	2.7/8"
MYT	40 ton	E29343-8	E29343-7	E29343-6	E29343-5	E29343-4	E29343-3	E29343-2	E29343-1
YT	75 ton		E23108-11	E23108-10	E23108-9	E23108-8	E23108-7	E23108-6	E39235-2
HYT	150 ton							E39259-4	E39235-2
YC	75 ton								
HYC	200 ton								

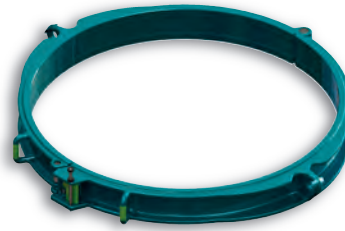
Type	Rated Capacity	3.1/2"	4"	4.1/2"	5"	5.1/2"	6.5/8"	7"	7.5/8"
MYT	40 ton								
YT	75 ton	E39258-4							
HYT	150 ton	E39258-4							
YC	75 ton	E34931	E26830	E24072-5	E24072-7	E24072-2	E24077-7	E24077-1	
HYC	200 ton	E55509	E55510	E55511	E55512	E55512-4	E55514	E55515	E70009

HOISTING EQUIPMENT

Single Joint Elevators



SJD ELEVATOR



SJS ELEVATOR



Description:

FORUM Single Joint Elevators are manually operated, Center Latch Elevators designed to handle all 18° type Drill Pipe and 90° connections including Drill Collars, Collar Type Drill Pipe, Casing and Tubing. Pipe size ranges from 2.3/8" – 42" and a Load Rating of 2.5 up to 10 ton.

Features:

- Manually operated
- Capacities from 2.5 up to 10 ton
- Pipe range from 2.3/8" up to 42"
- Safe area operating handles
- Latch with safety latch lock
- „Elevator closed" verification pin

SJS SERIES

Type	Range	P/N	Load Rating	Weight	1,7 m Swivel P/N	3 m Swivel P/N
SJS-5/3	6.1/2" – 9.5/8"	660 500-Y-BC*	5 ton	30 kg (66 lbs)	660 512	660 513
SJS-5/4	9.5/8" – 12.3/4"	660 520-Y-BC*	5 ton	38 kg (84 lbs)	660 512	660 513
SJS-5/5	13" – 16"	660 540-Y-BC*	5 ton	56 kg (123 lbs)	660 512	660 513
SJS-6/6	16.3/4" – 20"	660 600-Y-BC*	6 ton	66 kg (146 lbs)	660 612	660 614
SJS-6/8	22" – 30"	660 640-Y-BC*	6 ton	155 kg (342 lbs)	660 612	660 614
SJS-6/9	30" – 36"	660 660-Y-BC*	6 ton	156 kg (344 lbs)	660 612	660 614
SJS-6/10	36" – 42"	660 680-Y-BC*	6 ton	178 kg (393 lbs)	660 614	660 614

SJ SERIES

Range	P/N	Load Rating	Weight	Notes
2.3/8" – 5.1/2"	E39-039-BC*	5 ton	26 kg (58 lbs)	
2.3/8" – 5.1/2"	E39-039-01-BC*	5 ton	26 kg (58 lbs)	News Latch Lock
5.3/4" – 7.5/8"	E39-040-BC*	5 ton	33 kg (73 lbs)	
8" – 10.3/4"	E39-041-BC*	5 ton	40 kg (89 lbs)	
10.3/4" – 13.3/8"	E39-042-BC*	5 ton	59 kg (130 lbs)	
14" – 20"	E39-043-BC*	5 ton	115 kg (253 lbs)	
14" – 20"	E39-143-BC*	10 ton	115 kg (253 lbs)	
2.3/8" – 3.1/2"	E39-200-BC*	5 ton	19 kg (42 lbs)	
4" – 5.3/4"	E39-210-BC*	5 ton	25 kg (56 lbs)	

HOISTING EQUIPMENT

Single Joint Elevators



SJ SERIES ELEVATOR



SJ SERIES

Type	Range	P/N	Load Rating	Weight	P/N Swivel
SJ-2/5	2.3/8" – 5.1/2"	650 200-Y	2,5 ton	19 kg (42 lbs)	650 312
SJ-3/1	3.1/2" – 7.3/4"	650 300-Y	3 ton	25 kg (55 lbs)	650 312

LSJ SERIES

Type	Range	P/N	Load Rating	Weight	Swivel P/N
LSJ-4/2	2.3/8" – 5.3/4"	660 440-Y-BC*	4 ton	18 kg (40 lbs)	660 412

SJD SERIES

Type	Range	P/N	Load Rating	Weight	Swivel P/N
SJD	2.7/8" – 5.7/8"	650 360-Y-BC*	6 ton	29 kg (64 lbs)	660 612
SJD	6.1/4" – 9"	650 380-Y-BC*	6 ton	40 kg (88 lbs)	660 612

Calculated sound pressure level: 82,5 dB(A)

SJ-2/5 – SLIP ASSEMBLY

SJ-3/1 – SLIP ASSEMBLY

Range	Load Rating	5° TBG P/N	12° TBG P/N	18° DP P/N	Load Rating	5° TBG P/N	12° TBG P/N	18° DP P/N
2.3/8"	2 ton	650 209	650 230	650 219	3 ton			650 418
2.7/8"	2 ton	650 210	650 231	650 220	3 ton			650 419
3.1/2"	2 ton	650 211	650 232	650 221	3 ton		650 411	650 420
4"	2 ton	650 212	650 233	650 222	3 ton		650 412	
4.1/2"	2 ton	650 213	650 234	650 223	3 ton	650 319	650 413	650 421
5"	2 ton	650 214			3 ton	650 316	650 414	
5.1/2"	2 ton	650 215			3 ton	650 317	650 415	650 425
5.7/8"					3 ton		650 417	650 422
6.5/8"					3 ton	650 313	650 416	
7"					3 ton	650 314		
7.5/8"					3 ton	650 315		
7.3/4"					3 ton	650 311		

*BC = Bore Code – see Page 84/85 column 1



3.1/2" TS-100



4.1/2" TS-100



Description:

FORUM TS-100 Tubing Spiders are manually operated spiders for use with tubing and casing. Pipe size ranges from 1" – 5.3/4" and load rated for 100 ton.

Features:

- Standard API 4" TPF
- Uses standard DU inserts (4.1/2" and 5.1/2" only)
- Removable hinge pin for easy installation

TS-100 SPIDERS

Type	Size	P/N	Weight	Load Rating
TS-100 Tubing Spider	3.1/2"	17-302-X	93 kg (206 lbs)	100 ton
TS-100 Tubing Spider	4.1/2"	18-451-X	93 kg (206 lbs)	100 ton
TS-100 Tubing Spider	5.1/2"	18-551-X	101 kg (222 lbs)	100 ton

TS-100 SLIPS

Type	Size	P/N	Weight	Load Rating	Notes
TS-100 Slip Assembly less Inserts	3.1/2"	17-301-X	23 kg (51 lbs)	100 ton	3.1/2" TS-100 Slip Sets require 9 Inserts
TS-100 Slip Assembly less Inserts	4.1/2"	18-452-X	27 kg (60 lbs)	100 ton	Use 4.1/2" DU Inserts (12 Inserts required)
TS-100 Slip Assembly less Inserts	5.1/2"	18-552-X	32 kg (70 lbs)	100 ton	Use 5.1/2" DU Inserts (12 Inserts required)
TS-100 Slip Assembly less Inserts	5.3/4"	18-522-S-X	31 kg (69 lbs)	100 ton	Use 5.1/2" DU Inserts (12 Inserts required)

TS-100 3.1/2" SLIP INSERTS

Size	P/N	Weight per Set
3.1/2"	21-101	4 kg (8 lbs)
3.3/8"	21-110	4 kg (9 lbs)
3.1/8"	21-102	5 kg (11 lbs)
2.7/8"	21-103	6 kg (13 lbs)
2.3/8"	21-104	8 kg (17 lbs)
2.1/16"	21-105	9 kg (19 lbs)
2"	21-111	9 kg (19 lbs)
1.1/2"	21-106	9 kg (20 lbs)
1.1/4"	21-107	10 kg (21 lbs)
1"	21-108	10 kg (23 lbs)
3/4"	21-109	11 kg (24 lbs)
3"	21-116	27 kg (12 lbs)
3.1/4"	21-118	5 kg (10 lbs)
1.3/4"	21-119	8 kg (18 lbs)
1.13/16"	21-115	10 kg (21 lbs)
1.9/16"	21-114	10 kg (22 lbs)
3.1/16"	21-112	5 kg (12 lbs)
2.5/8"	21-113	7 kg (15 lbs)

TS-100 5.3/4" SLIP INSERTS

Size	P/N	Weight per Set
5.1/2" x 5.3/4"	03-241	4 kg (9,5 lbs)



CONTROL UNIT

Description:

FORUM Multi-Control Panels can be used to operate hydraulic elevators, BackSaver® and most power slips. The Multi-Control Panel is designed to enhance safety during rig floor operations that require the use of slips and elevators by reducing the number of personnel required on the floor.

Features:

- Onboard filtration
- Integrated HPU available
- Lockout system available to prevent opening the elevator before the slips are set
- Integrated lifting points
- Cover to protect controls when not in use

CONTROL PANELS

P/N	HPU Equipped	Operates Hydraulic Backsavers	Operates XP-1000 Elevator	Operates Trigger Elevator	Weight
E100270		✓	✓	✓	174 kg (383 lbs)
E100270-01		✓	✓		165 kg (363 lbs)
E100270-02	✓	✓		✓	389 kg (858 lbs)
E100270-03	✓	✓	✓		383 kg (845 lbs)



B-500/1 ELEVATOR



B-500/1 SPIDER

Description:

FORUM Casing Elevator/Spiders are pneumatically and hydraulically operated power tools or manually operated units. The Casing Elevator/Spider is a tool designed for lifting tubulars, from light tubing to heavy wall casing. Pipe size ranges from 2.3/8" – 24.1/2" and load ratings from 250 up to 1000 ton.

Features:

- Link compatibility: 250 – 1250 ton
- Can be used as elevator or spider
- Manual lifting of Slips possible in case of power loss
- Load rating for lower ear available for V-models

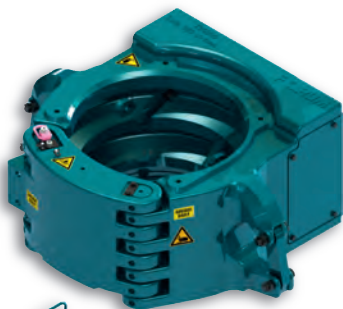
SLIP ASSEMBLY



ELEVATOR GUIDE PLATE



BODY



CASING GUIDE BELL ASSEMBLY

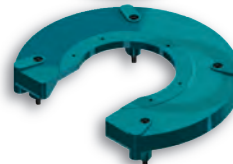


DRESSED AS ELEVATOR

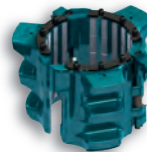
SPIDER GUIDE PLATE



UPPER GUARD ASSEMBLY



SLIP ASSEMBLY



BODY

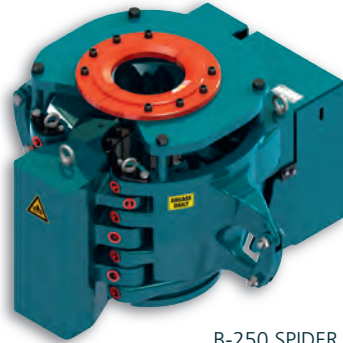


SPIDER ADAPTER PLATE



DRESSED AS SPIDER

Calculated sound pressure level: 82,5 dB(A)



B-250 SPIDER



B-250

Type	Range	P/N	Load Rating	Weight	Link Size
B-250 Air	2.3/8" – 7.5/8"	725 001-Y	250 ton	1080 kg (2381 lbs)	250 – 350
B-250 Man	2.3/8" – 7.5/8"	725 000-Y	250 ton	1170 kg (2580 lbs)	250 – 350

SLIP ASSEMBLIES

API Pipe Size	Slip Body Size	Slip Assembly c/w Inserts	Guide Plate Elevator	Guide Plate Spider	Load Rating
2.3/8"	3.1/2"	725 325-X	725 910	725 920	250 ton
2.7/8"		725 330-X	725 910	725 920	
3.1/2"		725 355-X	725 911	725 921	
3.1/2"	4.1/2"	725 340-X	725 911	752 921	250 ton
4"		725 350-X	725 911	725 921	
4.1/2"		725 360-X	725 912	725 922	
4.1/2"	5.1/2"	725 375-X	725 912	725 922	250 ton
5"		725 385-X	725 913	725 923	
5.1/2"		725 365-X	725 913	725 923	
6.5/8"	7.5/8"	725 390-X	725 914	725 924	250 ton
7"		725 380-X	725 914	725 924	
7.5/8"		725 370-X	725 915	725 925	
7.3/4"		725 395-X	725 915	725 925	

ACCESSORIES FOR ELEVATOR

Type	P/N
Casing Guide Bell	725 280
Air Hose 52"	752 822

ACCESSORIES FOR SPIDER

Type	P/N
Upper Guard	725 150
Spider Adapter Plate	725 500
Air Hose 26"	752 823

HOISTING EQUIPMENT

Elevator / Spider



V-350



V-350

Type	Range	P/N	Load Rating	Load Rating – Lower Ears	Weight	Link Size
V-350	4.1/2" – 14"	ES11776	350 ton	15 ton	1562 kg (3443 lbs)	250 – 500

SLIP ASSEMBLIES

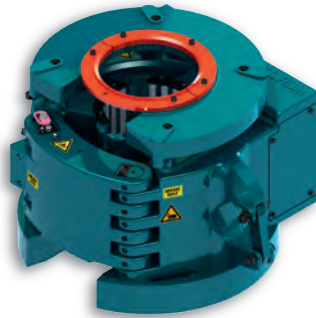
Casing Size	Slip Body Size	Slip Set P/N (w/ Inserts)	Spider Guide Plate Assembly P/N	Elevator Guide Plate Assembly P/N	Load Rating
4.1/2"	5.1/2"	ES11865	ES18419-1	ES11787	350 ton
5"		ES11864	ES18419-2	ES11788	
5.1/2"		ES11863	ES18419-3	ES11789	
6.5/8"	7.5/8"	ES11861	ES18419-4	ES11791	350 ton
7"		ES11860	ES18419-4	ES11791	
7.5/8"		ES11859	ES18419-5	ES11792	
7.3/4"		ES71592-1	ES18419-5	ES11792	
8.5/8"	9.5/8"	ES11857	ES18419-6	ES11793	350 ton
8.3/4"		ES71591-3	ES18419-6	ES11793	
9.5/8"		ES11856	ES18419-7	ES11794	
9.3/4"		ES71591-2	ES18419-15	ES71231	
9.7/8"		ES71591-1	ES18419-15	ES71231	
10.3/4"	11.3/4"	ES11854	ES18419-8	ES11795	350 ton
10.7/8"		ES71590-1	ES18419-8	ES11795	
11.3/4"		ES11853	ES18419-9	ES11796	
11.7/8"		ES71590-2	ES18419-9	ES11796	
12.3/4"	14"	ES70732-5	1035435-2	ES71229	350 ton
13.3/8"		ES70732-4	ES18419-10	ES11797	
13.1/2"		ES70732-3	ES18419-12	ES71228	
13.5/8"		ES70732-2	ES18419-12	ES71228	
14"		ES70732-1	ES18419-11	ES15939	

ACCESSORIES FOR 4.1/2" – 14" 350 TON ELEVATOR SPIDER

Description	P/N
Airline and Filter Assembly	ES11881
Guide Bell Assembly, Elevator	ES11798
Spider Adapter Plate	ES19276
Shackle Kit (for SJE attachment)	1047383

HOISTING EQUIPMENT

Elevator / Spider



B-350



B-350

Type	Range	P/N	Load Rating	Weight	Link Size
B-350 Air	4.1/2" – 14"	735 001-Y	350 ton	1751 kg (3860 lbs)	250 – 350
B-350 Man	4.1/2" – 14"	735 000-Y	350 ton	1751 kg (3860 lbs)	250 – 350

SLIP ASSEMBLIES

API Pipe Size	Slip Body Size	Slip Assembly c/w Inserts	Guide Plate Elevator	Guide Plate Spider	Load Rating
4.1/2"	5.1/2"	735 560-X	752 550	81138762	200 ton
5"		735 550-X	752 551	8ES18419-2	
5.1/2"		735 540-X	752 552	8ES18419-3	
6.5/8"	7.5/8"	735 530-2-X	752 553	8ES18419-4	350 ton
7"		735 500-2-X	752 553	8ES18419-4	
7.5/8"		735 490-2-X	752 554	8ES18419-5	
7.3/4"		735 485-2-X	752 554	8ES18419-5	
8.5/8"	9.5/8"	735 460-2-X	752 555	81138764	350 ton
9.5/8"		735 450-2-X	752 556	81138794	
9.5/8"	10.3/4"	735 445-2-X	752 556	81138794	350 ton
9.7/8"		735 440-2-X	752 557	81138797	
10.3/4"		735 430-2-X	752 558	81138740	
10.3/4"	11.3/4"	735 435-X	752 558	81138740	350 ton
11.3/4"		735 455-X	752 559	81138799	
11.7/8"		735 465-X	752 559	81138799	
12.3/4"	14"	735 375-2-X	752 560	81138802	350 ton
13.3/8"		735 380-2-X	752 561	81138741	
13.5/8"		735 385-2-X	752 561	81138741	
14"		735 390-2-X	752 562	81138806	

ACCESSORIES FOR ELEVATOR

Type	P/N
Casing Guide Bell	710 550
Air Hose 52.1/2"	752 822

ACCESSORIES FOR SPIDER

Type	P/N
Upper Guard	735 710
Spider Adapter Plate (for 37.1/2" RT)	752 765-1
Air Hose 26"	752 823

HOISTING EQUIPMENT

Elevator / Spider



V-500/1



V-500/1

Type	Range	P/N	Load Rating	Load Rating – Lower Ears	Weight	Link Size
V-500/1	4.1/2" – 14"	ES13800Y	500 ton	15 ton	2242 kg (4942 lbs)	500 – 1250

SLIP ASSEMBLIES

Casing Size	Slip Body Size	Slip Set P/N (w/ Inserts)	Spider Guide Plate Assembly P/N	Elevator Guide Plate Assembly P/N	Load Rating
4.1/2"	5.1/2"	ES13842Y3	ES18419-1	ES11787	500 ton
5"		ES13842Y2	ES18419-2	ES11788	
5.1/2"		ES13842Y1	ES18419-3	ES11789	
6.5/8"	7.5/8"	ES13841Y3	ES18419-4	ES11791	500 ton
7"		ES13841Y2	ES18419-4	ES11791	
7.5/8"		ES13841Y1	ES18419-5	ES11792	
7.3/4"		ES13841Y4	ES18419-5	ES11792	
8.5/8"	9.5/8"	ES13840Y3	ES18419-6	ES11793	500 ton
8.3/4"		ES13840Y5	ES18419-6	ES11793	
9.5/8"		ES13840Y1	ES18419-7	ES11794	
9.3/4"		ES13840Y4	ES18419-15	ES71231	
9.7/8"		ES13840Y2	ES18419-15	ES71231	
10.3/4"	11.3/4"	ES13839Y3	ES18419-8	ES11795	500 ton
10.7/8"		ES13839Y4	ES18419-8	ES11795	
11.3/4"		ES13839Y2	ES18419-9	ES11796	
11.7/8"		ES13839Y1	ES18419-9	ES11796	
12.3/4"	14"	ES70734Y7	1035435-2	ES71229	500 ton
13.3/8"		ES70734Y5	ES18419-10	ES11797	
13.1/2"		ES70734Y4	ES18419-12	ES71228	
13.5/8"		ES70734Y3	ES18419-12	ES71228	
14"		ES70734Y1	ES18419-11	ES15939	

ACCESSORIES FOR 4.1/2" – 14" 500 TON ELEVATOR SPIDER

Description	P/N
Airline and Filter Assembly	ES11881
Guide Bell Assembly, Elevator	ES11798
Spider Adapter Plate	ES19276
Shackle Kit (for SJE attachment)	1047383

HOISTING EQUIPMENT

Elevator / Spider



B-500/1 ELEVATOR



B-500/1 SPIDER



B-500

Type	Range	P/N	Load Rating	Weight	Link Size
B-500 Air	4.1/2" – 14"	752 001-Y	500 ton	2195 kg (4840 lbs)	500 – 750
B-500 Hydr.	4.1/2" – 14"	752 000-Y-H	500 ton	2093 kg (4615 lbs)	500 – 750
B-500 Hydr. VC Control	4.1/2" – 14"	752 000-Y-H -VC	500 ton	2093 kg (4615 lbs)	500 – 750

SLIP ASSEMBLIES

API Pipe Size	Slip Body Size	Slip Assembly c/w Inserts	Guide Plate Elevator	Guide Plate Spider	Load Rating
4.1/2"	5.1/2"	752 510-X	752 550	81138762	350 ton
5"		752 500-X	752 551	8ES18419-2	
5.1/2"		752 490-X	752 552	8ES18419-3	
6.5/8"	7.5/8"	752 480-2-X	752 553	8ES18419-4	500 ton
7"		752 470-2-X	752 553	8ES18419-4	
7.5/8"		752 460-2-X	752 554	8ES18419-5	
7.3/4"		752 465-2-X	752 554	8ES18419-5	
8.5/8"	9.5/8"	752 450-2-X	752 555	81138764	500 ton
9.5/8"		752 440-2-X	752 556	81138794	
9.5/8"	10.3/4"	752 360-2-X	752 556	81138794	500 ton
9.7/8"		752 370-2-X	752 557	81138797	
10.3/4"		752 350-2-X	752 558	81138740	
10.3/4"	11.3/4"	752 430-X	752 558	81138740	500 ton
11.3/4"		752 420-X	752 559	81138799	
11.7/8"		752 535-X	752 559	81138799	
12.3/4"	14"	752 375-2-X	752 560	81138802	500 ton
13.3/8"		752 380-2-X	752 561	81138741	
13.5/8"		752 385-2-X	752 561	81138741	
14"		752 390-2-X	752 562	81138806	

ACCESSORIES FOR ELEVATOR

Type	P/N
Casing Guide Bell	710 550
Air Hose 52.1/2"	752 822
Hydr. Hose 52.1/2"	710 082

ACCESSORIES FOR SPIDER

Type	P/N
Upper Guard	752 780
Spider Adapter Plate (for 37.1/2" RT)	752 765-1
Air Hose 26"	752 823
Hydr. Hose 26"	710 083

HOISTING EQUIPMENT

Elevator / Spider



V-500/2



V-500/2

Type	Range	P/N	Load Rating	Load Rating – Lower Ears	Weight	Link Size
V-500/2	16" – 24.1/2"	ES15740Y	500 ton	15 ton	3708 kg (8174 lbs)	500 – 1250

SLIP ASSEMBLIES

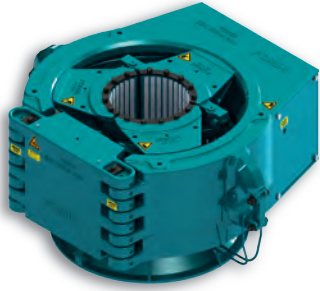
Casing Size	Slip Body Size	Slip Set P/N (w/ Inserts)	Spider Guide Plate Assembly P/N	Elevator Guide Plate Assembly P/N	Load Rating
16"	16"	ES15790Y4	ES73138	ES16184	500 ton
17"	17"	ES15790Y7	ES50006198	ES50006199	500 ton
18"	18.5/8"	ES15790Y6	ES71139-6	ES15794-6	500 ton
18.5/8"		ES15790Y3	ES73137	ES15794	
18.5/8"	20"	ES15790Y26	ES73137	ES15794	500 ton
20"		ES15790Y2	ES73136	ES15793	
22"	22"	ES15790Y5	ES50006074	ES50006055	500 ton
24"	24"	ES15790Y1	ES73135	ES15792	500 ton
24.1/2"	24.1/2"	ES75226Y1	ES74817	ES74818	500 ton

ACCESSORIES FOR 16" – 24.1/2" 500 TON ELEVATOR SPIDER

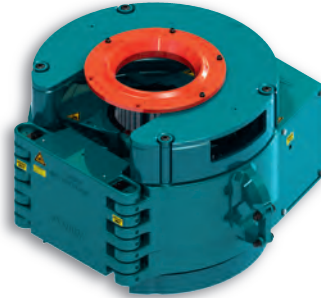
Description	P/N
Airline and Filter Assembly	ES11881
Guide Bell Assembly, Elevator	ES19001
Spider Adapter Plate	ES16552
Shackle Kit (for SJE attachment)	1047383

HOISTING EQUIPMENT

Elevator / Spider



B-500/2 ELEVATOR



B-500/2 SPIDER



B-500/2

Type	Range	P/N	Load Rating	Weight	Link Size
B-500/2 Air	14" – 24.1/2"	753 001-Y	500 ton	3611 kg (7960 lbs)	500 – 750
B-500/2 Hydr.	14" – 24.1/2"	753 000-Y-H	500 ton	3611 kg (7960 lbs)	500 – 750
B-500/2 Hydr. VC Control	14" – 24.1/2"	753 000-Y-H-VC	500 ton	3611 kg (7960 lbs)	500 – 750

SLIP ASSEMBLIES

API Pipe Size	Slip Body Size	Slip Assembly c/w Inserts	Guide Plate Elevator	Guide Plate Spider	Load Rating
12.3/4"	14"	753 400-X	753 950	81138842	500 ton
13.3/8"		753 410-X	753 951	81138850	
13.5/8"		753 420-X	753 951	81138850	
14"		753 430-X	753 952	81138851	
14.3/8"	15"	753 445-X	753 953	753 728	500 ton
14.3/4"	16"	753 415-X	753 953	753 728	500 ton
16"		753 440-X	753 954	8ES73138	
16.3/4"	18"	753 465-X	753 466	753 467	500 ton
17"		753 475-X	753 955	753 775	
18"		753 455-X	753 956	8ES71139-6	
18.5/8"	20"	753 450-X	753 957	8ES73137	500 ton
20"		753 460-X	753 958	81138832	
22"	22"	753 470-X	753 959	81138853	500 ton
24"	24"	753 480-X	753 960	8ES73135	500 ton
24"	24.1/2"	753 495-X	753 960	8ES74817	500 ton
24.1/2"		753 490-X	753 960	8ES74817	

ACCESSORIES FOR ELEVATOR

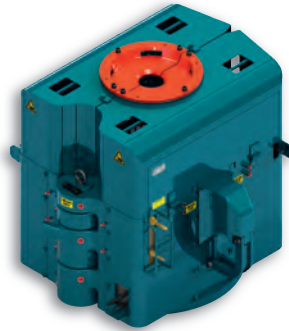
Type	P/N
Casing Guide Bell	712 500
Air Hose 52.1/2"	752 822
Hydr. Hose 52.1/2"	710 082

ACCESSORIES FOR SPIDER

Type	P/N
Upper Guard	753 770
Spider Adapter Plate (for 49.1/2" RT)	753 765
Air Hose 26"	752 823
Hydr. Hose 26"	710 083

HOISTING EQUIPMENT

Elevator / Spider



B-750/1 SPIDER



B-750/1 / B-1000/1

Type	Range	P/N	Load Rating	Weight	Link Size
B-750/1 Air	4.1/2" – 14"	7100 00-Y-A	750 ton	4550 kg (10031 lbs)	750 – 1000
B-750/1 Hydr.	4.1/2" – 14"	7100 00-Y-H	750 ton	4550 kg (10031 lbs)	750 – 1000
B-750/1 Hydr. VC Control	4.1/2" – 14"	7100 00-Y-H-VC	750 ton	4550 kg (10031 lbs)	750 – 1000
B-1000/1 Air	4.1/2" – 14"	711 000-Y-A	1000 ton	4550 kg (10031 lbs)	750 – 1000
B-1000/1 Hydr.	4.1/2" – 14"	711 000-Y-H	1000 ton	4550 kg (10031 lbs)	750 – 1000
B-1000/1 Hydr. VC Control	4.1/2" – 14"	711 000-Y-H-VC	1000 ton	4550 kg (10031 lbs)	750 – 1000

SLIP ASSEMBLIES

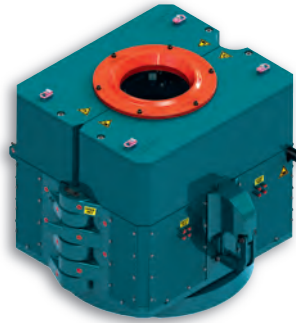
API Pipe Size	Slip Body Size	Slip Assembly c/w Inserts	Guide Plate Elevator	Guide Plate Spider	Load Rating
4.1/2"	5.1/2"	710 100-221-X	711 034	81138762	500 ton
5"		710 100-223-X	711 051	8ES18419-2	
5.1/2"		710 100-224-X	711 049	8ES18419-3	
6.5/8"	7.5/8"	710 100-228-X	711 047	8ES18419-4	750 ton
7"		710 100-229-X	711 047	8ES18419-4	
7.5/8"		710 100-231-X	711 048	8ES18419-5	
7.3/4"		710 100-269-X	711 048	8ES18419-5	
8.5/8"	9.5/8"	710 100-234-X	711 050	81138764	1000 ton
9.5/8"		710 100-236-X	711 042	81138794	
9.5/8"	10.3/4"	710 100-236-1-X	711 042	81138794	1000 ton
9.7/8"		710 100-265-X	711 045	81138797	
10.3/4"		710 100-238-1-X	711 052	81138740	
10.3/4"	11.3/4"	710 100-238-X	711 052	81138740	1000 ton
11.3/4"		710 100-239-X	711 054	81138799	
11.7/8"		710 100-262-X	711 054	81138799	
12.3/4"	14"	710 100-241-X	711 053	81138802	1000 ton
13.3/8"		710 100-243-X	711 055	81138741	
13.5/8"		710 100-259-X	711 055	81138741	
14"		710 100-255-X	711 059	81138806	

ACCESSORIES FOR ELEVATOR

Type	P/N
Casing Guide Bell	710 550
Air Hose 52.1/2"	752 822
Hydr. Hose 52.1/2"	710 082

ACCESSORIES FOR SPIDER

Type	P/N
Spider Adapter Plate (for 37.1/2" RT)	752 765-1
Air Hose 26"	752 823
Hydr. Hose 26"	710 083



B-750/2 SPIDER



B-750/2 / B-1000/2

Type	Range	P/N	Load Rating	Weight	Link Size
B-750/2 Air	16" – 24"	712 000-Y-A	750 ton	6251 kg (13780 lbs)	750 – 1000
B-750/2 Hydr.	16" – 24"	712 000-Y-H	750 ton	6251 kg (13780 lbs)	750 – 1000
B-750/2 Hydr. VC Control	16" – 24"	712 000-Y-H-VC	750 ton	6251 kg (13780 lbs)	750 – 1000
B-1000/2 Air	16" – 24"	713 000-Y-A	1000 ton	6251 kg (13780 lbs)	750 – 1000
B-1000/2 Hydr.	16" – 24"	713 000-Y-H	1000 ton	6251 kg (13780 lbs)	750 – 1000
B-1000/2 Hydr. VC Control	16" – 24"	713 000-Y-H-VC	1000 ton	6251 kg (13780 lbs)	750 – 1000

SLIP ASSEMBLIES

API Pipe Size	Slip Body Size	Slip Assembly c/w Inserts	Guide Plate Elevator	Guide Plate Spider	Load Rating
16"	17"	712 100-245-X	712 141	8ES73138	750 ton
18.5/8"	20"	712 100-248-X	712 144	8ES73137	750 ton
20"		712 100-249-X	712 145	81138832	
22"	22"	712 100-261-X	712 146	81138853	750 ton
24"	24"	712 100-254-X	712 147	8ES73135	750 ton

ACCESSORIES FOR ELEVATOR

Type	P/N
Casing Guide Bell	712 500
Air Hose 52.1/2"	752 822
Hydr. Hose 52.1/2"	710 082

ACCESSORIES FOR SPIDER

Type	P/N
Spider Adapter Plate (for 49.1/2" RT)	753 765
Air Hose 26"	752 823
Hydr. Hose 26"	710 083

RIG FLOOR EQUIPMENT

Flush Mounted Slip – FMS-500



FMS-500



FMS-500 FOR CABLE PENETRATION



Description:

FORUM FMS-500 Flush Mounted Slip is designed to handle casings and to be installed into 37.1/2" Rotary Tables.

Features:

- Flush mount design eliminates the need for work platforms
- Pipe sizes from 4.1/2" – 14"
- 500 ton load rating
- B-Type Slip Assembly and Guide Plate can be used with the FMS-500
- Various adapters for National, Emsco and Wirth Rotary Tables available
- Optionally available with Top Cover for cable penetration

FLUSH MOUNTED SLIP (FMS)

	Type	Type
	FMS-500 Hydraulic Version	FMS-500 Pneumatic Version
Pipe Size	4.1/2" – 14"	4.1/2" – 14"
Load Rating	500 ton	500 ton
P/N	754 000-RT*	754 000-RT*-AIR
Stand Alone Control Unit	737 160	
Hook Up Kit	754 000-HUK	754 000-HUK
Cover Plate for Cable Penetration	754 020-CP	754 020-CP

SLIP ASSEMBLIES

API Pipe Size	Slip Body Size	Slip Assembly c/w Inserts	Guide Plate Spider	Guide Plate Cable Penetration	Load Rating
4.1/2"	5.1/2"	752 510-X	81138762	on request	350 ton
5"	5.1/2"	752 500-X	8ES18419-2	8ES18419-2-S	350 ton
5.1/2"	5.1/2"	752 490-X	8ES18419-3	8ES18419-3-S	350 ton
6.5/8"	7.5/8"	752 480-2-X	8ES18419-4	8ES18419-4-S	500 ton
7"	7.5/8"	752 470-2-X	8ES18419-4	8ES18419-4-S	500 ton
7.5/8"	7.5/8"	752 460-2-X	8ES18419-5	8ES18419-5-S	500 ton
7.3/4"	7.5/8"	752 465-2-X	8ES18419-5	8ES18419-5-S	500 ton
8.5/8"	9.5/8"	752 450-2-X	81138764	8ES18419-6-S	500 ton
9.5/8"	9.5/8"	752 440-2-X	81138794	8ES18419-7-S	500 ton
9.5/8"	10.3/4"	752 360-2-X	81138794	8ES18419-7-S	500 ton
9.7/8"	10.3/4"	752 370-2-X	81138797	upon request	500 ton
10.3/4"	10.3/4"	752 350-2-X	81138740	8ES18419-8-S	500 ton
11.3/4"	11.3/4"	752 420-X	81138799	8ES18419-9-S	500 ton
11.7/8"	11.3/4"	752 535-X	81138799	8ES18419-9-S	500 ton
12.3/4"	14"	752 375-2-X	81138802	upon request	500 ton
13.3/8"	14"	752 380-2-X	81138741	upon request	500 ton
13.5/8"	14"	752 385-2-X	81138741	upon request	500 ton
14"	14"	752 390-2-X	81138806	upon request	500 ton

HOISTING EQUIPMENT

Power Slip Elevator – PSE-1000



PSE-1000



Description:

FORUM PSE-1000 Power Slip Elevator is designed for lifting long, heavy tubulars from 2.3/8" to 22" and a capacity up to 1000 ton.

Features:

- Slip Assemblies and Insert Carriers interchangeable with PS-750/2 and PS-1000 Power Slip
- Only one frame needed to handle 2.3/8" – 22"

POWER SLIP ELEVATOR – PSE-1000

Type	P/N
PSE-1000	631 000-Y-BV-VC
Slip Assembly for 2.3/8" – 14"	776 120-1-X
Slip Assembly for 14.3/4" – 20"	776 120-2-X
Slip Assembly for 22"	776 120-3-X
Hook Up Kit	757 101-HUK-E
Hydraulic Power Unit	757 150
Control Units	2649-10
	754 003-3

Calculated sound pressure level: 69,9 dB(A)

(For Slip Assemblies and Guide Plates please see page 47)

RIG FLOOR EQUIPMENT

Hydraulic Operated Power Slips



PS-500



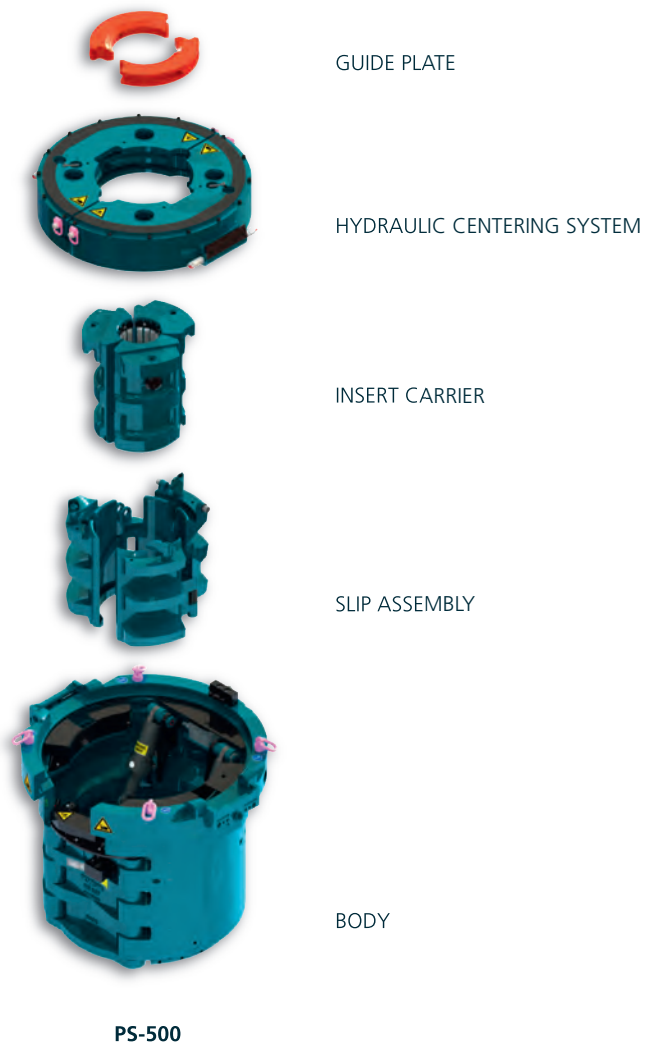
PS-500 FOR CABLE PENETRATION



Description:

FORUM Power Slips are designed for handling long, heavy tubulars from 2.3/8" to 22" and a capacity of 350 up to 1250 ton while installed in the Rotary Table.

Various adapters for different Rotary Table sizes and types are available (see page 66). The Power Slip is equipped with a central greasing system and a hydraulic feedback for „Slips up“ and „Slips down“.





PS-350



Description:

Forum PS-350 Power Slip* is designed for handling vertical drill strings from 2.3/8" to 14" with a total weight of up to 350 ton and can be used in all common 27.1/2" Rotary Tables.

Features:

- Top guide system
- Off-the-shelf inserts
- Patented clamping system
- Feedback „Slips down“
- Quick change of carrier assembly during operation
- Various adapters available



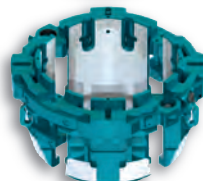
GUIDE PLATE



UPPER RING



SLIP ASSEMBLY



CARRIER ASSEMBLY



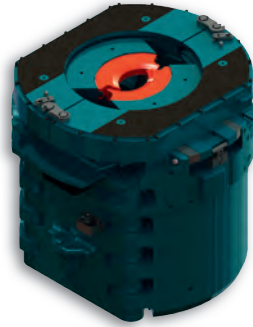
BODY

PS-350

*Patented

RIG FLOOR EQUIPMENT

Hydraulic Operated Power Slips



PS-750/2



PS HYDRAULIC OPERATED POWER SLIPS

Type	P/N	Size	Load Rating	Rotary Table Size
PS-500	757 000-RT*	2.3/8" – 14"	500 ton	37.1/2"
PS-500 for cable penetration	757 500-N-F	2.3/8" – 14"	500 ton	37.1/2"
PS-750/2	776 100-RT*	2.3/8" – 22"	750 ton	49.1/2"
PS-1000	772 000-RT*	2.3/8" – 22"	1000 ton	49.1/2"
PS-1250	774 000-RT*	3.1/2" – 14"	1250 ton	49.1/2"

Accessory Tools	PS-500	PS-750/2	PS-1000	PS-1250
Hook Up Kit	757 000-HUK	776 100-HUK	776 100-HUK	774 000-HUK
Compact hydraulic Power Unit, air operated	757 150	757 150	757 150	n/a
Control Unit PS	757 109	757 109	757 109	757 109
Control Unit PS stand alone	757 160	757 160	757 160	757 160
Control Unit Grease System 230 V AC zone 1	755 105-11	755 105-11	755 105-11	755 105-11
Control Unit Grease System 24 V DC zone 1	755 105-12	755 105-12	755 105-12	755 105-12

Slip Assemblies (for Insert Carriers please see next pages)	PS-500	PS-750/2	PS-1000	PS-1250
Slip Assembly 2.3/8" – 14"	757 020-X	776 120-1-X	776 120-1-X	
Slip Assembly 14.3/4" – 20"		776 120-2-X	776 120-2-X	
Slip Assembly 22"		776 120-3-X	776 120-3-X	
Slip Assembly 3.1/2" – 14"				774 020-X

Optional Equipment	PS-500	PS-750/2	PS-1000	PS-1250
Hand Slip Insert Bowl No. 3 2.3/8" – 8.5/8" for manual slip handling	755 820-X			
Hand Slip Top Bowl 200 tons 11.3/4" for manual slip handling	553 600-X	553 600-X	553 600-X	
Reducing Bushing 9.5/8" – 10.3/4"	553 610-X	553 610-X	553 610-X	
Reducing Bushing 2.3/8" – 8.5/8"	553 611-X	553 611-X	553 611-X	
Top Wear Guide System	776 750	776 750**	776 750**	776 750
Wear Guide 6.5/8"	776 751	776 751	776 751	776 751
Wear Guide 5.7/8"	776 752	776 752	776 752	776 752
Multi Coupling Kit	756 850	776 800	776 800	n/a
Pipe Wiper System (fits standard 19" Dual Type Wipers)	756 750	775 990	775 990	774 930
Wiper Adapter				
Bit Breaker Plate	553 455**	553 455**	553 455**	553 455**

Calculated sound pressure level: 69,9 dB(A)

RIG FLOOR EQUIPMENT

Power Slip – PS-350

PS-350 POWER SLIP FOR 27.1/2" RT – 350 TON 2.3/8" – 14"

Dimensions	Width: 30" / 760 mm	Height: 34,64" / 880 mm	Height over RT: 4" / 102 mm
Weight	PS w/o slip assy 1090 kg (2403 lbs) complete assembly for 9.5/8" 350 kg (771 lbs)		
Rating PS	Pipe Size	2.3/8" up to 14"	
	Pipe Weight	max. 350 ton	
Working Pressure	Hydraulic Flow Rate	min. 5 gal/min, max. 10 gal/min	
	Hydraulic connections	On top of the Power Slip	
Guide Plates	Top Guide Plate	Available for all Pipe Sizes	

PS-350

Type	P/N
PS-350	737 000
Hook Up Kit	737 007-HUK
Control Unit	754 003-3
Stand Alone Control Unit	737 160

CARRIER ASSEMBLIES

API Pipe Size	Pipe Type	Carrier Body Size	Carrier Assembly c/w inserts	Guide Plate Casing	Guide Plate DP, DC, TBG	Load Rating
2.3/8"	DP, TBG	2.7/8"	737670-101-X		81153584	65
2.7/8"	DP, TBG		737670-103-X		81153584	65
3.1/2"	DP, TBG, CSG	4.1/2"	737670-105-X		81150653	250
4"	DP, TBG, CSG		737670-106-X		81150653	250
4.1/2"	DP, TBG, CSG		737670-107-X	81138762		250
5"	DP, CSG	5.1/2"	737670-109-X	8ES18419-2	81150655	350
5.1/2"	DP, CSG		737670-111-X	8ES18419-3	81150657	350
5.7/8"	DP, CSG	7"	737670-115-X		81150657	350
6.5/8"	DP, CSG		737670-228-X	8ES18419- 4	81150659	350
7"	CSG		737670-229-X	8ES18419- 4		350
7.3/4"	CSG	7.3/4"	737670-269-X	8ES18419-5		350
7.5/8"	CSG	7.5/8"	737670-231-X	8ES18419-5		350
8.5/8"	CSG	9.5/8"	737670-234-X	81138764		350
9.5/8"	CSG		737670-236-X	81138794		350
10"	CSG	10.3/4"	737670-237-X			350
10.3/4"	CSG		737670-238-X	81138740		350
11.3/4"	CSG	12.3/4"	737670-239-X	81138799		350
11.7/8"	CSG		737670-262-X	81138806		350
12.3/4"	CSG		737670-241-X	81138802		350
13.3/8"	CSG	14"	737670-243-X	81138741		350
13.5/8"	CSG		737670-259-X	81138741		350
14"	CSG		737670-255-X			350

Calculated sound pressure level: 69,9 dB(A)

RIG FLOOR EQUIPMENT

Hydraulic Operated Power Slips

PS-500

Carrier for Drill Pipe

API Pipe Size	Carrier Body Size	Carrier Assembly c/w Inserts	Hydraulic Guide Plate	Guide Plate for cable penetration	Load Rating
2.3/8"	3.1/2"	756 670-101-X	756 473	757 565	250 ton
2.7/8"		756 670-103-X	756 473	757 565	250 ton
3.1/2"		756 670-105-X	756 474	757 564	250 ton
3.1/2"	4.1/2"	756 670-105-1-X	756 474	757 564	350 ton
4"		756 670-106-X	756 474	757 563	350 ton
4.1/2"		756 670-107-X	756 475	757 562	350 ton
4.1/2"	5.1/2"	756 670-107-1-X	756 476	757 562	500 ton
5"		756 670-109-X	756 476	757 562	500 ton
5.1/2"		756 670-111-X	756 476	757 559	500 ton
5.7/8"	7"	756 670-115-X	756 421	upon request	500 ton
6.5/8"		756 670-114-X	756 424	757 560	500 ton
6.906"		756 670-112-X	756 422	757 558	500 ton
6.906"	7.5/8"	756 670-112-1-X	756 422	757 558	500 ton

Carrier for Casing

API Pipe Size	Carrier Body Size	Carrier Assembly c/w Inserts	Hydraulic Guide Plate	Guide Plate for cable penetration	Load Rating
6.5/8"	7.5/8"	756 670-228-X	756 422	757 558	500 ton
7"	7"	756 670-229-1-X	756 422	757 558	500 ton
7"		756 670-229-X	756 422	757 558	500 ton
7.5/8"	7.5/8"	756 670-231-X	756 422	757 558	500 ton
7.3/4"		756 670-269-X	upon request	upon request	500 ton
8"	8.1/2"	756 670-232-X	756 422	upon request	500 ton
8.5/8"	9.5/8"	756 670-234-X	756 425	757 557	500 ton
9.5/8"		756 670-236-X	756 423	757 556	500 ton
9.5/8"	10.3/4"	756 670-236-1-X	756 423	757 556	500 ton
9.7/8"		756 670-265-X	756 477	upon request	500 ton
10"		756 670-237-X	756 477	upon request	500 ton
10.3/4"	12.3/4"	756 670-238-X	756 426	757 554	500 ton
11.3/4"		756 670-239-X	756 427	upon request	500 ton
11.7/8"		756 670-262-X	756 427	upon request	500 ton
12.3/4"	14"	756 670-241-X	756 471	upon request	500 ton
12.3/4"		756 670-241-1-X	756 471	upon request	500 ton
13.3/8"		756 670-243-X	756 472	757 551	500 ton
13.1/2"	14"	756 670-270-X	756 428	upon request	500 ton
13.5/8"		756 670-259-X	756 428	upon request	500 ton
14"		756 670-255-X	756 428	upon request	500 ton

Carrier for Drill Collar with ZIP Groove

API Pipe Size	Carrier Body Size	Carrier Assembly c/w Inserts	Hydraulic Guide Plate	Guide Plate for cable penetration	Load Rating
4.3/4"	4.1/2"	756 690-182-X	756 420	757 561	150 ton
5.1/4"	5.1/2"	756 690-183-X	757 421	upon request	150 ton
6.1/4"		756 690-187-X	757 421	upon request	150 ton
6.1/2"	6.3/4"	756 690-188-X	757 424	757 560	150 ton
6.3/4"		756 690-189-X	757 424	757 560	150 ton
7"		756 690-190-X	756 422	upon request	150 ton
8"	8.1/2"	756 690-194-X	756 422	upon request	150 ton
8.1/4"		756 690-195-X	756 425	757 557	150 ton
8.1/2"		756 690-196-X	756 425	757 557	150 ton
8.3/4"	9.1/2"	756 690-197-X	756 423	757 556	150 ton
9"		756 690-198-X	756 423	757 556	150 ton
9.1/2"		756 690-199-X	756 423	757 556	150 ton
9.3/4"	9.1/2"	756 690-203-X	756 423	upon request	150 ton
10"		756 690-202-X	756 423	upon request	150 ton

Carrier for Drill Collar without ZIP Groove

API Pipe Size	Carrier Body Size	Carrier Assembly c/w Inserts	Hydraulic Guide Plate	Guide Plate for cable penetration	Load Rating
3.1/8"	3.1/2"	756 690-308-X	756 476	upon request	150 ton
3.3/8"		756 690-309-X	upon request	upon request	150 ton
4.3/4"	5.1/2"	756 690-276-X	756 420	757 561	150 ton
6.1/4"	6.3/4"	756 690-284-X	756 421	upon request	150 ton
6.1/2"		756 690-286-X	756 424	757 560	150 ton
6.3/4"		756 690-287-X	756 424	757 560	150 ton
8"	8.1/2"	756 690-293-X	756 422	upon request	150 ton
8.1/4"		756 690-295-X	756 425	upon request	150 ton
8.1/2"		756 690-296-X	756 425	upon request	150 ton
9"	9.1/2"	756 690-297-X	756 423	757 556	150 ton
9.1/2"		756 690-298-X	756 423	757 556	150 ton

RIG FLOOR EQUIPMENT

Hydraulic Operated Power Slips

PS-750/2 + PS-1000

Carrier for Drill Pipe

API Pipe Size	Carrier Body Size	Carrier Assembly c/w Inserts	Hydraulic Guide Plate	Guide Plate for cable penetration	Load Rating
2.3/8"	3.1/2"	775 670-101-X	756 473	757 565	250 ton
2.7/8"		775 670-103-X	756 473	757 565	250 ton
3.1/2"		775 670-105-X	756 474	757 564	250 ton
3.1/2"	4.1/2"	775 670-105-1-X	756 474	757 564	500 ton
4"		775 670-106-X	756 475	757 563	500 ton
4.1/2"		775 670-107-X	756 476	757 562	500 ton
4.1/2"	5.1/2"	775 670-107-1-X	756 476	757 562	750 ton
5"		775 670-109-X	756 476	757 562	750 ton
5.1/2"		775 670-111-X	756 470	757 559	750 ton
5.7/8"	7"	775 670-115-X	756 421	upon request	1000 ton
6.5/8"		775 670-114-X	756 424	757 560	1000 ton
6.906"		775 670-112-X	756 422	757 558	1000 ton
6.906"		7.5/8"	775 670-112-1-X	756 422	757 558

Carrier for Casing

API Pipe Size	Carrier Body Size	Carrier Assembly c/w Inserts	Hydraulic Guide Plate	Guide Plate for cable penetration	Load Rating
6.5/8"	7.5/8"	775 670-228-X	756 422	757 558	1000 ton
7"	7"	775 670-229-1-X	756 422	757 558	1000 ton
7"		775 670-229-X	756 422	757 558	1000 ton
7.5/8"	7.5/8"	775 670-231-X	756 422	757 558	1000 ton
7.3/4"		775 670-269-X	756 422	upon request	1000 ton
8.5/8"	9.5/8"	775 670-234	756 425	757 557	1000 ton
9.5/8"		775 670-236-X	756 423	757 556	1000 ton
9.3/8"	10.3/4"	775 670-312-X	756 423	upon request	1000 ton
9.5/8"		775 670-236-1-X	756 423	upon request	1000 ton
9.7/8"		775 670-265-X	756 477	upon request	1000 ton
10"		775 670-237-X	756 477	upon request	1000 ton
10.3/4"	12.3/4"	775 670-238-X	756 426	757 554	1000 ton
11.3/4"		775 670-239-X	756 427	upon request	1000 ton
11.7/8"		775 670-262-X	756 427	upon request	1000 ton
12.3/4"		775 670-241-X	756 471	upon request	1000 ton
12.3/4"	14"	775 670-241-1-X	756 471	upon request	1000 ton
13.3/8"		775 670-243-X	756 472	757 551	1000 ton
13.1/2"		775 670-270-X	756 428	upon request	1000 ton
13.5/8"		775 670-259-X	756 428	upon request	1000 ton
14"	16"	775 670-255-X	756 428	upon request	1000 ton
16"		775 630-245-X	775 459	upon request	1000 ton
17"		775 630-267-X	775 454	upon request	1000 ton
18"		18.5/8"	775 630-247-X	775 456	upon request
18.5/8"	20"	775 630-248-X	775 451	upon request	1000 ton
20"		775 630-249-X	775 457	upon request	1000 ton

Carrier for Drill Collar with ZIP Groove

API Pipe Size	Carrier Body Size	Carrier Assembly c/w Inserts	Hydraulic Guide Plate	Guide Plate for cable penetration	Load Rating
4.3/4"	4.1/2"	775 690-182-X	756 420	757 561	150 ton
5.1/4"	5.1/2"	775 690-183-X	756 421	upon request	150 ton
6.1/4"		775 690-187-X	756 421	upon request	150 ton
6.1/2"	6.3/4"	775 690-188-X	756 424	757 560	150 ton
6.3/4"		775 690-189-X	756 424	757 560	150 ton
7"	8.1/2"	775 690-190-X	756 422	upon request	150 ton
8"		775 690-194-X	756 422	upon request	150 ton
8.1/4"		756 690-195-X	756 425	757 557	150 ton
8.1/2"		775 690-196-X	756 425	757 557	150 ton
8.3/4"	9.1/2"	775 690-197-X	756 423	757 556	150 ton
9"		775 690-198-X	756 423	757 556	150 ton
9.1/2"		775 690-199-X	756 423	757 556	150 ton
9.3/4"		775 690-203-X	756 423	upon request	150 ton

Carrier for Drill Collar without ZIP Groove

API Pipe Size	Carrier Body Size	Carrier Assembly c/w Inserts	Hydraulic Guide Plate	Guide Plate for cable penetration	Load Rating
3.1/8"	3.1/2"	775 650-308-X	756 476	upon request	150 ton
4.3/4"	5.1/2"	775 650-276-X	756 420	757 561	150 ton
6.1/4"		775 650-284-X	756 421	upon request	150 ton
6.1/2"	6.3/4"	775 650-286-X	756 424	757 560	150 ton
6.3/4"		775 650-287-X	756 424	757 560	150 ton
8"	8.1/2"	775 650-293-X	756 422	upon request	150 ton
8.1/4"		775 650-295-X	756 425	upon request	150 ton
8.1/2"		775 650-296-X	756 425	upon request	150 ton
9"		9.1/2"	775 650-297-X	756 423	757 556
9.1/2"	775 650-298-X		756 423	757 556	150 ton

RIG FLOOR EQUIPMENT

Power Slip – PS-1250

PS-1250

Insert Slip

API Pipe Size	Insert Slip Body Size	Insert Slip Assembly c/w Inserts	Top Guide Plate	Bottom Guide Plate	Load Rating
6.5/8" (6,906 inch)	7"	774 060-112-X	774 815	774 915	1250 ton

Carrier for Drill Pipe

API Pipe Size	Carrier Body Size	Carrier Assembly c/w Inserts	Top Guide Plate	Bottom Guide Plate	Load Rating
3.1/2"	3.1/2"	774 070-105-X	774 805	774 905	250 ton
3.1/2"	4.1/2"	774 070-105-1-X	774 805	774 905	500 ton
4"		774 070-106-X	774 806	774 906	500 ton
4.1/2"	5.1/2"	774 070-107-X	774 807	774 907	500 ton
4.1/2"		774 070-107-1-X	774 807	774 907	750 ton
5"		774 070-109-X	774 809	774 909	750 ton
5.1/2"	7"	774 070-111-X	774 811	774 911	750 ton
5.7/8"		774 070-115-X	774 812	774 912	1000 ton
6.5/8"		774 070-114-X	774 815	774 915	1000 ton

Carrier for Casing

API Pipe Size	Carrier Body Size	Carrier Assembly c/w Inserts	Top Guide Plate	Bottom Guide Plate	Load Rating
6.5/8"	7.5/8"	774 070-228-X	774 815	774 915	1250 ton
7"	7"	774 070-229-1-X	774 815	774 915	1000 ton
7"		774 070-229-X	774 815	774 915	1250 ton
7.5/8"	7.5/8"	774 070-231-X	774 819	774 919	1250 ton
7.3/4"		774 070-269-X	774 819	774 919	1250 ton
8.5/8"		774 070-234-X	774 824	774 924	1250 ton
9.5/8"	9.5/8"	774 070-236-X	774 827	774 927	1250 ton
9.5/8"		774 070-236-1-X	774 827	774 927	1250 ton
9.7/8"		774 070-265-X	774 827	774 927	1250 ton
10"	10.3/4"	774 070-237-X	774 827	774 927	1250 ton
10.3/4"		774 070-238-X	774 832	774 932	1250 ton
11.3/4"	12.3/4"	774 070-239-X	774 833	774 933	1250 ton
11.7/8"		774 070-262-X	774 833	774 933	1250 ton
12.3/4"		774 070-241-X	774 835	774 935	1250 ton
12.3/4"		774 070-241-1-X	774 835	774 935	1250 ton
13.3/8"	14"	774 070-243-X	774 836	774 936	1250 ton
13.1/2"		774 070-270-X	774 836	774 936	1250 ton
13.5/8"		774 070-259-X	774 836	774 936	1250 ton
14"		774 070-255-X	774 839	774 939	1250 ton

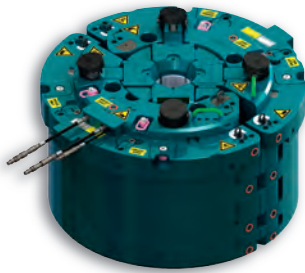
Carrier for Drill Collar with ZIP Groove

API Pipe Size	Carrier Body Size	Carrier Assembly c/w Inserts	Top Guide Plate	Bottom Guide Plate	Load Rating
4.3/4"	4.1/2"	774 090-182-X	774 809	774 909	150 ton
5.1/4"	5.1/2"	774 090-183-X	774 809	774 909	150 ton
6.1/4"		774 090-187-X	774 813	774 913	150 ton
6.1/2"	6.3/4"	774 090-188-X	774 815	774 915	150 ton
6.3/4"		774 090-189-X	774 815	774 915	150 ton
7"		774 090-190-X	774 815	774 915	150 ton
8"	8.1/2"	774 090-194-X	774 819	774 919	150 ton
8.1/4"		774 090-195-X	774 822	774 922	150 ton
8.1/2"		774 090-196-X	774 822	774 922	150 ton
8.3/4"		774 090-197-X	774 824	774 924	150 ton
9"		774 090-198-X	774 826	774 926	150 ton
9.1/2"	9.1/2"	774 090-199-X	774 827	774 927	150 ton
9.3/4"		774 090-203-X	774 827	774 927	150 ton
10"		774 090-202-X	774 827	774 927	150 ton

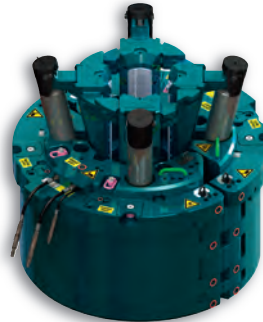
Carrier for Drill Collar without ZIP Groove

API Pipe Size	Carrier Body Size	Carrier Assembly c/w Inserts	Top Guide Plate	Bottom Guide Plate	Load Rating
3.1/8"	3.1/2"	774 090-308-X	774 805	774 905	150 ton
3.3/8"	5.1/2"	774 090-309-X	774 805	774 905	150 ton
4.3/4"		774 090-276-X	774 809	774 909	150 ton
6.1/4"	6.3/4"	774 090-284-X	774 813	774 913	150 ton
6.1/2"		774 090-286-X	774 815	774 915	150 ton
6.3/4"		774 090-287-X	774 815	774 915	150 ton
8"	8.1/2"	774 090-293-X	774 819	774 919	150 ton
8.1/4"		774 090-295-X	774 822	774 922	150 ton
8.1/2"		774 090-296-X	774 822	774 922	150 ton
9"		774 090-297-X	774 826	774 926	150 ton
9.1/2"	9.1/2"	774 090-298-X	774 827	774 927	150 ton

Load Rated Master Bushing (LRMB)



LRMB WITH SLIP DOWN



LRMB WITH SLIP UP



Description:

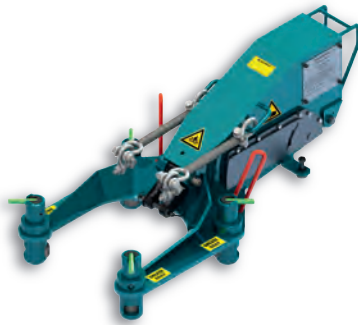
FORUM LRMB-1250 Load Rated Master Bushing incorporates a hydraulic slip lifter and a slip assembly with curved dies for an optimized slip contact area, embedded in a 49.1/2" master bushing frame. The LRMB-1250 offers the optimal solution for handling 6.5/8" dp (6.906" slip proof section) landing strings and above.

Features:

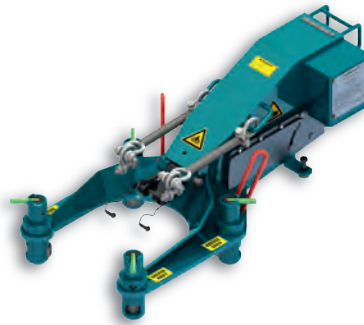
- Flush mounted in „Slips set“ position with 4-Slips for an optimal grip angle arrangement
- Equipped with backup torque and additional down force for safe operation
- All dies are installed with load shoulder for optimal load distribution
- „Slip set“ and „Slip raised“ hydraulic feedback signal

LOAD RATED MASTER BUSHING

	Configuration 1 (with Slip Assembly)	Configuration 2 (with Adapter Bowl)
P/N	559 100-RT*	559 100-RT*
Rated Capacity	1250 ton	750 ton
Pipe size range	5" – 6.5/8"	2.3/8" – 13.3/8"
Working pressure	Min 160 bar (2321 psi) Max 210 bar (3046 psi)	Min 160 bar (2321 psi) Max 210 bar (3046 psi)
Downforce	Min 12,8 ton (at 160 bar / 2321 psi) Max 16,8 ton (at 210 bar / 3046 psi)	Min 12,8 ton (at 160 bar / 2321 psi) Max 16,8 ton (at 210 bar / 3046 psi)
Weight	6,55 ton	5,0 ton
Slip Assembly	See table below	
Hydraulic Slip Lifter		
Bottom Guide Plate	See table below	
Adapter Bowl		559 170
Bowl #1, #2 or #3		See page 66
Hand Slips		See page 56-61
Optional equipment	P/N	P/N
Hook up Kit	559 100-TK	559 100-TK
Manual Grease Pump	755 677-3	755 677-3
Air Operated Grease Pump	775 810	775 810
Control Unit	757 160	757 160
Bit Breaker Plate	553 455	553 455
Pipe Size	Slip Assembly	Bottom Guide Plate
5"	559 157-X	559 715
5.1/2"	559 158-X	559 716
5.7/8"	559 159-X	559 717
6.5/8"	559 160-X	559 720
6.906"	559 161-X	559 941



PSA-150



PSH-150



Description:

FORUM PSA / PSH Slip Lifter is a pneumatically / hydraulically operated power tool used to lift drill pipe slips and reduce personnel fatigue and injuries through remote operation from the driller’s cabin or standalone control panels. It will also extend slip and insert life by properly setting and raising slips. The Slip Lifter can be used with FORUM standard drill pipe slips from 2.3/8” – 7.5/8” and most other brands.

Features:

- Pneumatic and hydraulic models available
- Equipped with hydraulic feedback „Slip set“
- Models available to fit both pin and square drive master bushings from 17.1/2” to 49.1/2”
- Installed into 25.3/4” pin drive holes
- PSH with 2 ton downforce eliminates need of safety clamps

SLIP LIFTER

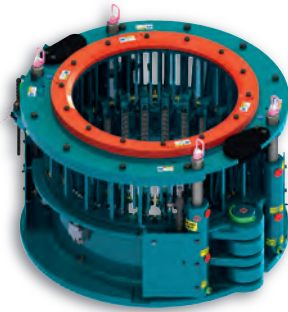
Type	P/N	Range	Weight	Description
PSA	88 720-A	2.3/8” – 7.5/8”	200 kg (440 lbs)	Lift up and down with Quick Lock Pin Assembly for Plain Bores
PSA	88 710-A	2.3/8” – 7.5/8”	200 kg (440 lbs)	Lift up and down with Locking Assembly for Bores with Groove (to be used inside Master Bushings with Slot only)
PSA	88 920-A	2.3/8” – 7.5/8”	200 kg (440 lbs)	For 17.1/2” Rotary Table
PSH	88 720-H	2.3/8” – 7.5/8”	200 kg (440 lbs)	Lift up and down with Quick Lock Pin Assembly for Plain Bores
PSH	88 710-H	2.3/8” – 7.5/8”	200 kg (440 lbs)	Lift up and down with Locking Assembly for Bores with Groove (to be used inside Master Bushings with Slot only)
PSH	88 710-HD	2.3/8” – 7.5/8”	200 kg (440 lbs)	Lift up and down with Locking Assembly for Bores with Groove (to be used inside Master Bushings with Slot only) with 2 ton downforce

Accessories

88 408-C	Optional Adapter for Varco SDXL Handslips	N/A	4 kg (8.8 lbs)	N/A
88 408-D	Optional Adapter for Varco SDML Handslips	N/A	4 kg (8.8 lbs)	N/A
754 003-3	Electrical Control Unit			

Calculated sound pressure level: 69,9 dB(A)

Hydraulic Casing Slip Lifter (HCSL)



HCSL

**Description:**

FORUM HCSL-350 Hydraulic Casing Slip Lifter is a power tool used to lift casing / conductor slips and reduce personnel fatigue and injuries through remote operation from the driller's cabin or stand-alone control panels. It will also extend slip and insert life by properly setting and raising slips. The Slip Lifter can be used with FORUM standard casing / conductor slips from 18.5/8" – 30".

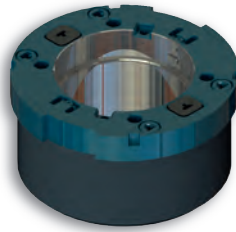
Features:

- Hydraulically operated, including feedback signal for „Slip set“; a „Slip up“ signal is optional
- Uses standard FORUM CSL slip segments, which improves slip segment utilization
- Integrates into casing running tools and topdrives
- Designed with manual guide plate for different pipe sizes
- Remote operations possible with an optional FORUM control

HYDRAULIC CASING SLIP LIFTER

P/N	558 020-X
Load Rating	350 ton
Pipe size range	18.5/8" – 30"
Working pressure	Min 140 bar (2027 psi) Max 210 bar (3046 psi)
Required Flow rate	Min 5 Gpm (18.9 l/m) Max 10 Gpm (37.9 l/m)

API Pipe Size	Slip Carrier	Reducing Bushing	Load Rating
18.5/8"	558 066-X	553 464-X	350 ton
20"	558 063-X	553 464-X	350 ton
24"	558 064-X	553 463-X	350 ton
26"	558 065-X	553 462-X	350 ton
30"	558 061-X	n/a	350 ton



XPLS MASTER BUSHING



Description:

FORUM XPLS Systems consists of a proprietary master bushing, insert bowl, and slips designed to address the requirement for ultra-high loads in the emerging deep drilling market. The XPLS System also uses the hydraulically operated, XP-1000 BackSaver® to lift the slips and reduce personnel fatigue and injuries through remote operation from the driller's cabin or standalone control panels. Designed to handle pipe ranging from 3.1/2" – 7.1/8" and is load rated for 1000 ton.

Features:

- Automated operation
- Hydraulic feedback options available
- Split 37.1/2" keyed master bushing
- Split inner bowl with 90° orientation to master bushing
- Patented slip and bowl taper to reduce crushing forces
- Patented load distributing slip / insert system
- Extended 20" effective slip height and 80% effective contact area to reduce crushing forces
- Standard API 4" TPF insert bowls available
- Optional wear/deflection plate protects bowl from wear

XP-1000 BACKSAVER (W/O SLIPS)

Description	P/N	Weight
XP-1000 BackSaver Assembly	1014730	136 kg (300 lbs)
XP-1000 BackSaver Assembly w/ Down Sensor	1074731	144 kg (317 lbs)

XP-1000 MASTER BUSHINGS

Description	P/N	Weight	Load Rating
XP-1000 Master Bushing Assembly	1031715-X	1867 kg (4117 lbs)	1000 ton
XP-1000 Master Bushing Assembly w/ Deflection Plate	1027769-X	2097 kg (4622 lbs)	1000 ton

XP-1000 INSERT BOWLS

Description	P/N	Weight	Load Rating
Insert Bushing f/ XPLS System	1014720-X	703 kg (1550 lbs)	1000 ton
Insert Bushing f/ XPLS System w/ Umbilical Slot	03-955-01-X	676 kg (1490 lbs)	1000 ton
Insert Bushing f/ XPLS System w/ 6" Umbilical Slot	03-955-06-X	656 kg (1446 lbs)	1000 ton
#3 Insert Bushing f/ XPLS System (4" TPF)	1018990-X	679 kg (1496 lbs)	1000 ton
#2 Insert Bushing f/ XPLS System (4" TPF)	03-957-X	588 kg (1297 lbs)	1000 ton
#1 Insert Bushing f/ XPLS System (4" TPF)	03-958-X	446 kg (983 lbs)	1000 ton

XP-1000

Description	Range	P/N	Weight	Load Rating
XP-1000 Slip Assembly	7"	03-1000-X	179 kg (394 lbs)	1000 ton
XP-1000 Slip Assembly	7.1/8"	03-1001-X	177 kg (391 lbs)	1000 ton



XP-1000-20 SLIP



XP-1000 LIFTING SLINGS AND ACCESSORIES

Description	P/N
XPLS Lifting Sling	03-923*
XPLS Lifting Sling; 1/2" Cable	03-923-01
XP Bit Breaker Adapter	03-959
LDXL/XP Slip Adapter Kit	26-207-A**
Intermediate Hose Set	1052731***
Intermediate Hose Set w/ Down Sensor	1052750***
XP-1000 BackSaver Stand	1017196***
Control Interface Module, Power Slips	1027337
Hydraulic Valve Stand	26-832-ASSY
Replacement T-Bar (Load Tested)	1151049

XP-1000 INSERTS (30 REQUIRED PER SLIP SET)

Range	P/N	Weight per Set
3.1/2"	1046515	85 kg (187 lbs)
4"	03-1000-503	73 kg (160 lbs)
4.1/2"	03-1000-504	73 kg (160 lbs)
5"	03-1000-505	65 kg (143 lbs)
5.1/2"	03-1000-510	56 kg (123 lbs)
5.875"	03-1000-515	49 kg (107 lbs)
6.625"	03-1000-520	32 kg (71 lbs)
6.906"	03-1000-523	27 kg (59 lbs)
7"	03-1000-525	25 kg (54 lbs)
7.125"	03-1000-530	22 kg (48 lbs)

LDXL INSERTS (30 REQUIRED PER SLIP SET)

Range	P/N	Weight per Set
4.1/2"	03-504	59 kg (131 lbs)
5"	03-505	53 kg (117 lbs)
5.1/2"	03-510	46 kg (101 lbs)
5.625"	03-511-1****	43 kg (95 lbs)
5.875"	03-515	40 kg (88 lbs)
6.625"	03-520	26 kg (58 lbs)
6.906"	03-523	21 kg (47 lbs)
7"	03-525	20 kg (44 lbs)

* Lifting sling included with XP-1000 Master bushing Assemblies **Slip Adapter Kit included in LDXL and XP-1000 Slip assemblies
 Items are included with XP-1000 Backsaver Assemblies *Non-Directional Insert

RIG FLOOR EQUIPMENT

Pneumatic BackSaver



26-100-PD



Description:

FORUM BackSaver® is a pneumatically/hydraulically operated power tool used to lift the slips and reduce personnel fatigue and injuries through remote operation from the driller's cabin or standalone control panels. It will also extend slip and insert life by properly setting and raising slips.

Features:

- Models available to fit both pin and square drive master bushings
- Models available to fit 17.1/2" – 37.1/2" master bushings
- Pneumatic and hydraulic models available
- Hydraulic feedback options available (some models)
- Uses standard 16" slips (adapter kits required)

PNEUMATIC BACKSAVER (W/O SLIPS)

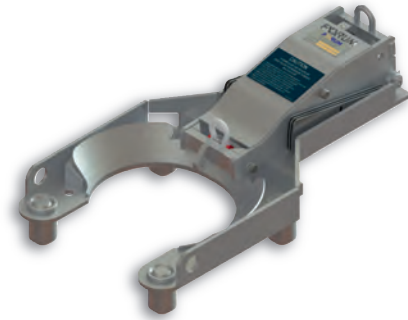
Description	P/N	Weight
Pneumatic BackSaver Assembly f/ 27.1/2" Pin Drive	26-100-PD	136 kg (300 lbs)
Pneumatic BackSaver Assembly f/ 27.1/2" Pin Drive; Adjustable	26-100-PD-01	136 kg (300 lbs)
Pneumatic BackSaver Assembly f/ 20.1/2" Pin Drive	26-100-PD-02	125 kg (275 lbs)
Pneumatic BackSaver Assembly f/ 17.1/2" Pin Drive	26-100-PD-03	125 kg (275 lbs)
Pneumatic BackSaver Assembly f/ Square Drive	26-100-SD	136 kg (300 lbs)

PNEUMATIC BACKSAVER ACCESSORIES

Description	P/N
Lifting Sling	26-524*
Foot Operated Control Valve	34-129
Filter – Regulator – Lubricator Unit	34-127
10' Air Hose	26-540-10
15' Air Hose	26-540-15
25' Air Hose	26-540-25
Storage Stand	26-501*

RIG FLOOR EQUIPMENT

Hydraulic BackSaver



26-800-PD



HYDRAULIC BACKSAVER (W/O SLIPS)

Description	P/N	Weight
Hydraulic BackSaver Assembly f/ 27.1/2" Pin Drive	26-800-PD	136 kg (300 lbs)
Hydraulic BackSaver Assembly f/ 27.1/2" Pin Drive; w/Down Sensor	26-800-PD-01	136 kg (300 lbs)
Hydraulic BackSaver Assembly f/ 20.1/2" Pin Drive	26-800-PD-02	125 kg (275 lbs)
Hydraulic BackSaver Assembly f/ Square Drive	26-800-SD	136 kg (300 lbs)

HYDRAULIC BACKSAVER ACCESSORIES

Description	P/N
Lifting Sling	26-524*
Hydraulic Valve Stand	26-832-ASSY
Intermediate Hose Set	1052731*
Intermediate Hose Set w/ Down Sensor	1052750***
Hydraulic Hose, Tank	1040946**
Hydraulic Hose, Pressure	1040948**
Storage Stand	26-501*
Control Interface Module, Power Slips	1027337

BACKSAVER SLIP ADAPTER KITS

Description	P/N
Slip Adapter Kit/ SDXL Slips	26-507-A
Slip Adapter Kit/ 4.1/2" DU Long Slips	26-507-B
Slip Adapter Kit/ 5.1/2" SDU Long Slips	26-507-D
Slip Adapter Kit/ 7" SDU Long and LD Slips	26-507-E
Slip Adapter Kit/ 5" SDML Slips	26-507-H
Slip Adapter Kit/ 3.1/2" & 4.1/2" SDML Slips	26-507-I
Slip Adapter Kit/ 5.1/2" DU Long Slips	26-507-J
Slip Adapter Kit/ 4.1/2" & 5" RSX / LRS Slips	1121442
Slip Adapter Kit/ 5.1/2" & 6.5/8" RSX / LRS Slips	1121585

*Item included in BackSaver Assemblies **Hoses connects from Valve Stand to Power Unit
 ***Items are included with XP-1000 Backsaver Assemblies

RIG FLOOR EQUIPMENT

Manual Drill Collar Slips



C-1



DCM



Description:

FORUM Drill Collar Slips are designed for use in API bowls to grip and fix vertical pipes. They have a multi-segment design and are made of alloy steel which is heat-treated for strength and wear resistance.

Features:

- Compatible with PSA-150 / PSH-150
- Manufactured in accordance with API 7K latest Edition
- Load Rating from 100 up to 650 ton
- Pipe range from 2.3/8" – 11.3/4"

MULTISEGMENT DRILL COLLAR SLIP (DCS)

API Pipe Size	Slip Assembly	Used inside Bowl	Load Rating
3" – 4"	84 110-X	Bowl #3	160 ton
4" – 4.7/8"	84 120-X	Bowl #3	160 ton

MULTISEGMENT DRILL COLLAR SLIP (DCM)

API Pipe Size	Slip Assembly	Used inside Bowl	Load Rating
4.1/2" – 6"	85 110-X	Bowl #3	270 ton
5.1/2" – 7"	85 120-X	Bowl #3	270 ton

MULTISEGMENT DRILL COLLAR SLIP (DCL)

API Pipe Size	Slip Assembly	Used inside Bowl	Load Rating
6.3/4" – 8.1/4"	86 120-X	Bowl #3	210 ton
8" – 9.1/2"	86 130-X	Bowl #3	220 ton
8.1/2" – 10"	86 140-X	Bowl #2	240 ton
9.1/4" – 11.1/4"	86 150-X	Bowl #2	260 ton
11" – 12.3/4"	86 160-X	Bowl #1	320 ton
12" – 14"	86 170-X	Bowl #1	360 ton

RIG FLOOR EQUIPMENT

Manual Drill Collar Slips



Wolley® Type „A“



C-1 DRILL COLLAR SLIPS COMPLETE*/**

Description	FET P/N	#Segments	WT.	Load Rating
3" – 4.1/2"	08-111-X	8	112	100 ton
4.1/4" – 5.3/4"	08-112-X	10	122	200 ton
5.1/2" – 7"	08-113-X	12	134	225 ton
6.3/4" – 8.1/4"	08-114-X	12	118	150 ton
8.1/2" – 10"	08-115-X	12	98	100 ton
10" – 11.1/4"	08-116-X***	17	158	200 ton
11.1/4" – 12.3/4"	08-117-X****	19	210	375 ton

TYPE A DRILL COLLAR SLIPS*

Description	FET P/N	#Segments	WT.	Load Rating
3.3/4" – 4.3/4"	20-111-X	7	93.77	100 ton
3" – 4.1/2"	20-111-1-X	8	112.77	100 ton
4.1/2" – 5.3/4"	20-112-X	9	118.51	100 ton
5.1/2" – 7"	20-113-X	10	117.92	100 ton
6.3/4" – 8.1/4"	20-114-X	11	127.15	125 ton
8.1/4" – 10"	20-115-X	12	125.54	125 ton
10" – 11.3/4"	20-116-X	15	171.17	175 ton

DCS DRILL COLLAR SLIPS

Type	P/N	Range	Weight	Load Rating
DCS-S	16-120-X	3" – 4"	51 kg (112 lbs)	140 ton
DCS-S	16-121-X	4" – 4.7/8"	47 kg (103 lbs)	140 ton
DCS-R	16-122-X	4.1/2" – 6"	54 kg (120 lbs)	180 ton
DCS-R	16-123-X	5.1/2" – 7"	51 kg (112 lbs)	180 ton
DCS-L	16-125-X	5.1/2" – 7"	78 kg (172 lbs)	220 ton
DCS-L	16-126-X	6.3/4" – 8.1/4"	70 kg (154 lbs)	220 ton
DCS-L	16-127-X	8" – 9.1/2"	78 kg (173 lbs)	240 ton
DCS-L	16-128-X	8.1/2" – 10"	84 kg (185 lbs)	260 ton
DCS-L	16-129-X	9.1/4" – 11.1/4"	90 kg (198 lbs)	280 ton
DCS-L	16-130-X	11" – 12.3/4"	97 kg (213 lbs)	340 ton
DCS-L	16-131-X	12" – 14"	94 kg (207 lbs)	340 ton

*Replace the -X at the end of the part number with -F-X for Flex Handle option **All parts are interchangeable with Baash-Ross C-1 Drill Collar Slips
 Fits No. 1 Insert Bowl *Fits No. 2 Insert Bowl

RIG FLOOR EQUIPMENT

Manual Rotary Slips



RSX



RSM ROTARY SLIP

API Pipe Size	Slip Body Size	Slip Assembly c/w Inserts	Inserts P/N	Inserts Qty.	Load Rating
2.3/8"	3.1/2"	82 110-2-X	80 110	30	200 ton
2.7/8"	3.1/2"	82 120-2-X	80 111	30	200 ton
3.1/2"	3.1/2"	82 130-2-X	80 112	30	200 ton

RSX ROTARY SLIP

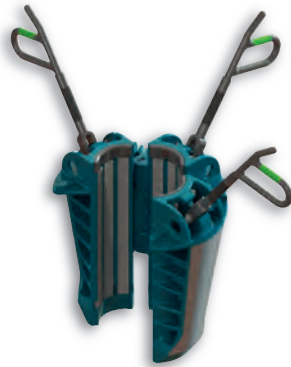
API Pipe Size	Slip Body Size	Slip Assembly c/w Inserts	Inserts P/N	Inserts Qty.	Load Rating
3.1/2"	4.1/2"	83 210-2-X	80 113	54	275 ton
4"	4.1/2"	83 220-2-X	80 114	54	275 ton
4.1/2"	4.1/2"	83 230-2-X	80 115	54	275 ton
4"	5"	83 310-2-X	80 118	54	275 ton
4.1/2"	5"	83 320-2-X	80 116	54	275 ton
5"	5"	83 330-2-X	80 117	54	275 ton
4.1/2"	5.1/2"	83 410-2-X	80 118	54	350 ton
5"	5.1/2"	83 420-2-X	80 119	54	350 ton
5.1/2"	5.1/2"	83 430-2-X	80 120	54	350 ton
5.3/4"	6.5/8"	83 550-2-X	270 808	54	275 ton
5.7/8"	6.5/8"	83 540-2-X	270 108	54	275 ton
6.5/8"	6.5/8"	83 520-2-X	270 109	54	275 ton
6"	7"	83 510-X	80 118	72	500 ton
6.5/8"	7"	83 520-X	80 122	72	500 ton
7"	7"	83 530-X	80 123	72	500 ton
6.906"	7.5/8"	83 555-X	350 710	72	275 ton
7.5/8"	7.5/8"	83 560-X	80 123	72	275 ton

LOAD RATED SLIP (LRS)

API Pipe Size	Slip Body Size	Slip Assembly c/w Inserts	Inserts P/N	Inserts Qty.	Load Ring	Load Ring Qty.	Load Rating
3.1/2"	4.1/2"	83 910-2-X	80 113	45	83 405-4	6	500 ton
4"	4.1/2"	83 920-2-X	80 114	45	83 405-4	6	500 ton
4.1/2"	4.1/2"	83 930-2-X	80 115	45	83 405-4	6	500 ton
4.1/2"	5.1/2"	83 730-X	270 905 (80 118)	45	83 405-1	6	500 ton
5"	5.1/2"	83 720-X	270 506 (80 119)	45	83 405-1	6	500 ton
5.1/2"	5.1/2"	83 710-X	270 107 (80 120)	45	83 405-1	6	500 ton
5.7/8"	6.5/8"	83 620-2-X	270 708	45	83 405-2	6	650 ton
6.5/8"	6.5/8"	83 610-2-X	270 109	45	83 405-2	6	650 ton
7"	7"	83 810-X	80 123	60	83 405-3	6	500 ton
6.906"	7"	83 830-X	270 210	60	83 405-3	6	500 ton
6.5/8"	7"	83 840-X	270 409	60	83 405-3	6	500 ton

RIG FLOOR EQUIPMENT

Manual Rotary Slips



SDML/SDXL



SD SERIES SLIPS LESS INSERTS

Type	P/N*/**	Slip Body Size	Load Rating	Weight
SDML	23-100-X	3.1/2"	125 ton	90 kg (199 lbs)
SDML	23-200-X	4.1/2"	225 ton	88 kg (194 lbs)
SDML	23-300-X	5"	225 ton	88 kg (193 lbs)
SDXL	24-200-X	4.1/2"	250 ton	106 kg (233 lbs)
SDXL	24-100-X	5"	200 ton	103 kg (228 lbs)
SDXL	24-300-X	5.1/2"	175 ton	96 kg (212 lbs)

SD SERIES SLIPS WITH INSERTS

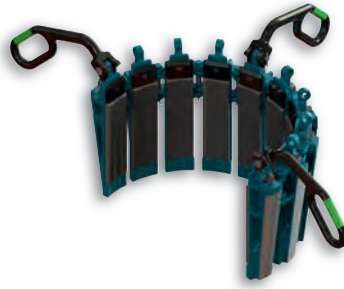
Type	P/N*/**	Slip Size / Pipe Size	Load Rating	Weight
SDML	23-135-X	3.1/2" x 3.1/2"	125 ton	96 kg (211 lbs)
SDML	23-127-X	3.1/2" x 2.7/8"	125 ton	98 kg (217 lbs)
SDML	23-123-X	3.1/2" x 2.3/8"	125 ton	103 kg (226 lbs)
SDML	23-245-X	4.1/2" x 4.1/2"	225 ton	96 kg (212 lbs)
SDML	23-240-X	4.1/2" x 4"	225 ton	100 kg (221 lbs)
SDML	23-235-X	4.1/2" x 3.1/2"	225 ton	104 kg (230 lbs)
SDML	23-500-X	5" x 5"	225 ton	96 kg (211 lbs)
SDML	23-545-X	5" x 4.1/2"	225 ton	100 kg (220 lbs)
SDML	23-540-X	5" x 4"	225 ton	104 kg (229 lbs)
SDXL	24-245-X	4.1/2" x 4.1/2"	250 ton	116 kg (255 lbs)
SDXL	24-240-X	4.1/2" x 4"	250 ton	120 kg (265 lbs)
SDXL	24-235-X	4.1/2" x 3.1/2"	250 ton	125 kg (276 lbs)
SDXL	24-150-X	5" x 5"	200 ton	113 kg (250 lbs)
SDXL	24-145-X	5" x 4.1/2"	200 ton	118 kg (260 lbs)
SDXL	24-140-X	5" x 4"	200 ton	123 kg (271 lbs)
SDXL	24-355-X	5.1/2" x 5.1/2"	175 ton	116 kg (255 lbs)
SDXL	24-350-X	5.1/2" x 5"	175 ton	111 kg (244 lbs)
SDXL	24-345-X	5.1/2" x 4.1/2"	175 ton	116 kg (255 lbs)

*Replace the -X at the end of the part number with -F-X for Flex Handle option

**Replace the -X at the end of the part number with -BS-X for BackSaver option

RIG FLOOR EQUIPMENT

Manual Casing Slips



UC-3



FET UC-3 CASING SLIPS

Casing Size	P/N w/Inserts	Slip Size	Load Rating
9.5/8"	7704-5029-X	10.3/4"	500 ton
10.3/4"	7704-5028-X	10.3/4"	500 ton
11.3/4"	7704-5027-X	13.3/8"	300 ton
12.3/4"	7704-5026-X	13.3/8"	300 ton
13.3/8"	7704-5025-X	13.3/8"	300 ton
16"	7704-5036-X	16"	350 ton
20"	7704-5034-X	20"	425 ton
18.5/8"	7704-5035-X	20"	425 ton
24"	7704-5001-X	24"	475 ton
22.1/2"	7704-5002-X	24"	475 ton
26"	7704-5006-X	26"	500 ton
30"	7704-5005-X	30"	500 ton
36"	7704-5007-X	36"	500 ton
42"	7704-5019-X	42"	500 ton

FET CMSXL CASING SLIPS COMPLETE*/**

Casing Size	P/N	Total Segments	Hinge Pins	Load Rating
6.5/8"	14-111-X	12	11	240 ton
7"	14-112-X	12	11	240 ton
7.5/8"	14-113-X	12	11	240 ton
8.5/8"	14-114-X	13	12	260 ton
9.5/8"	14-115-X	14	13	280 ton
9.7/8"	14-129-X	14	13	280 ton
10.3/4"	14-116-X	15	14	300 ton
11.3/4"	14-117-X	17	16	340 ton
12.3/4"	14-110-X	17	16	340 ton
13.3/8"	14-118-X	18	17	360 ton
13.5/8"	14-128-X	18	17	360 ton
15"	14-125-X	20	19	400 ton
16"	14-119-X	21	20	420 ton
14.1/2"	14-119-513-X	21	20	420 ton
18.5/8"	14-120-X	25	24	500 ton
20"	14-121-X	26	25	500 ton
22"	14-130-X	28	27	500 ton
24"	14-122-X	30	29	500 ton
26"	14-123-X	33	32	500 ton
28"	14-131-X	35	34	500 ton
30"	14-124-X	37	36	500 ton
36"	14-127-X	44	43	500 ton

*All Slips 9.5/8" and larger are furnished with 4 handles. All parts are interchangeable with VARCO type CMSXL Casing Slips.

**Replace the -X at the end of the part number with -F-X for Flex Handle option.

RIG FLOOR EQUIPMENT

Manual Casing Slips



CSL

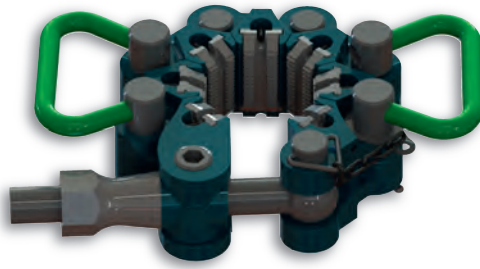


CSL-EXTRA LONG CASING SLIP

API Pipe Size	Slip complete w/Circular Buttons P/N	Button P/N	Buttons Qty.	Used inside Bushing/ Bowl Description	Load Rating
6.5/8"	87 110-X	80 155	144	MPCH with Bowl #3	360 ton
7"	87 120-X	80 150	144	MPCH with Bowl #3	360 ton
7.5/8" and 7.3/4"	87 130-X	80 156	144	MPCH with Bowl #3	360 ton
8.5/8"	87 140-X	80 156	156	MPCH with Bowl #3	390 ton
9.3/8"	87 145-X	80 154	168	MPCH with Bowl #2	450 ton
9.5/8" and 9.7/8" – 10"	87 150-X	80 156	168	MPCH with Bowl #2	420 ton
10.3/4"	87 160-X	80 156	180	MPCH with Bowl #2	420 ton
11"	87 165-X	80 158	204	MPCH with Bowl #1	500 ton
11.3/4" and 11.7/8"	87 170-X	80 154	204	MPCH with Bowl #1	500 ton
12.3/4"	87 175-X	80 158	204	MPCH with Bowl #1	500 ton
13.3/8" and 13.1/2"	87 180-X	80 156	216	MPCH with Bowl #1	500 ton
13.5/8" and 14"	87 195-X	80 158	240	16" CB	500 ton
15"	87 196-X	80 158	264	16" CB	500 ton
16" and 16.3/4"	87 190-X	80 157	252	16" CB	500 ton
17.7/8" and 18"	87 205-X	80 158	288	20" CB	500 ton
18.5/8" and 18.3/4"	87 200-X	80 153	300	20" CB	500 ton
20"	87 210-X	80 157	312	20" CB	500 ton
22"	87 215-X	80 158	360	24" CB	500 ton
24"	87 220-X	80 157	360	24" CB	500 ton
24.1/2"	87 225-X	80 158	384	26" CB	500 ton
26"	87 230-X	80 157	396	26" CB	500 ton
28"	87 235-X	80 158	432	30" CB	500 ton
30"	87 240-X	80 157	444	30" CB	500 ton
42"	87 280-X	80 157	612	42" CB	500 ton

CSC-CONDUCTOR PIPE SLIP

API Pipe Size	Slip complete w/Circular Buttons P/N	Button P/N	Buttons Qty.	Used inside Bushing/ Bowl Description	Load Rating
24"	88 110-X	80 157	156	24" CB	390 ton
26"	88 120-X	80 157	168	26" CB	420 ton
28"	88 125-X	80 157	180	30" CB	450 ton
30"	88 130-X	80 157	192	30" CB	480 ton
32"	88 140-X	80 157	204	36" CB	500 ton
36"	88 160-X	80 157	228	36" CB	500 ton



C-Clamp



Description:

FORUM Type C Safety Clamps are multi-segment safety clamps designed to help guard against dropping a wide range of flush-joint pipe, streamlined drill collars, tubings, etc. into the hole while making-up or breaking-out the string. Pipe size ranges from 1.1/8" – 43" with the proper number of segments and inserts. Each link changes the effective gripping diameter of the clamp by 1".

Features:

- Spring loaded tapered inserts
- Uniform gripping pressure around the Pipe
- Removable end link pin
- Available storage box

T-CLAMP

Range	P/N	Weight	Total # of Links
1.1/8" – 2"	88 003	16 kg (35 lbs)	4
2.1/8" – 3.1/4"	88 004	17 kg (37 lbs)	5
3.1/4" – 4.1/2"	88 005	18 kg (40 lbs)	6

C-CLAMP

Range	P/N	Weight	Total # of Links
3.3/4" – 4.5/8"	99 500	23 kg (51 lbs)	7
4.1/2" – 5.5/8"	99 501	25 kg (55 lbs)	8
5.1/2" – 6.5/8"	99 502	27 kg (60 lbs)	9
6.1/2" – 7.5/8"	99 503	29 kg (64 lbs)	10
7.1/2" – 8.5/8"	99 504	31 kg (68 lbs)	11
8.1/2" – 9.5/8"	99 505	33 kg (73 lbs)	12
9.1/2" – 10.5/8"	99 506	35 kg (77 lbs)	13
10.1/2" – 11.5/8"	99 507	38 kg (84 lbs)	14
11.1/2" – 12.5/8"	99 508	40 kg (88 lbs)	15
12.1/2" – 13.5/8"	99 509	42 kg (93 lbs)	16
13.1/2" – 14.5/8"	99 510	45 kg (99 lbs)	17
14.1/2" – 15.5/8"	99 511	47 kg (103 lbs)	18
15.1/2" – 16.5/8"	99 512	49 kg (108 lbs)	18
16.1/2" – 17.5/8"	99 513	51 kg (112 lbs)	19
17.1/2" – 18.5/8"	99 514	52 kg (115 lbs)	20
18.1/2" – 19.5/8"	99 515	54 kg (119 lbs)	21
19.1/2" – 21"	99 516	55 kg (122 lbs)	23
21.1/2" – 22.5/8"	99 517	57 kg (126 lbs)	24
22.1/2" – 24"	99 518	59 kg (130 lbs)	25
24.1/2" – 26"	99 519	63 kg (139 lbs)	27
29.1/2" – 30.1/2"	99 525	104 kg (230 lbs)	32
35.1/2" – 36.1/2"	99 526	118 kg (259 lbs)	38
41.1/2" – 42.1/2"	99 532	129 kg (284 lbs)	43



Pneumatic-Safety-Clamp



Description:

FORUM Type C pneumatic Safety Clamps are multi-segment safety clamps designed to help guard against dropping a wide range of flush-joint pipe, streamlined drill collars, tubings, etc. into the hole, while making-up or breaking-out the string. The pneumatic kit enhances safety and simplifies the installation around the collar.

Features:

- Pipe sizes from 3.3/4" up to 22"
- The pneumatic kit can be added retrospectively to existing FORUM type C Safety Clamps

PNEUMATIC SAFETY CLAMP

Range	P/N	Weight	Total # of Links
3.3/4" – 4.5/8"	99 500-1	15 kg (33 lbs)	7
4.1/2" – 5.5/8"	99 501-1	17 kg (37 lbs)	8
5.1/2" – 6.5/8"	99 502-1	19 kg (42 lbs)	9
6.1/2" – 7.5/8"	99 503-1	21 kg (46 lbs)	10
7.1/2" – 8.5/8"	99 504-1	23 kg (51 lbs)	11
8.1/2" – 9.5/8"	99 505-1	25 kg (55 lbs)	12
9.1/2" – 10.5/8"	99 506-1	27 kg (60 lbs)	13
10.1/2" – 11.5/8"	99 507-1	30 kg (66 lbs)	14
11.1/2" – 12.5/8"	99 508-1	32 kg (71 lbs)	15
12.1/2" – 13.5/8"	99 509-1	34 kg (75 lbs)	16
13.1/2" – 14.5/8"	99 510-1	36 kg (79 lbs)	17
14.1/2" – 15.5/8"	99 511-1	38 kg (84 lbs)	18
15.1/2" – 16.5/8"	99 512-1	89 kg (197 lbs)	18
16.1/2" – 17.5/8"	99 513-1	94 kg (207 lbs)	19
17.1/2" – 18.5/8"	99 514-1	97 kg (214 lbs)	20
18.1/2" – 19.5/82	99 515-1	100 kg (220 lbs)	21
19.1/2" – 22"	99 516-1	103 kg (227 lbs)	23

PNEUMATIC IMPACT WRENCH ASSEMBLY*

Range	P/N	Weight
3.3/4" – 42"	99 620	3 kg (7 lbs)

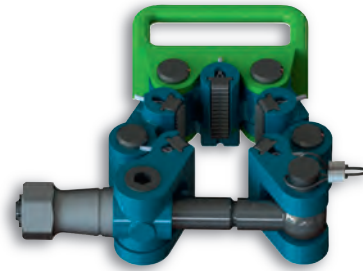
SAFETY CLAMP AIR KIT

Range	P/N	Weight
3.3/4" – 22"	99 630	10 kg (22 lbs)
22" – 42.1/2"	99 650	6 kg (13 lbs)

*Required for tightening Pneumatic Clamps



Type C Safety Clamp



Type T Safety Clamp



Description:

FORUM Type C Safety Clamps are multi-segment safety clamps designed to help guard against dropping a wide range of flush-joint pipe, streamlined drill collars, tubings, etc. into the hole while making-up or breaking-out the string. Pipe size ranges from 1.1/8" – 43" with the proper number of segments and inserts. Each link changes the effective gripping diameter of the clamp by 1".

Features:

- Spring loaded tapered inserts
- Uniform gripping pressure around the Pipe
- Removable end link pin
- Available storage box
- Available with lift clevis for easy handling above rig floor (some models)

TYPE T SERIES

Type	Range	P/N*	Required # of Links	Weight	Storage Box P/N
T	1.1/8" – 2"	11-125-01	4	16 kg (36 lbs)	11-120
T	2.1/8" – 3.1/4"	11-126-01	5	18 kg (40 lbs)	11-120
T	3.1/2" – 4.1/2"	11-127-01	6	20 kg (44 lbs)	11-120

TYPE C SERIES

Type	Range	P/N*	Required # of Links	Weight
CR	3.3/4" – 4.5/8"	12-127-01	7	21 kg (46 lbs)
CR	4.1/2" – 5.5/8"	12-128-01	8	25 kg (55 lbs)
CR	5.1/2" – 6.5/8"	12-129-01	9	27 kg (60 lbs)
CR	6.1/2" – 7.5/8"	12-130-01	10	29 kg (64 lbs)
CR	7.1/2" – 8.5/8"	12-131-01	11	31 kg (69 lbs)
CR	8.1/2" – 9.5/8"	12-132-01	12	33 kg (73 lbs)
CR	9.1/2" – 10.5/8"	12-133-01	13	35 kg (78 lbs)
CL	10.1/2" – 11.5/8"	12-134-01	14	37 kg (82 lbs)
CL	11.1/2" – 12.5/8"	12-135-01	15	40 kg (87 lbs)
CL	12.1/2" – 13.5/8"	12-136-01	16	41 kg (91 lbs)
CL	13.1/2" – 14.5/8"	12-137-01	17	52 kg (115 lbs)
CL	14.1/2" – 15.5/8"	12-138-01	18	54 kg (119 lbs)
CXL	15.1/2" – 17"	12-145-01	18	55 kg (121 lbs)
CXL	16.1/2" – 18"	12-146-01	19	57 kg (125 lbs)
CXL	17.1/2" – 19"	12-147-01	20	59 kg (129 lbs)
CXL	18.1/2" – 20"	12-148-01	21	61 kg (134 lbs)
CXL	19.1/2" – 21"	12-149-01	22	63 kg (139 lbs)

Available Types

CR: Single Screw

CL: Single Screw

CXL: Double Screw



A-MP-Clamp

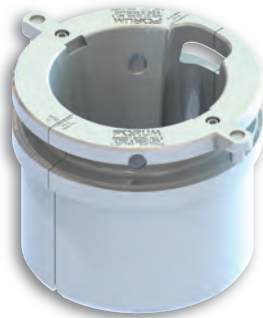


TYPE A-MP SERIES

Type	Range	P/N*	Required # of Links	Weight
A-MP-S	2.7/8" – 4.1/8"	31-009	7	58 kg (128 lbs)
A-MP-S	4" – 5"	31-010	8	60 kg (133 lbs)
A-MP-R	4.1/2" – 5.5/8"	31-011	7	54 kg (120 lbs)
A-MP-R	5.1/2" – 7"	31-012	8	59 kg (130 lbs)
A-MP-R	6.3/4" – 8.1/4"	31-013	9	63 kg (138 lbs)
A-MP-R	8" – 9.1/4"	31-014	10	67 kg (147 lbs)
A-MP-R	9.1/4" – 10.1/2"	31-015	11	70 kg (155 lbs)
A-MP-M	10.1/2" – 11.1/2"	31-016	12	74 kg (163 lbs)
A-MP-M	11.1/2" – 12.1/2"	31-017	13	78 kg (171 lbs)
A-MP-M	12.1/2" – 13.5/8"	31-018	14	81 kg (179 lbs)
A-MP-M	13.5/8" – 14.3/4"	31-019	15	85 kg (187 lbs)
A-MP-M	14.3/4" – 15.7/8"	31-020	16	89 kg (195 lbs)
A-MP-L	15.7/8" – 17"	31-021	17	98 kg (215 lbs)
A-MP-L	17" – 18.1/2"	31-022	18	101 kg (223 lbs)
A-MP-L	18.1/8" – 19.3/8"	31-023	19	105 kg (231 lbs)
A-MP-XL	19.3/8" – 20.3/8"	31-024	19	127 kg (280 lbs)
A-MP-XL	20.3/8" – 21.1/2"	31-025	20	131 kg (288 lbs)
A-MP-XL	21" – 22.5/8"	31-032	21	134 kg (296 lbs)
A-MP-XL	22.5/8" – 23.3/4"	31-033	22	138 kg (304 lbs)
A-MP-XL	23.3/4" – 24.7/8"	31-034	23	142 kg (312 lbs)
A-MP-XL	24.7/8" – 26"	31-035	24	145 kg (320 lbs)
A-MP-XL	26" – 27.1/8"	31-036	25	149 kg (328 lbs)
A-MP-XL	29.3/8" – 30.1/2"	31-039	28	152 kg (336 lbs)
A-MP-XL	35" – 36.1/8"	31-044	32	160 kg (352 lbs)

*Storage Boxes are included with the base A-MP assembly **NOTE:** Safety Clamps are not to be used as a lifting device

Master Bushings, RT-Adapters & Bowls



CASING BUSHING

**Description:**

FORUM Master Bushings and Adapters are available for the most common Rotary Table types and sizes. Special solutions are available on request.

Features:

- For Load Ratings up to 1500 ton
- For Rotary Table sizes from 27.1/2" up to 75.1/2"
- All Bowls are available with slots for liner
- Bowls have a 4" taper

MASTER BUSHINGS

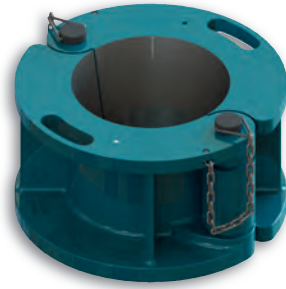
Type	P/N	RT Brand	RT size	Load Rating
Hinged Master Bushing MPCH*	553 410-X	Emsco	49.1/2"	750 ton
Hinged Master Bushing MPCH*	553 350-X	NOV	37.1/2"	500 ton
Hinged Master Bushing MPCH*	553 340-X	Emsco	37.1/2"	500 ton
Hinged Master Bushing MPCH*	553 300-X	Wirth	37.1/2"	500 ton
Solid Body Pin Drive Master Bushing, MSPC	553 560-X	National	27.1/2"	upon request

BOWLS

Type	P/N	Pipe size	RT size	Load Rating
Bowl #3	556 608-X**	8.5/8" & smaller	37.1/2"	750 ton
Bowl #2	556 609-X**	10.3/4" – 9.5/8"	37.1/2"	750 ton
Bowl #1	556 610-X**	13.3/8" – 11.3/4"	37.1/2"	750 ton
Bowl #3	551 810-X**	8.5/8" & smaller	27.1/2"	500 ton
Bowl #2	551 904-X**	10.3/4" – 9.5/8"	27.1/2"	500 ton
Bowl #1	551 903-X**	13.3/8" – 11.3/4"	27.1/2"	500 ton

RT-ADAPTERS

Type	P/N	RT Brand	RT size	Load Rating
Split Adapter	553 285-X	NOV/NOV	75.1/2" x 49.1/2"	1500 ton
Solid Adapter	553 220-X	NOV/NOV	60.1/2" x 49.1/2"	1500 ton
Hinged Adapter	553 230-X	NOV/NOV	60.1/2" x 49.1/2"	350 ton
Split Adapter	553 290-X	NOV/NOV	60.1/2" x 49.1/2"	1500 ton
Solid Adapter	553 200-X	NOV/NOV	49.1/2" x 37.1/2"	1000 ton
Hinged Adapter	553 210-X	NOV/NOV	49.1/2" x 37.1/2"	upon request
Solid Adapter	553 240-X	NOV/Oilwell/Wirth	49.1/2" x 37.1/2"	upon request
Split Adapter	553 295-X	NOV/Lewco	49.1/2" x 37.1/2"	1000 ton
Split Adapter	553 260-X	NOV/Oilwell/Wirth	49.1/2" x 37.1/2"	1000 ton
Hinged Adapter	553 250-X	NOV/Oilwell/Wirth	49.1/2" x 37.1/2"	upon request
Solid Adapter	553 245-X	Wirth/Oilwell/Wirth	49.1/2" x 37.1/2"	upon request
Solid Adapter	553 270-X	NOV/API	37.1/2" x 27.1/2"	upon request
Split Adapter	553 280-X	NOV/NOV	37.1/2" x 27.1/2"	upon request
Hinged Adapter	553 265-X	NOV/NOV	37.1/2" x 27.1/2"	upon request
Solid Adapter	553 275-X	Emsco/NOV	37.1/2" x 27.1/2"	750 ton



API BOWL



Description:

The FORUM API Bowl has the same bore and taper as the API #3 insert bowl with pipe sizes from 2.1/16" – 8.5/8" and a 100 ton load rating.

Features:

- Standard API 4" TPF
- Hinged design

8.5/8" API BOWL

Description	P/N	Weight	Load Rating
8.5/8" API Bowl	17-850-X	227 kg (500 lbs)	100 ton

Casing Bushings & Hinged Casing Spiders



CASING BUSHING

**Description:**

FORUM Hinged Casing Spiders (HCS) and Casing Bushings (CB) are used for casing operations with manual rotary slips. The HCS is placed on top of the rotary table or structure, the CB is inserted into the rotary table.

Features:

- Pipe sizes from 2.3/8" up to 42"
- Load ratings from 200 up to 500 ton
- Fits in 37.1/2" RT

CASING BUSHINGS

Type	P/N	RT Brand	Pipe size	Load Rating
Split Casing Bushing	553 727-X	NOV	30"	500 ton
Split Casing Bushing	553 727-2-X	Oilwell/Wirth	30"	500 ton
Split Casing Bushing	553 726-X	NOV	26"	500 ton
Split Casing Bushing	553 726-2-X	Oilwell/Wirth	26"	500 ton
Split Casing Bushing	553 725-X	NOV	24"	500 ton
Split Casing Bushing	553 725-2-X	Oilwell/Wirth	24"	500 ton
Split Casing Bushing	553 745-X	NOV	22"	500 ton
Split Casing Bushing	553 720-X	Emsco	20" – 18.5/8"	500 ton
Split Casing Bushing	553 720-1-X	NOV	20" – 18.5/8"	500 ton

Casing Bushings & Hinged Casing Spiders

HINGED CASING SPIDERS

Type	P/N	Pipe size	Load Rating
HCS-200 for 42" Pipe size	553 650-X	42"	200 ton
Reducing Bushing	553 660-X	42" x 40"	200 ton
Reducing Bushing for 42" x 36" Pipe size	553 651-X	42" x 36"	200 ton
HCS-200 for 36" Pipe size	553 492-X	36"	200 ton
Reducing Bushing for 36" x 32" Pipe size	553 497-X	36" x 32"	200 ton
Reducing Bushing for 36" x 30" Pipe size	553 493-X	36" x 30"	200 ton
Reducing Bushing for 36" x 26" Pipe size	553 494-X	36" x 26"	200 ton
Reducing Bushing for 36" x 24" Pipe size	553 499-X	36" x 24"	200 ton
Reducing Bushing for 36" x 20" – 18.5/8" Pipe size	553 498-X	36" x 20"	200 ton
HCS-200 for 30" Pipe size	553 480-X	30"	200 ton
Reducing Bushing for 30" x 20" Pipe size	553 463-1-X	30" x 20"	200 ton
HCS-200 for 20" – 18.5/8" Pipe size	553 490-X	20" – 18.5/8"	200 ton
Reducing Bushing for 20" x 16" Pipe size	553 630-X	20" x 16"	200 ton
Reducing Bushing for 20" x 13.3/8" – 11.3/4" Pipe size	553 475-X	20" x 13.3/8" – 11.3/4"	200 ton
Reducing Bushing for 13.3/8" x 10.3/4" – 9.5/8" (used with Reducing Bushing 20" x 13.3/8" – 11.3/4")	553 610-X	13.3/8" x 10.3/4" – 9.5/8"	200 ton
Reducing Bushing for 13.3/8" x 8.5/8" – 2.3/8" (used with Reducing Bushing 20" x 13.3/8" – 11.3/4")	553 611-X	13.3/8" x 8.5/8" – 2.3/8"	200 ton
HCS-200 for 13.3/8" – 11.3/4" Pipe size	553 600-X	13.3/8" – 11.3/4"	200 ton
Reducing Bushing for 13.3/8" x 10.3/4" – 9.5/8"	553 610-X	13.3/8" x 10.3/4" – 9.5/8"	200 ton
Reducing Bushing for 13.3/8" x 8.5/8" – 2.3/8"	553 611-X	13.3/8" x 8.5/8" – 2.3/8"	200 ton
HCS-350 for 36" Pipe size	553 670-X	36"	350 ton
Reducing Bushing for 36" x 32"	553 675-X	36" x 32"	350 ton
Reducing Bushing for 36" x 30"	553 677-X	36" x 30"	350 ton
Reducing Bushing for 36" x 26"	553 462-X	30" x 26"	500 ton
Reducing Bushing for 36" x 24"	553 463-X	30" x 24"	500 ton
Reducing Bushing for 36" x 20" – 18.5/8"	553 464-X	30" x 20" – 18.5/8"	500 ton
Reducing Bushing for 20" x 16"	552 465-X	20" x 16"	500 ton
Reducing Bushing for 20" x 13.3/8" – 11.3/4"	553 736-X	20" x 13.3/8" – 11.3/4"	500 ton
HCS-350 for 13.3/8" – 11.3/4" Pipe size	553 615-X	13.3/8" – 11.3/4"	350 ton
Reducing Bushing for 13.3/8" x 8.5/8" – 2.3/8"	553 618-X	13.3/8" x 8.5/8" – 2.3/8"	350 ton
HCS-500 for 30" Pipe size	553 460-X	30"	500 ton
Reducing Bushing for 30" x 26"	552 462-X	30" x 26"	500 ton
Reducing Bushing for 30" x 24"	553 463-X	30" x 24"	500 ton
Reducing Bushing for 30" x 20" – 18.5/8"	553 464-X	30" x 20" – 18.5/8"	500 ton
Reducing Bushing for 20" x 16" (used with Reducing Bushing 30" x 20" – 18.5/8")	552 465-X	20" x 16"	500 ton
HCS-500 for 20" – 18.5/8"	553 485-X	20" – 18.5/8"	500 ton
Reducing Bushing for 20" x 16"	552 465-X	20" x 16"	500 ton
Reducing Bushing for 20" x 13.3/8" – 11.3/4"	553 736-X	20" x 13.3/8" – 11.3/4"	500 ton
Reducing Bushing for 13.3/8" x 10.3/4" – 9.5/8" (used with Reducing Bushing 20" x 13.3/8" – 11.3/4")	553 737-X	13.3/8" x 10.3/4" – 9.5/8"	500 ton
Reducing Bushing for 20" x 10.3/4" – 9.5/8"	553 738-X	20" x 10.3/4" – 9.5/8"	500 ton

RIG FLOOR EQUIPMENT

Rotating Mousehole



I9000-PM



Description:

The FORUM Rotating Mousehole is a pneumatically/hydraulically operated power tool used to quickly and effectively make-up and set back stands of drill pipe, while simultaneously drilling. It can also be used to break-out and lay down excess pipe that has been left in the derrick. Though it does not make-up pipe to full torque, it does shoulder the connection to 1500 ft/lbs eliminating multiple torque cycles.

Features:

- Pneumatic and hydraulic models available
- Eliminates the need for spinning wrenches
- Moves spinning operations below the rig floor
- Reduces personnel

ROTATING MOUSHOLE TOOL

Description	P/N	Weight
Pneumatic Rotating Moushole Tool	I9000-PM	472 kg (1040 lbs)
Hydraulic Rotating Moushole Tool; Rineer Motor	I9000-HPM	520 kg (1147 lbs)
Hydraulic Rotating Moushole Tool; Parker Motor	I9020-HPM	502 kg (1107 lbs)

ROTATING MOUSHOLE ACCESSORIES

Description	P/N
Bowl Puller	I9000*
Landing and Retrieving Tool	I9002*
Pneumatic Control Valve	1040527*
Hydraulic Control Valve	I9586-ASSY*
5 Ton Spring Hanger	I9001



IA6C600



Description:

The FORUM A6 Kelly Spinner is a self-contained, direct drive unit, with two external pneumatic or hydraulic motors. Kelly Spinners can be used for rotating drill pipe slowly, for limited rathole and mousehole drilling and making fast Kelly connections. These units are completely reversible allowing the driller to spin-in, as well as spin-out, when making connections.

Features:

- 350 ton rating
- Pneumatic and hydraulic models available
- Dual Motor systems for right and left hand rotation
- Variable speed
- Multiple thread relief styles available
- Multiple sub materials available

A6 KELLY SPINNER

Description	P/N	Weight
Pneumatic Kelly Spinner w/4330 Sub w/Stress Relief	IA6C600	530 kg (1169 lbs)
Hydraulic Kelly Spinner w/4330 Sub w/Stress Relief	IA6H600	550 kg (1213 lbs)
Pneumatic Kelly Spinner w/4145H Sub w/Stress Relief	1040144	530 kg (1169 lbs)
Hydraulic Kelly Spinner w/4145H Sub w/Stress Relief	1148740	550 kg (1213 lbs)
Pneumatic Kelly Spinner w/4330 Sub w/Bore Back	1046250	526 kg (1159 lbs)
Hydraulic Kelly Spinner w/4330 Sub w/Bore Back	1148739	546 kg (1204 lbs)
Pneumatic Kelly Spinner w/4145H Sub w/Bore Back	1053802	526 kg (1159 lbs)
Hydraulic Kelly Spinner w/4145H Sub w/Bore Back	1148741	546 kg (1204 lbs)

A6 KELLY SPINNER ACCESSORIES

Description	P/N
Pneumatic Control Valve	1045417*
Hydraulic Control Valve	1047629*
Hydraulic Direction Valve	1048558*
Lift Bail	1046502*
Turnbuckle	1043967*

*Item included in Kelly Spinner Assembly

RIG FLOOR EQUIPMENT

Pipe Spinners



SSW 40



Description:

FORUM Pipe Spinners are durable, easy to use and designed for safety and longevity. The compact designs are self-contained, requiring no dedicated power source.

Features:

- Pipe sizes from 3.1/2" – 9.1/2"
- Adapter for 2.7/8" available for some models
- Power Units available on request

GRAYCHAIN – AIR

Model	Range	P/N	Weight	Power Requirements	Avg. RPM	Avg. Torque
3570 (air)	3.1/2" – 7"	9G-3570 AIR	386 Kg (850 lbs)	240 cfm @ 100 psi 113 l/sec @ 7 bar	100	1250 ft/lbs 1695 Nm
3595 (air)	3.1/2" – 9.1/2"	9G-3595 AIR	408 Kg (900 lbs)	240 cfm @ 100 psi 113 l/sec @ 7 bar	100	1250 ft/lbs 1695 Nm

GRAYCHAIN – HYDRAULIC

Model	Range	P/N	Weight	Power Requirements	Avg. RPM	Avg. Torque
3570 (hydr)	3.1/2" – 7"	9G-3570 HYD	363 Kg (800 lbs)	20 gpm @ 2000 psi 76 l/min @ 138 bar	90	1200 ft/lbs 1627 Nm
3595 (hydr)	3.1/2" – 9.1/2"	9G-3595 HYD	408 Kg (900 lbs)	20 gpm @ 2000 psi 76 l/min @ 138 bar	90	1200 ft/lbs 1627 Nm

GRAYSPIN – AIR

Model	Range	P/N	Weight	Power Requirements	Avg. RPM	Avg. Torque
Mark 10 (air)	3.1/2" – 7"	9 MARK 10	430 Kg (950 lbs)	240 cfm @ 100 psi 113 l/sec @ 7 bar	100	1285 ft/lbs 1742 Nm
Mark 30 (air)	3.1/2" – 9.1/2"	9 MARK 30 WL	567 Kg (1250 lbs)	240 cfm @ 100psi 113 l/sec @ 7 bar	100	1285 ft/lbs 1742 Nm

GRAYSPIN – HYDRAULIC

Model	Range	P/N	Weight	Power Requirements	Avg. RPM	Avg. Torque
Mark 20 (hydr)	3.1/2" – 7"	9 MARK 20	385 Kg (850 lbs)	20 gpm @ 2000 psi 76 l/min @ 138 bar	90	1285 ft/lbs 1742 Nm
Mark 40 (hydr)	3.1/2" – 9.1/2"	9 MARK 40 WL	499 Kg (1100 lbs)	20 gpm @ 2000 psi 76 l/min @ 138 bar	90	1285 ft/lbs 1742 Nm

BVOTSPIN

Model	Range	P/N	Weight	Power Requirements	Avg. RPM	Avg. Torque
SSW 40	3.1/2" – 9.1/2"	9GV73109	545 Kg (1200 lbs)	250 cfm	100	1100 ft/lbs 1490 Nm



K-25 TONG



Description:

FORUM Manual Tong are designed for making-up and breaking-out connections of tubulars, ranging from light weight tubing/casing to drill pipe and drill collars. The use of multiple latch steps and interchangeable hinge and lug jaw assemblies extends the range of the tongs.

Features:

- Pipe sizes from 1.050" up to 42"
- Torque rating from 2000 ft/lbs up to 160 000 ft/lbs
- Most models have safety handles

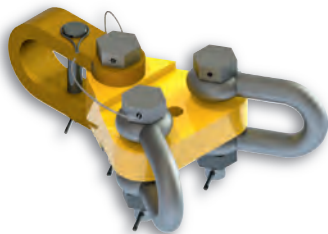
Optional equipment:



DIE DRIVER FOR INSERTS
FOR QUICK RELEASE
(P/N 26-350)



SAFETY HANDLES FOR
INCREASING SAFETY
(P/N 70 751)



U-CLAMP TO AVOID CROSSING
OF SECURING LINE
(P/N 70 616)



TENSION LOAD INDICATOR SYSTEM
TO ENSURE PROPER MAKE-UP



For more information
please visit our website!

RIG FLOOR EQUIPMENT

Manual Tubing Tongs

K-30 TUBING TONGS

Range*	Description	Torque Rating	P/N
1.05" – 4.1/8"	K-30 Tong L/ Dies, Hanger	5000 ft/lbs	06-101
1.05" – 4.1/8"	K-30 Tong Complete L/ Dies	5000 ft/lbs	06-102
1.05" – 4.1/8"	K-30 Tong L/ Dies W/ Rollover Hanger	5000 ft/lbs	06-103

K-30 DIES

Size*	Description	P/N
1.050"	K-30 Tong Die, 3/4"	06-132
1.315"	K-30 Tong Die, 1"	06-136
1.660"	K-30 Tong Die, 1.1/4"	06-133
1.900"	K-30 Tong Die, 1.1/2"	06-134
2"	K-30 Tong Die, 2"	06-138
2.1/16"	K-30 Tong Die, 2.1/16"	06-119
2.3/8"	K-30 Tong Die, 2.3/8"	06-120
2.7/8"	K-30 Tong Die, 2.7/8"	06-121
3"	K-30 Tong Die, 3"	06-135
3.1/16"	K-30 Tong Die, 3.1/16"	06-122
3.1/8"	K-30 Tong Die, 3.1/8"	06-123
3.1/4"	K-30 Tong Die, 3.1/4"	06-124
3.3/8"	K-30 Tong Die, 3.3/8"	06-130
3.1/2"	K-30 Tong Die, 3.1/2"	06-125
3.668"	K-30 Tong Die, 3.668"	06-126
3.3/4"	K-30 Tong Die, 3.3/4"	06-127
3.7/8"	K-30 Tong Die, 3.7/8"	06-131
4"	K-30 Tong Die, 4"	06-129
4.1/8"	K-30 Tong Die, 4.1/8"	06-128

K-50 TUBING TONGS

Range	Description	Torque Rating	P/N
2.3/8" – 5.1/2"	K-50 Tong L/ Dies, Hanger	7500 ft/lbs	06-501
2.3/8" – 5.1/2"	K-50 Tong Complete L/ Dies	7500 ft/lbs	06-502
2.3/8" – 5.1/2"	K-50 Tong L/ Dies W/ Rollover Hanger	7500 ft/lbs	06-503

K-50 HT TUBING TONGS

Range	Description	Torque Rating	P/N
2.3/8" – 5.1/2"	K-50 HT Tong L/ Dies, Hanger	15 000 ft/lbs	06-605
2.3/8" – 5.1/2"	K-50 HT Tong Complete L/ Dies	15 000 ft/lbs	06-606
2.3/8" – 5.1/2"	K-50 HT Tong L/ Dies W/ Rollover Hanger	15 000 ft/lbs	06-607

K-50 AND K-50 HT DIES

Size	Description	P/N
2.3/8"	K-50/K-50HT Tong Die, 2.3/8"	06-573
2.7/8"	K-50/K-50HT Tong Die, 2.7/8"	06-575
3.1/2"	K-50/K-50HT Tong Die, 3.1/2"	06-576
3.3/4"	K-50/K-50HT Tong Die, 3.3/4"	06-577
4"	K-50/K-50HT Tong Die, 4"	06-578
4.1/8"	K-50/K-50HT Tong Die, 4.1/8"	06-579
4.1/2"	K-50/K-50HT Tong Die, 4.1/2"	06-580
4.3/4"	K-50/K-50HT Tong Die, 4.3/4"	06-581
5"	K-50/K-50HT Tong Die, 5"	06-582
5.1/2"	K-50/K-50HT Tong Die, 5.1/2"	06-583

RIG FLOOR EQUIPMENT

Manual Tubing Tongs

K-70 TUBING TONGS

Range	Description	Torque Rating	P/N
2.7/8" – 7"	K-70 Tong L/ Dies, Hanger	12 500 ft/lbs	06-701
2.7/8" – 7"	K-70 Tong Complete L/Dies	12 500 ft/lbs	06-702
2.7/8" – 7"	K-70 Tong L/ Dies W/ Rollover Hanger	12 500 ft/lbs	06-703

K-70 DIES

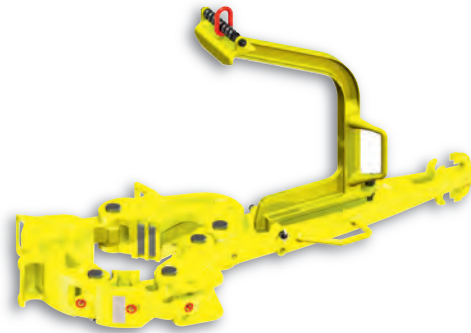
Size	Description	P/N
2.7/8"	K-70 Tong Die, 2.7/8"	06-773
3"	K-70 Tong Die, 3"	06-777
3.1/2"	K-70 Tong Die, 3.1/2"	06-758
3.3/4"	K-70 Tong Die, 3.3/4"	06-769
3.844"	K-70 Tong Die, 3.844"	06-764
4"	K-70 Tong Die, 4"	06-757
4.062"	K-70 Tong Die, 4.062"	06-762
4.1/4"	K-70 Tong Die, 4.1/4"	06-761
4.1/2"	K-70 Tong Die, 4.1/2"	06-756
4.60"	K-70 Tong Die, 4.60"	06-765
4.3/4"	K-70 Tong Die, 4.3/4"	06-755
4.7/8"	K-70 Tong Die, 4.7/8"	06-766
5"	K-70 Tong Die, 5"	06-754
5.04"	K-70 Tong Die, 5.04"	06-775
5.1/8"	K-70 Tong Die, 5.1/8"	06-774
5.1/4"	K-70 Tong Die, 5.1/4"	06-770
5.1/2"	K-70 Tong Die, 5.1/2"	06-753
5.3/4"	K-70 Tong Die, 5.3/4"	06-759
5.815"	K-70 Tong Die, 5.815"	06-767
5.7/8"	K-70 Tong Die, 5.7/8"	06-771
6"	K-70 Tong Die, 6"	06-752
6.1/4"	K-70 Tong Die, 6.1/4"	06-772
6.30"	K-70 Tong Die, 6.30"	06-768
6.1/2"	K-70 Tong Die, 6.1/2"	06-760
6.5/8"	K-70 Tong Die, 6.5/8"	06-751
6.770"	K-70 Tong Die, 6.770"	06-776
7"	K-70 Tong Die, 7"	06-750

TUBING TONG ACCESSORIES

Series	Description	P/N
K-20 & K-25	Rope Guide	05-109
K-25	Rollover Hanger	05-113
K-30, K-50, K-50 HT & K-70	Hanger	06-113
K-30, K-50, K-50 HT & K-70	Rollover Block	06-114

RIG FLOOR EQUIPMENT

Manual Drill Pipe & Casing Tongs



BV-100

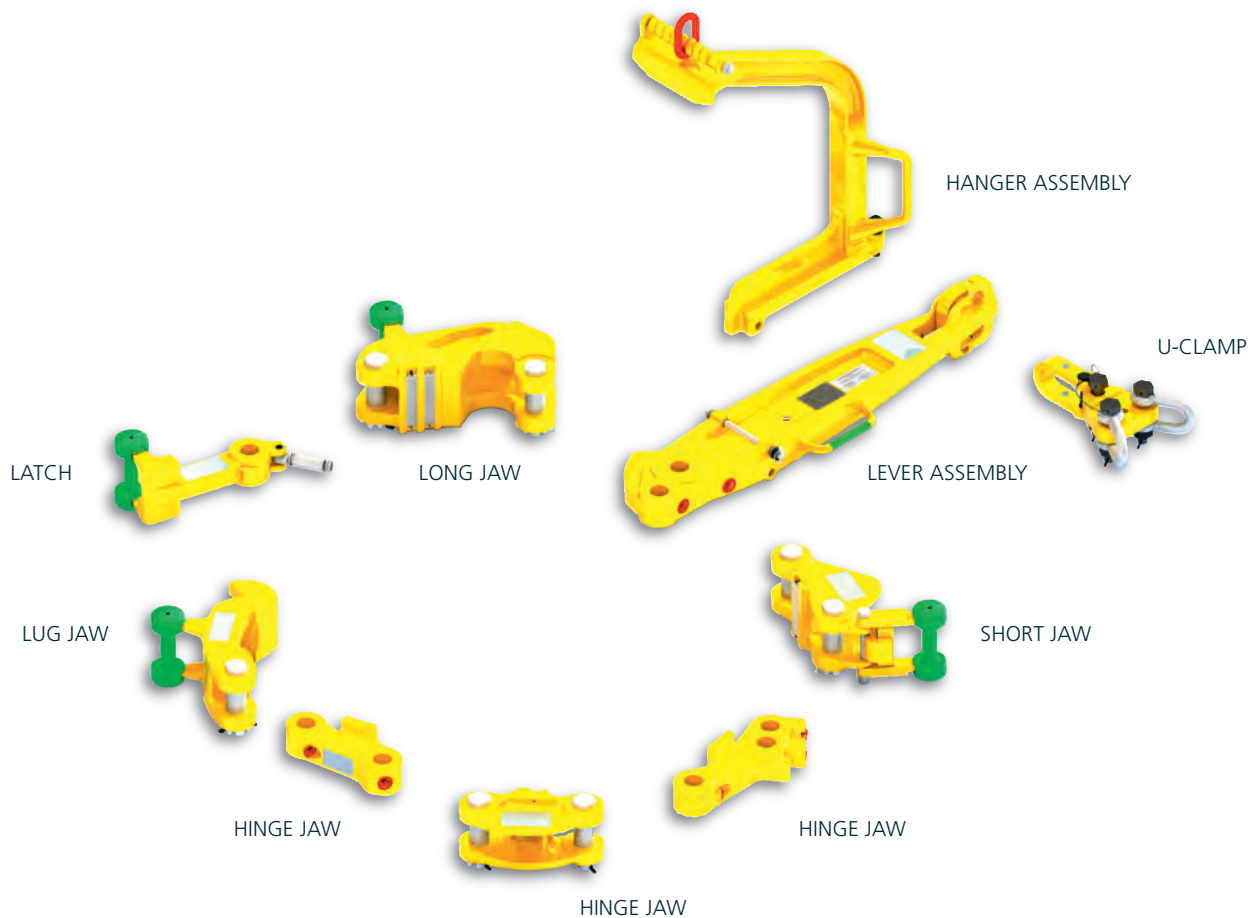


Description:

The FORUM BV Tong series is designed for making-up and breaking-out connections of tubulars, ranging from light weight Tubing/Casing to Drill Pipe and Drill Collars. The use of multiple latch steps and interchangeable Hinge and Lug Jaw Assemblies extends the range of the Tongs.

Features:

- Pipe range from 3.1/2" up to 42"
- Torque rating from 30 000 ft/lbs up to 100 000 ft/lbs
- U-Clamp optionally available



RIG FLOOR EQUIPMENT

Manual Drill Pipe & Casing Tongs

BV-65 MANUAL DRILL PIPE AND CASING TONG 3.1/2" – 21.1/2"*

Range	Description	P/N
3.1/2" – 21.1/2"	BV-65 Tong, Long Lever, Long Hanger**	70 700-S
3.1/2" – 21.1/2"	BV-65 Tong, Short Lever, Standard Hanger**	70 701-S
3.1/2" – 21.1/2"	BV-65 Tong, Long Lever, Standard Hanger**	70 702-S
3.1/2" – 21.1/2"	BV-65 Tong, Short Lever, Long Hanger**	70 703-S

HINGE & LUG JAW ASSEMBLIES

Range	Description	Torque Rating	P/N
3.1/2" – 8.1/4"	Lug Jaw Assembly	65 000 ft/lbs	70 780-S
8" – 11.1/4"	Lug Jaw Assembly	65 000 ft/lbs	70 782-S
11.3/4" – 14.3/8"	Lug Jaw Assembly	50 000 ft/lbs	70 783-S
16" – 17"	Lug Jaw Assembly	50 000 ft/lbs	70 784-S
11.3/4" – 17"	Hinge Jaw Assembly	65 000 ft/lbs	70 785
18.5/8" – 20"	Lug Jaw Assembly	50 000 ft/lbs	70 791-S
20" – 21.1/2"	Lug Jaw Assembly	50 000 ft/lbs	70 792-S
18.5/8" – 21.1/2"	Hinge Jaw Assembly	50 000 ft/lbs	70 793

BV-80 MANUAL DRILL PIPE AND CASING TONG 3.1/2" – 13.3/8"

Range	Description	P/N
3.1/2" – 13.3/8"	BV-80 Tong, Long Lever, Long Hanger**	70 100-S
3.1/2" – 13.3/8"	BV-80 Tong, Short Lever, Standard Hanger**	70 101-S

HINGE & LUG JAW ASSEMBLIES

Range	Description	Torque Rating	P/N
3.1/2" – 4.1/2"	Lug Jaw Assembly	30 000 ft/lbs	70 180-S
4" – 5.1/4"	Lug Jaw Assembly	30 000 ft/lbs	70 181-S
5" – 6"	Lug Jaw Assembly	65 000 ft/lbs	70 182-S
6" – 7"	Lug Jaw Assembly	65 000 ft/lbs	70 183-S
7" – 9"	Lug Jaw Assembly	80 000 ft/lb	70 184-S
9" – 10.3/4"	Lug Jaw Assembly	50 000 ft/lbs	70 185-S
10.3/4" – 11.3/4"	Lug Jaw Assembly	50 000 ft/lbs	70 186-S
13.3/8"	Lug Jaw Assembly	50 000 ft/lbs	70 187-S

BV-100 MANUAL DRILL PIPE AND CASING TONG 4" – 21"*

Range	Description	P/N
4" – 21"	BV-100 Tong, Long Lever, Long Hanger**	70 800-S
4" – 21"	BV-100 Tong, Long Lever, Standard Hanger**	70 801-S

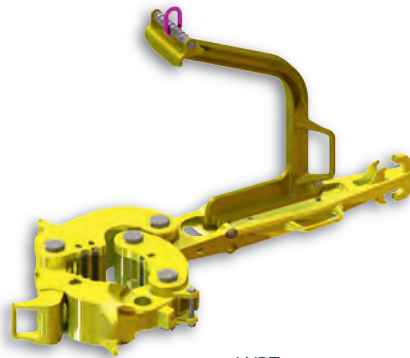
HINGE & LUG JAW ASSEMBLIES

Range	Description	Torque Rating	P/N
4" – 8.1/2"	Lug Jaw Assembly	100 000 ft/lbs	70 880-S
8.1/2" – 12"	Lug Jaw Assembly	100 000 ft/lbs	70 882-S
12" – 15"	Lug Jaw Assembly	75 000 ft/lbs	70 883-S
15.3/4"	Lug Jaw Assembly	100 000 ft/lbs	70 884-S
16" – 17"	Lug Jaw Assembly	60 000 ft/lbs	70 885-S
8.1/2" – 21"	Hinge Jaw Assembly	100 000 ft/lbs	70 886
18.5/8" – 21"	Hinge and Lug Jaw Assembly	50 000 ft/lbs	800 430-S

BV-100C CASING HEAD MANUAL TONG ASSEMBLIES

Range	Description	Torque Rating	P/N
23.4" – 24.5"	BV-100C Casing Head Tong	100 000 ft/lbs	71 810-S
25.3" – 26.3"	BV-100C Casing Head Tong	100 000 ft/lbs	71 812-S
27.4" – 28.4"	BV-100C Casing Head Tong	100 000 ft/lbs	71 814-S
29.5" – 30.6"	BV-100C Casing Head Tong	100 000 ft/lbs	71 816-S
35.5" – 36.7"	BV-100C Casing Head Tong	100 000 ft/lbs	71 822-S
37" – 42"	BV-100C Casing Head Tong	100 000 ft/lbs	71 823-S

Manual Drill Pipe & Casing Tongs



WRT

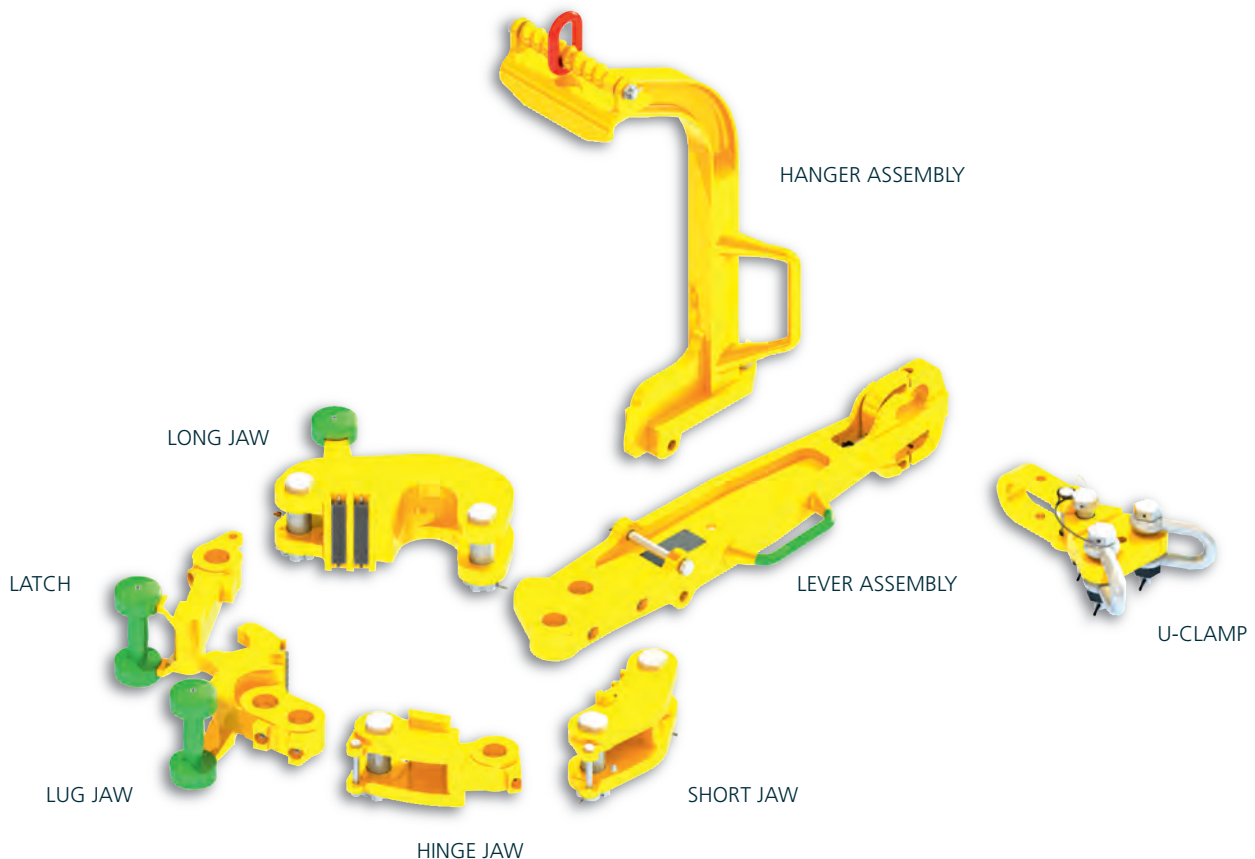


Description:

The FORUM WRT (Wide Range Tong) series is designed for making-up and breaking-out connections of tubulars, ranging from light weight Tubing/Casing to Drill Pipe and Drill Collars. The use of multiple latch steps and interchangeable Hinge and Lug Jaw Assemblies extends the range of the Tongs.

Features:

- Pipe range from 2.3/8" up to 31"
- Torque rating from 35 000 ft/lbs up to 160 000 ft/lbs
- U-Clamp optionally available
- Sophisticated tong design requires less jaws compared to all other 35 000 and 55 000 ft/lbs tongs



RIG FLOOR EQUIPMENT

Manual Drill Pipe & Casing Tongs

WRT-35 MANUAL DRILL PIPE AND CASING TONG 2.3/8" – 11"

Range	Description	P/N
2.3/8" – 11"	WRT-35 Tong, Long Lever, Standard Hanger**	800 100-S
2.3/8" – 11"	WRT-35 Tong, Short Lever, Standard Hanger**	800 101-S

HINGE & LUG JAW ASSEMBLIES

Range	Description	Torque Rating	P/N
2.3/8" – 7.5/8"	Lug Jaw Assembly	35 000 ft/lbs	800 105-S
7.5/8" – 11"	Lug Jaw Assembly	35 000 ft/lbs	800 105-S
7.5/8" – 11"	Hinge Jaw Assembly	35 000 ft/lbs	800 107

WRT-55 MANUAL DRILL PIPE AND CASING TONG 3.1/2" – 14.3/8"

Range	Description	P/N
3.1/2" – 14.3/8"	WRT-55 Tong, Long Lever, Standard Hanger**	800 200-S
3.1/2" – 14.3/8"	WRT-55 Tong, Short Lever, Standard Hanger**	800 201-S

HINGE & LUG JAW ASSEMBLIES

Range	Description	Torque Rating	P/N
3.1/2" – 8.1/4"	Lug Jaw Assembly	55 000 ft/lbs	800 210-S
8" – 11.1/2"	Lug Jaw Assembly	55 000 ft/lbs	800 220-S
11.1/2" – 14.3/8"	Lug Jaw Assembly	55 000 ft/lbs	800 230-S
11.1/2" – 14.3/8"	Hinge Jaw Assembly	55 000 ft/lbs	800 207

WRT-55C MANUAL CASING TONG 13" – 31"

Range	Description	P/N
13" – 31"	WRT-55C Tong, Long Lever, Standard Hanger**	800 240

CASING HEAD ASSEMBLIES

Range	Description	Torque Rating	P/N
13" – 14.1/2"	Casing Head Assembly	25 000 ft/lbs	800 250-S
16" – 17.1/2"	Casing Head Assembly	25 000 ft/lbs	800 255-S
17.3/4" – 18.7/8"	Casing Head Assembly	25 000 ft/lbs	800 260-S
18.1/4" – 19.5/8"	Casing Head Assembly	25 000 ft/lbs	800 265-S
19.1/2" – 21"	Casing Head Assembly	25 000 ft/lbs	800 270-S
20.3/4" – 22.1/4"	Casing Head Assembly	25 000 ft/lbs	800 275-S
24" – 25.1/2"	Casing Head Assembly	25 000 ft/lbs	800 280-S
30" – 31"	Casing Head Assembly	25 000 ft/lbs	800 290-S

WRT-160 MANUAL TONG AND LUG JAW ASSEMBLY*

Range	Description	Torque Rating	P/N
c/w Long Lever and Hanger Assy 7.1/2" – 12"	WRT-160 Manual Tong	160 000 ft/lbs	800 500-S-160

HINGE & LUG JAW ASSEMBLIES

Range	Description	Torque Rating	P/N
7.1/2" – 8.1/2" & 9.1/2" – 10.3/4"	Lug Jaw Assembly	160 000 ft/lbs	800 510-S-160
8.1/2" – 9.7/8" & 10.3/4" – 12"	Lug Jaw Assembly	160 000 ft/lbs	800 520-S-160

*Optional Available: U-Clamp II Snub Line & Pull Line saver for WRT-35, BV-55, BV-65, BV-100, WRT-160, P/N 70 616

**Annotation: Less Lug Jaw- / Hinge Jaw- / Casing Head Assemblies

RIG FLOOR EQUIPMENT

Manual Drill Pipe & Casing Tongs

TYPE C TONGS

Range	Description	P/N
2.3/8" – 7"	Type C Tong	T30117-2-ST
2.3/8" – 7"	Type C Tong, Short	T30117-3-ST
7.5/8" – 10.3/4"	Type C Tong	T30117-ST
7.5/8" – 10.3/4"	Type C Tong, Short	T30117-1-ST

HINGE & LUG JAW ASSEMBLIES

Range	Description	Torque Rating	P/N
2.3/8" – 3.668"	Lug Jaw Assembly	35 000 ft/lbs	T30728-1-SH
2.7/8" – 4.1/4"	Lug Jaw Assembly	35 000 ft/lbs	T30727-1-SH
3.1/2" – 5.1/4"	Lug Jaw Assembly	35 000 ft/lbs	T11939-4-SH
5.1/4" – 7"	Lug Jaw Assembly	35 000 ft/lbs	T11940-2-SH
7" – 8.5/8"	Lug & Hinge Jaw Assembly	30 000 ft/lbs	T11941-1-SH
7" – 8.5/8"	Lug Jaw Assembly	30 000 ft/lbs	T11941-2-SH
7" – 8.5/8"	Hinge Jaw Assembly	30 000 ft/lbs	T11942-1-SH
9.5/8" – 10.3/4"	Lug & Hinge Jaw Assembly	30 000 ft/lbs	T13799-1-SH
9.5/8" – 10.3/4"	Lug Jaw Assembly	30 000 ft/lbs	T13799-SH
9.5/8" – 10.3/4"	Hinge Jaw Assembly	30 000 ft/lbs	T13798-1-SH

TYPE B TONGS

Range	Description	P/N
3.1/2" – 13.3/8"	Type B Tong	T30114-ST
3.1/2" – 13.3/8"	Type B Tong, Short	T30114-1-ST

HINGE & LUG JAW ASSEMBLIES

Range	Description	Torque Rating	P/N
3.1/2" – 5"	Lug Jaw Assembly	55 000 ft/lbs	T11765-1-SH
4.1/4" – 6.3/4"	Lug Jaw Assembly	55 000 ft/lbs	T11196-3-SH
6.5/8" – 9"	Lug Jaw Assembly	55 000 ft/lbs	T11196-2-SH
9" – 10.3/4"	Lug Jaw Assembly	40 000 ft/lbs	T11297-1-SH
11.3/4"	Lug Jaw Assembly	40 000 ft/lbs	T13285-1-SH
13.3/8"	Lug Jaw Assembly	30 000 ft/lbs	T24592-1-SH

TYPE HT-100 TONGS

Range	Description	P/N
4" – 17"	Type HT-100 Tong	T200071-ST

HINGE & LUG JAW ASSEMBLIES

Range	Description	Torque Rating	P/N
4" – 8.1/2"	Lug Jaw Assembly	100 000 ft/lbs	T200663-1-SH
8.1/2" – 12"	Lug Jaw Assembly	100 000 ft/lbs	T200664-SH
12" – 15"	Lug Jaw Assembly	75 000 ft/lbs	T200665-SH
15.3/4"	Lug Jaw Assembly	100 000 ft/lbs	T200666-SH
16" – 17"	Lug Jaw Assembly	60 000 ft/lbs	T200667-SH
8.1/2" – 17"	Hinge Jaw Assembly	100 000 ft/lbs	T200662-1

NOTE: Hinge Jaw Assembly required for Sizes greater than 11.1/4"

TONG LINE BLOCK

Description	P/N
Tong Line Block	T24529-TLB

RIG FLOOR EQUIPMENT

Manual Drill Pipe & Casing Tongs

TYPE HT-65 TONGS

Range	Description	P/N
3.1/2" – 17"	TYPE HT-65 TONG	T200540-ST

HINGE & LUG JAW ASSEMBLIES

Range	Description	Torque Rating	P/N
3.1/2" – 8.1/4"	LUG JAW ASSEMBLY	65 000 ft/lbs	T200546-1-SH
8" – 11.1/4"	LUG JAW ASSEMBLY	65 000 ft/lbs	T200547-1-SH
11.3/4" – 14.3/8"	LUG JAW ASSEMBLY	40 000 ft/lbs	T200548-SH
16" – 17"	LUG JAW ASSEMBLY	40 000 ft/lbs	T200549-SH
11.3/4" – 17"	HINGE JAW ASSEMBLY	40 000 ft/lbs	T200545-1

NOTE: Hinge Jaw Assembly required for Sizes greater than 11.1/4"



STABBING GUIDE

Description:

FORUM Stabbing Guides allow for quicker, easier stabbing and add protection against stabbing damage.

Features:

- Available in nylon and rubber
- Quick release latch

STABBING GUIDES*

Description	Max T.J. O.D	P/N	Material	Weight
2.3/8" PH-6™ 5.95#	2.906"	02-107	Rubber	2 kg (5 lbs)
2.7/8" PH-6™ 7.90#	3.7/16"	02-109	Rubber	3 kg (6 lbs)
3.1/2" PH-6™ 12.95#	4.5/16"	02-115	Rubber	4 kg (8 lbs)
3.1/2" IF & 4" XT-39	4.7/8"	02-117-2	Rubber	5 kg (10 lbs)
4.1/2" XH	6.1/4"	02-143	Rubber	7 kg (15 lbs)
4.1/2" IF/NC50	6.5/8"	02-147	Rubber	6 kg (14 lbs)
4" XT-39	4.7/8"	02-200-N-1	Nylon	5 kg (10 lbs)
4.1/2" IF/NC50	6.5/8"	02-202-N-2	Nylon	6 kg (14 lbs)
4" XT-39	4.7/8"	02-202-N-7	Nylon	8 kg (17 lbs)
XT-57	7"	02-202-N-9	Nylon	6 kg (13 lbs)
5.1/2" XT-54	6.5/8"	02-202-N-10	Nylon	6 kg (13 lbs)
5.1/2" FH	7"	02-202-N-12	Nylon	5 kg (12 lbs)
6.5/8" FH	8.1/2"	02-203-N-1	Nylon	8 kg (18 lbs)
6.5/8" FH	8.3/4"	02-203-N-3	Nylon	8 kg (17 lbs)



CASING SCRAPER

Description:

FORUM Casing Scrapers are used to clean mud, rust, mill scale, cement, paraffin and other foreign materials from inside the casing walls. Pipe size ranges from 2.7/8" – 13.3/8" with the proper scraper blades and body.

Features:

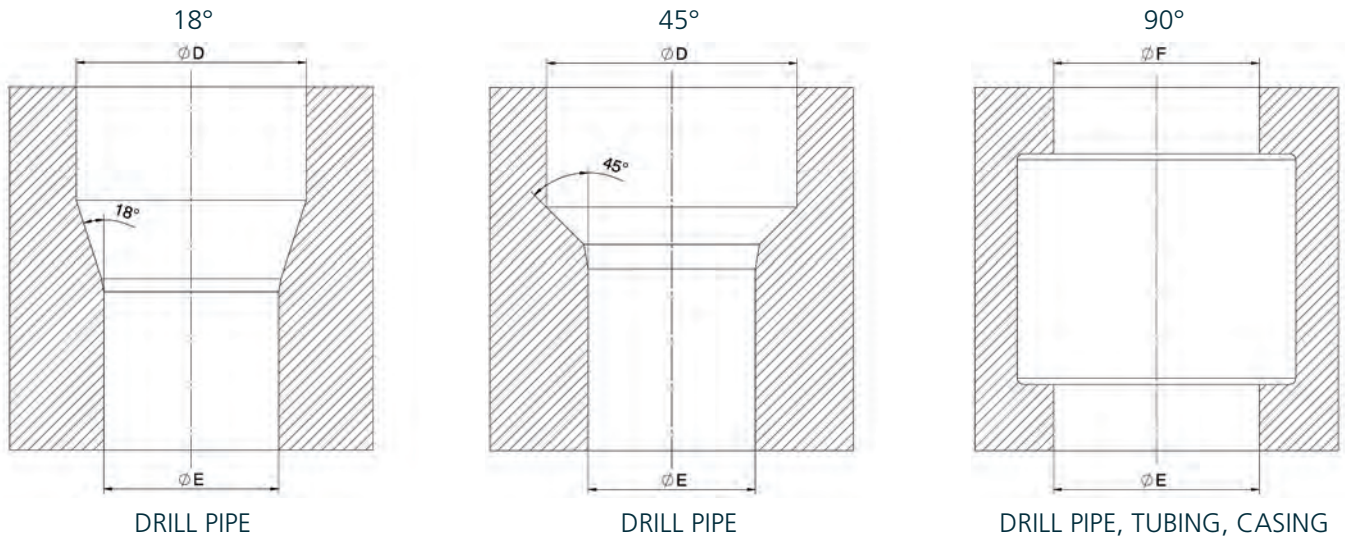
- Blades are arranged for complete 360° wall contact

CASING SCRAPERS

Casing O.D	Connection Size*	P/N	Casing Weight	Blade Diameter		Weight**
				Collapsed	Extended	
2.7/8"	1.13/16" WFJ	10-085	6.5 lbs/ft	2,347	2,597	12 kg (26 lbs)
3.1/2"	1.13/16" WFJ	10-085-1	9.3 lbs/ft	2,797	3,047	11 kg (24 lbs)
4.1/2" & 5" 23#	2.3/8" REG	10-110-1	9.5 – 13.5 lbs/ft	3,795	4,28	32 kg (70 lbs)
5"	2.3/8" REG	10-110-2	11.5 – 18 lbs/ft	4,151	4,636	33 kg (72 lbs)
5.1/2"	2.7/8" REG	10-113	13 – 23 lbs/ft	4,545	5,233	44 kg (97 lbs)
5.3/4"	2.7/8" REG	10-113-4	14 – 23 lbs/ft	4,96	5,648	44 kg (98 lbs)
6.5/8"	3.1/2" REG	10-117-3	17 – 32 lbs/ft	5,55	6,293	68 kg (150 lbs)
7"	3.1/2" REG	10-117	17 – 38 lbs/ft	5,795	6,538	69 kg (152 lbs)
7.5/8"	3.1/2" REG	10-117-1	20 – 39 lbs/ft	6,5	7,243	72 kg (158 lbs)
8.5/8"	3.1/2" REG	10-117-4	24 – 49 lbs/ft	7,386	8,129	74 kg (162 lbs)
9.5/8"	4.1/2" REG	10-123-2	29.3 – 53.3 lbs/ft	8,379	9,254	161 kg (354 lbs)
10.3/4"	4.1/2" REG	10-123-3	32.75 – 55.5 lbs/ft	9,604	10,479	163 kg (360 lbs)
11.3/4"	4.1/2" REG	10-123-5	38 – 60 lbs/ft	10,616	11,491	170 kg (375 lbs)
13.3/8"	4.1/2" REG	10-123-6	48 – 72 lbs/ft	12,191	13,066	184 kg (405 lbs)
10.3/4"	6.5/8" REG	10-127-2	32.75 – 51 lbs/ft	9,76	10,479	218 kg (480 lbs)
11.3/4"	6.5/8" REG	10-127-3	38 – 60 lbs/ft	10,616	11,491	225 kg (495 lbs)
13.3/8"	6.5/8" REG	10-127	48 – 72 lbs/ft	12,191	13,066	247 kg (545 lbs)

*Standard Connection shown, others available upon request **Weight may vary depending on Connection

Elevator Bore Codes



BORE CODES FOR 18° DRILLPIPE ELEVATOR

Size	Bore Code column 1	Bore Code column 2
2.3/8" EU	101	116
2.7/8" IU	102	117
2.7/8" EU	103	118
3.1/2" IU	104	
3.1/2" EU	105	120
4" IU	106	121
4" EU		
4.1/2" IU+IEU	107	122
4.1/2" EU		
5" IEU	109	123
5.1/2" IEU	111	124
6.906"	112	741
6.5/8" IEU		
8.1/4" TJ	113	740
6.5/8" IEU		
8.1/2" TJ	114	740
5.7/8"	115	5875
6.5/8" IEU		
max. 9.1/4"	116	
OD Tool Joint		
5.68" HWDP	117	

BORE CODES FOR 90° TUBING ELEVATOR

Size	Bore Code column 1	Bore Code column 2
1,050" P	121	150
1,050" U	122	151
1,315" P	123	152
1,315" U	124	153
1,660" P	125	154
1,660" U	126	155
1,900" P	127	156
1,900" U	128	157
2.3/8" P	129	158
2.3/8" U	130	159
2.7/8" P	131	160
2.7/8" U	132	161
3.1/2" P	133	162
3.1/2" U	134	163
4" P	135	164
4" U	136	165
4.1/2" P	137	129
4.1/2" U	138	167
5" P	139	
5" U	140	
5.1/2" P	141	
3" U	142	

BORE CODES FOR 45° DRILLPIPE ELEVATOR

Size	Bore Code column 1
6.906"	712
6.906"	713
6.5/8"	714
6.5/8" IEU	
max. 9.1/4"	715
OD Tool Joint	

BORE CODES FOR 90° DRILLPIPE ELEVATOR

Size	Bore Code column 1	Bore Code column 2
2.3/8" IU	151	109
2.3/8" EU	152	110
2.7/8" IU	153	108
2.7/8" EU	154	101
3.1/2" IU	155	102
3.1/2" EU	156	103
4" IU	157	104
4" EU		
4.1/2" IU+IEU	158	105
4.1/2" EU		
5" IEU	159	106
5.1/2" IEU	160	107
6.5/8" IEU	161	

BORE CODES FOR 90° CASING ELEVATOR

Size	Bore Code column 1	Bore Code column 2
6.5/8"	228	135
7"	229	136
7.5/8"	231	137
9.5/8"	236	141
10.3/4"	238	142
11.3/4"	239	143
12.3/4"	241	3012
13.3/8"	243	144
16"	245	145
16.3/4"	246	3014
18"	247	723
18.5/8"	248	146
20"	249	147
24.1/2"	251	149
26"	252	650
30"	253	644
24"	254	630
14"	255	690
28"	256	693
36"	257	3021
32"	258	3020
13.5/8"	259	596
22"	261	688
11.7/8"	262	3011
8.3/4"	263	
9.7/8"	265	3009
7.3/4"	269	138
13.1/2"	270	3015
42"	408	
14"	424	690

BORE CODES FOR 90° DRILL COLLAR WITH ZIP GROOVE

Size	Bore Code column 1	Bore Code column 2
4.1/8"	181	177
4.3/4"	182	435
5.3/4"	185	181
6"	186	362
6.1/4"	187	337
6.1/2"	188	362
6.3/4"	189	387
7"	190	361
7.1/4"	191	357
7.1/2"	192	188
7.3/4"	193	339
8"	194	336
8.1/2"	196	426
9"	198	427
9.1/2"	199	370
10"	202	195
9.3/4"	203	367

BORE CODES FOR 90° DRILL COLLAR WITHOUT ZIP GROOVE

Size	Bore Code column 1	Bore Code column 2
3.1/2"	272	209
4.1/8"	274	519
4.1/2"	275	215
4.3/4"	276	354
5"	277	552
5.1/4"	279	219
5.1/2"	280	411
5.3/4"	281	222
6"	282	349
6.1/4"	284	348
6.1/2"	286	
6.3/4"	287	338
7"	288	372
7.1/4"	289	335
7.1/2"	291	1370
7.3/4"	292	
8"	293	334
8.1/4"	295	347
8.1/2"	296	580
9"	297	356
9.1/2"	298	346
9.3/4"	300	
10"	301	228
11"	304	230
11.1/4"	305	
12"	307	
3.1/8"	308	206
8.3/4"	310	226

Service and technical assistance at FORUM

We at FORUM Energy Technologies treat customer service as one of our core values and understand the needs of our clients and the importance of Repair- and Maintenance Services.

We provide a highly efficient global Repair- and Maintenance Service Centers combined with a worldwide network of authorized service facilities and on-site service.

FORUM After Sales Service offerings:

- Customer-oriented service with highest quality standards
- Maintenance in accordance with to API inspection categories III and IV
- Overhaul, repair and rebuild of equipment by using FORUM parts only
- Recertification of FORUM Handling Tools including performance load test, 100% NDT and documentation, according to API 7K and API 8C
- Equipment upgrades to comply with API 7K 6th Edition requirements
- Product upgrades per latest FORUM standards
- On-site and in-house Equipment Training
- Installation and Commissioning Service
- Troubleshooting



Authorized Service Facilities



Service Locations

Canada
USA
Colombia
Scotland
Norway

Germany
Oman
Abu Dhabi
Singapore

Equipment of Locations

- Load Test Links
- Load Test Elevators
- Load Test Slips
- Load Test Tongs
- Weld Repair
- NDT
- CNC Machining
- Hydraulic Power Unit

Our goal is to become the leading provider of mission critical oilfield products and related services in terms of customer satisfaction, safety and financial performance.

Our experienced management team and employees are dedicated to solving our customers' problems. We invest in long term relationships and cooperate on product development with our clients, we consider them our partners.

OUR CORE VALUES

No one gets hurt: The safety of our employees and customers is our first priority coupled with a healthy respect for the environment.

Integrity: In everything we do, in every interaction, both internally and externally, we strive to operate with the upmost integrity and mutual respect.

Customer focused: Our products enhance our customer's performance and we listen to their needs and work with them to solve their challenges.

Good place to work: We are committed to creating a workplace that fosters innovation, teamwork and pride. Every team member is integral to our success and is treated equally and fairly.



920 Memorial City Way, Suite 800
Houston, TX 77024
281.949.2500 281.949.2554 [f]
f-e-t.com
blohmvooss-oiltools.com